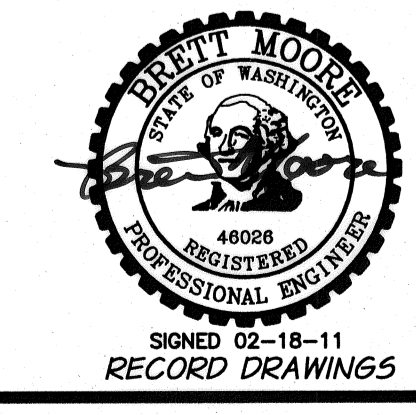
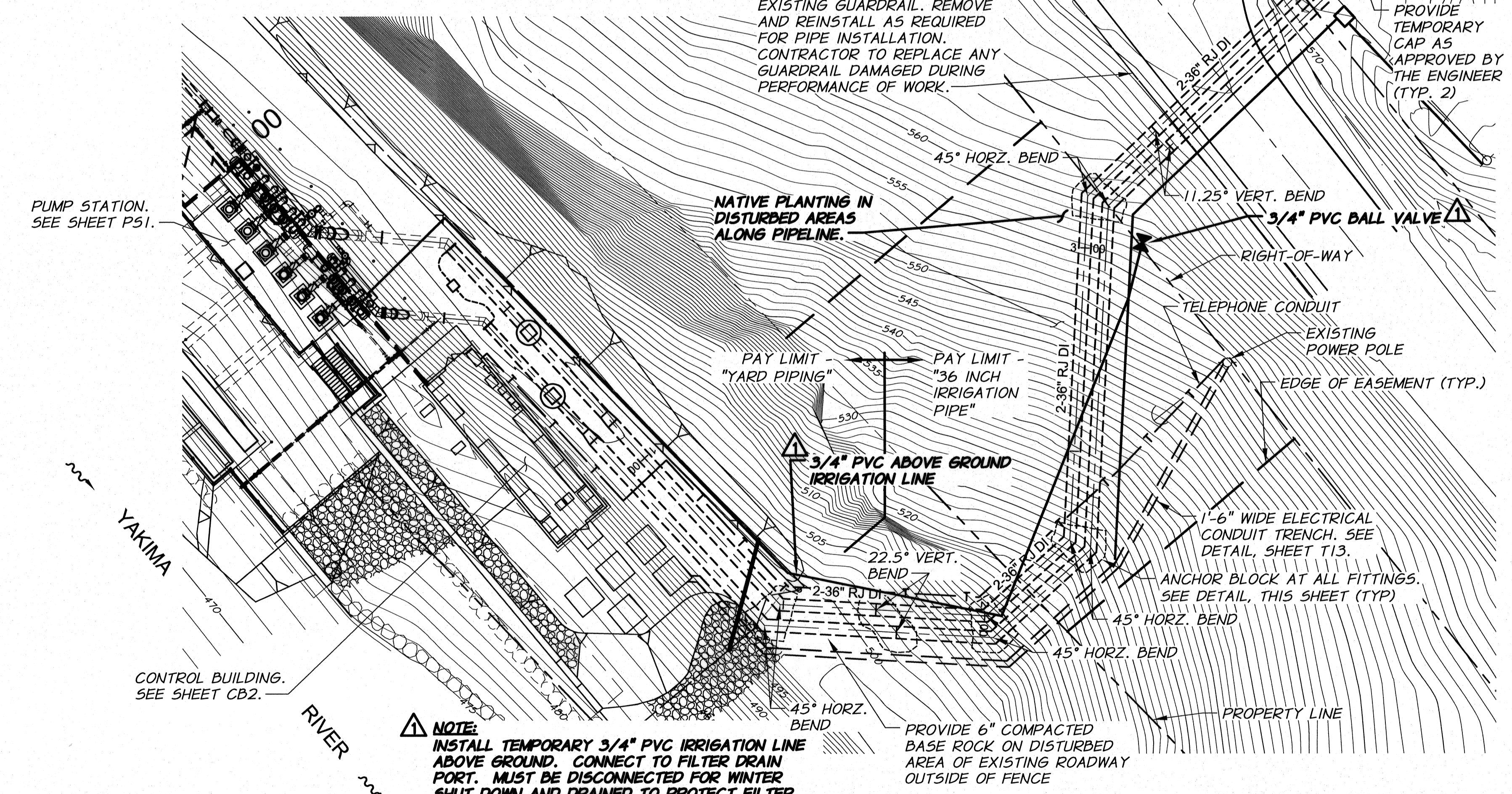
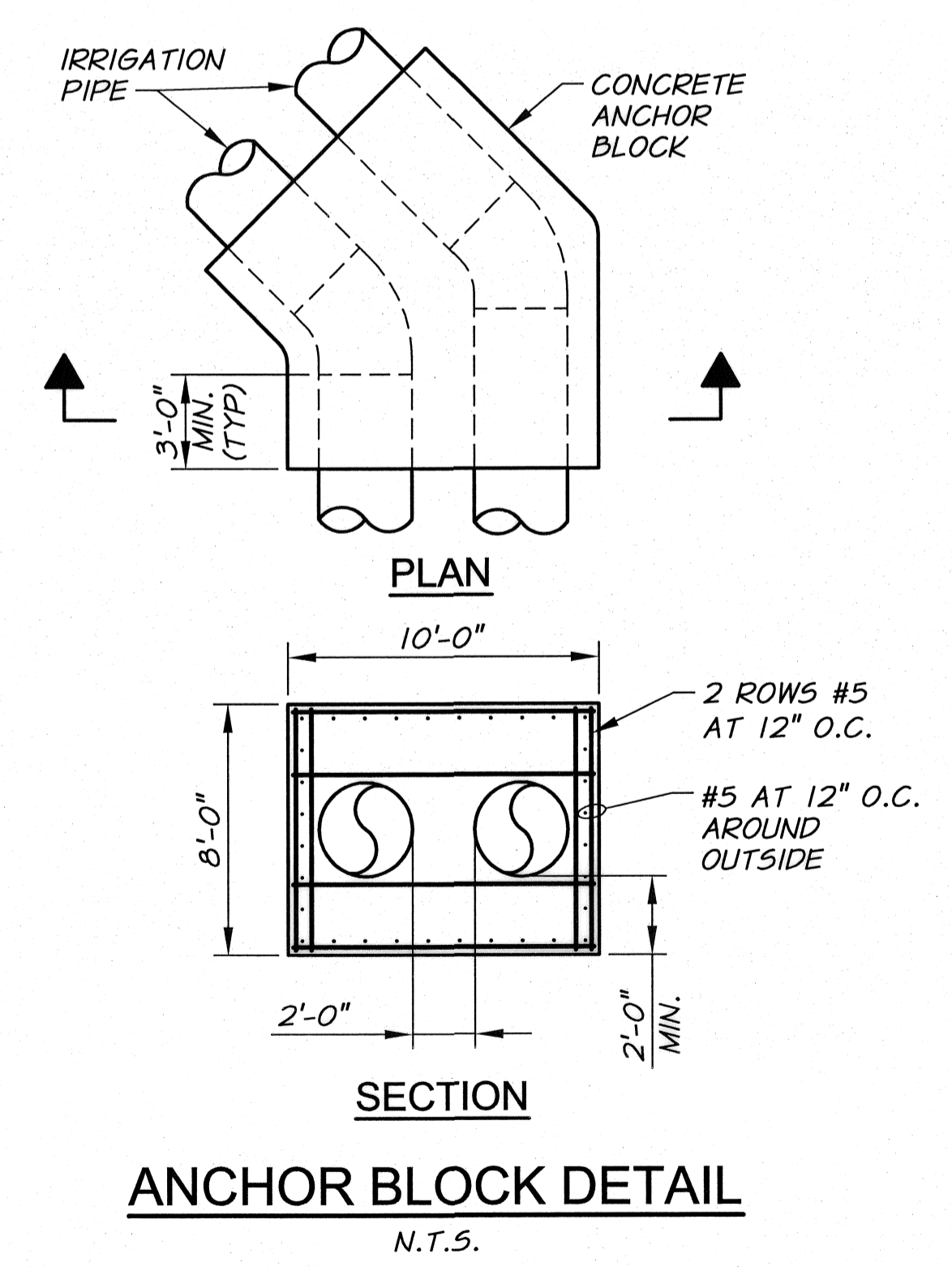


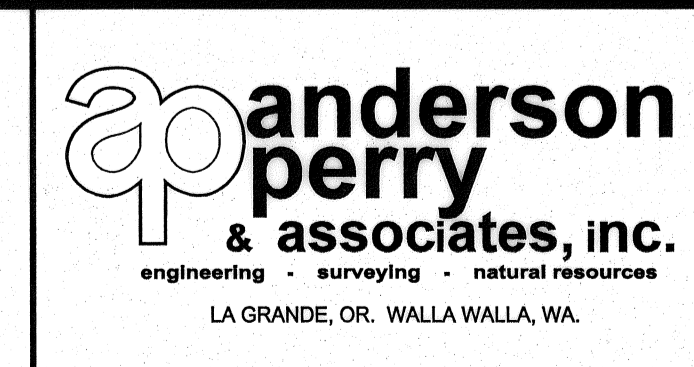
**NOTES**

- SEE SHEETS P1-P3 FOR YARD PIPING DETAILS NOT SHOWN.
- STATIONING AND PROFILE SHOWN FOR NORTHERN MOST PIPELINE. INSTALL ADJACENT PIPELINE AND FITTINGS SIMILAR TO PROFILE SHOWN AS REQUIRED.
- PROVIDE 3 FT. MINIMUM COVER OVER BOTH PIPELINES.
- ALL FITTINGS ON DI PIPING TO BE MJ WITH MEGALUG RESTRAINED JOINTS.



RECORD DRAWINGS		H.P. 11/10		SCALE IN FEET	
DESIGNED BY	B. MOORE	DATE	11/10	HORIZ. SCALE	1"=20'
DRAWN BY	D. CHRISTMAN	JOB NUMBER	1199-336	VERT. SCALE	1"=20'
REVIEWED BY	H. PERRY	DATE	2009	ACAD FILE	SitePiping.dwg
XREFS: TB-PumpSta.dwg					
COPYRIGHT 2010 BY ANDERSON-PERRY & ASSOC., INC.					

**RECORD DRAWINGS**  
These record drawings have been prepared, in part, on the basis of information compiled and furnished by others. They may contain some discrepancies and omissions, and do not necessarily represent "exact" field conditions. The Owner and the Engineer accept no responsibility for their accuracy.



**BENTON IRRIGATION DISTRICT**  
IRRIGATION SYSTEM IMPROVEMENTS  
RIVER PUMP STATION  
**PIPING**  
SOUTH MAIN LINES - PLAN AND PROFILE

SHEET  
**P4**  
18 OF 60