

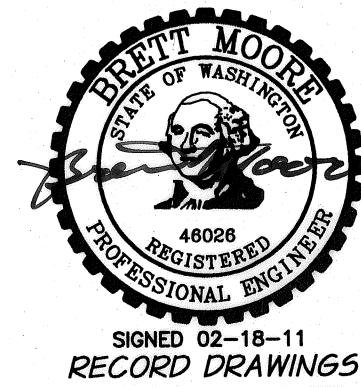
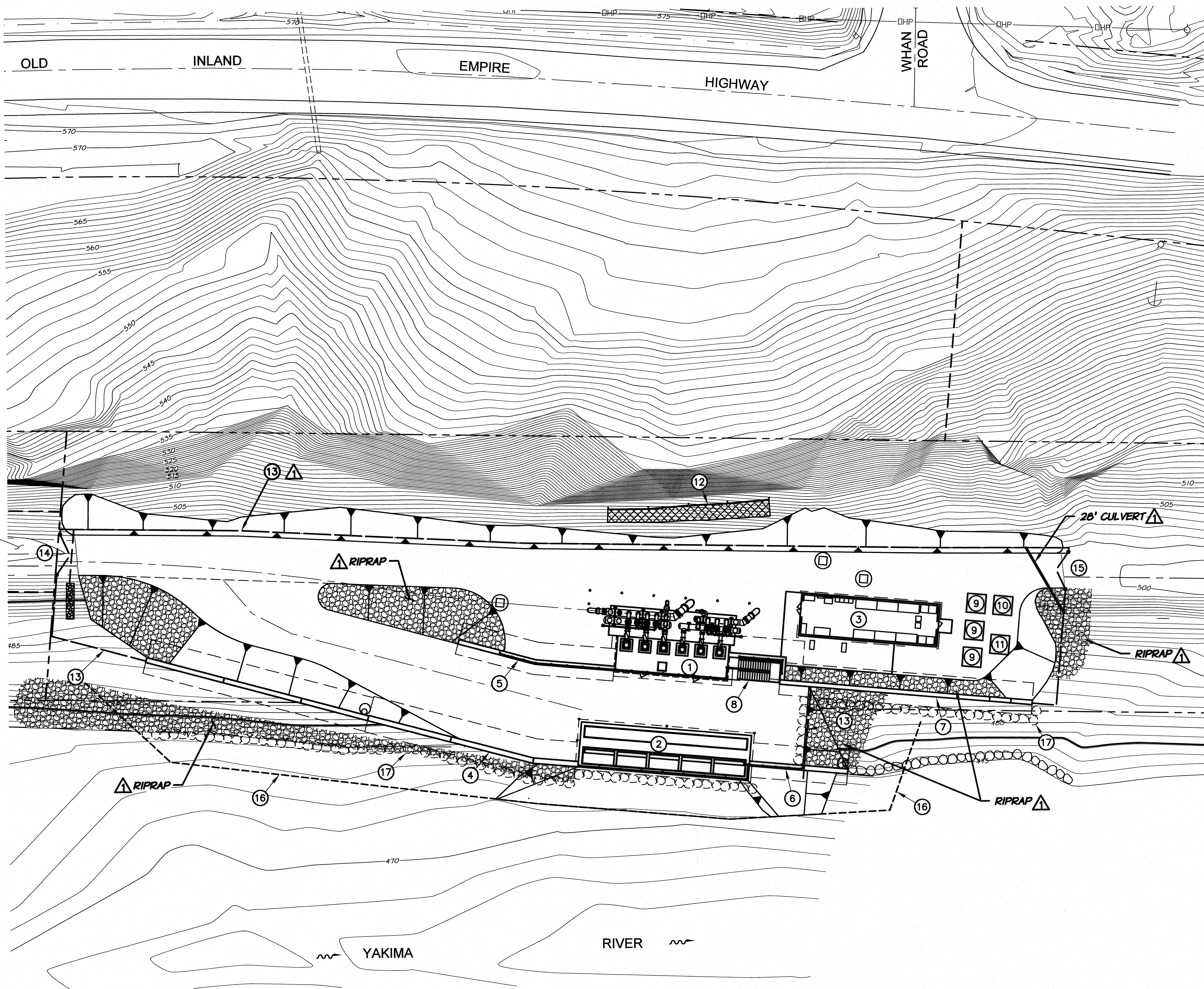
**FACILITIES AND EQUIPMENT SCHEDULE**

- ① IRRIGATION PUMP STATION. SEE SHEET P51.
- ② INTAKE STRUCTURE. SEE SHEET I51.
- ③ CONTROL BUILDING. SEE SHEET CB1.
- ④ RETAINING WALL NO. 1. SEE SHEETS 53-54.
- ⑤ RETAINING WALL NO. 2. SEE SHEET 55.
- ⑥ RETAINING WALL NO. 3. SEE SHEETS 56.
- ⑦ RETAINING WALL NO. 4. SEE SHEETS 57-58.
- ⑧ PUMP STATION/INTAKE STRUCTURE ACCESS STAIRWAY. SEE SHEET 59.
- ⑨ ELECTRICAL TRANSFORMER
- ⑩ ELECTRICAL METERING UNIT
- ⑪ ELECTRICAL JUNCTION BOX
- ⑫ ROCK FALL WOVEN PROTECTION FABRIC. SEE DETAIL, SHEET T10. PROVIDE 60 FT. WIDTH CENTERED ON ROCK FACE TO THE NORTHEAST OF THE PUMP STATION.
- ⑬ CHAINLINK FENCE. SEE DETAILS, SHEET T11.
- ⑭ DUAL 7.5 FT. SWING GATES. SEE DETAIL, SHEET T11.
- ⑮ DUAL 7 FT. SWING GATES. SEE DETAIL, SHEET T11.
- ⑯ TEMPORARY SHEETPILE COFFER DAM FOR WORK AREA ISOLATION.
- ⑰ TOE ROCK. PLACE BELOW SURFACE TO HELP CONTROL EROSION.

**NOTES**

- 1. CONSTRUCTION STAKING SHALL BE PROVIDED BY THE ENGINEER. SEE GENERAL REQUIREMENTS.
- 2. ALL WORK SHALL BE COMPLETED IN ACCORDANCE WITH REQUIREMENTS OF THE FILL/REMOVAL PERMIT AND OTHER APPLICABLE REGULATORY REQUIREMENTS.

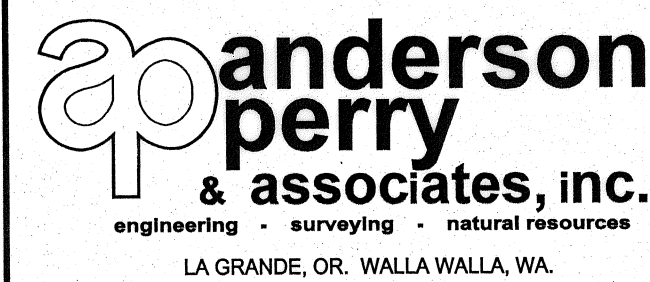
ENTRANCE ROAD.  
SEE SHEET G2 FOR  
CONTINUATION.



REVISION		BY		DATE		H.P. 11/10	
DESIGNED BY B. MOORE		XREFS: TB-PumpSta.dwg		JOB NUMBER 1199-336		DATE 2009	
DRAWN BY D. CHRISTMAN		ACAD FILE: SitePlan.dwg		HORIZ. SCALE 1"=20'		VERT. SCALE	
REVIEWED BY H. PERRY		COPYRIGHT 2010 BY ANDERSON-PERRY & ASSOC., INC.		SCALE IN FEET		0 20 40 60	

**RECORD DRAWINGS**

These record drawings have been prepared, in part, on the basis of information compiled and furnished by others. They may contain some discrepancies and omissions, and do not necessarily represent "exact" field conditions. The Owner and the Engineer accept no responsibility for their accuracy.



**BENTON IRRIGATION DISTRICT  
IRRIGATION SYSTEM IMPROVEMENTS  
RIVER PUMP STATION**

PUMP STATION SITE PLAN

SHEET

**G4**

4 OF 60

ARCHIVED