

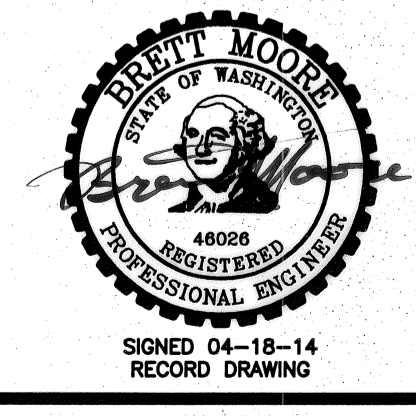
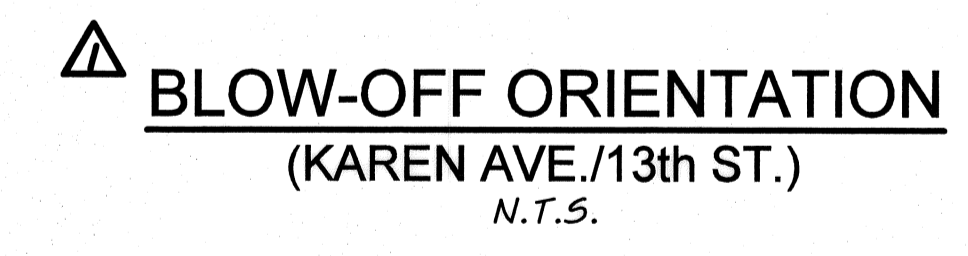
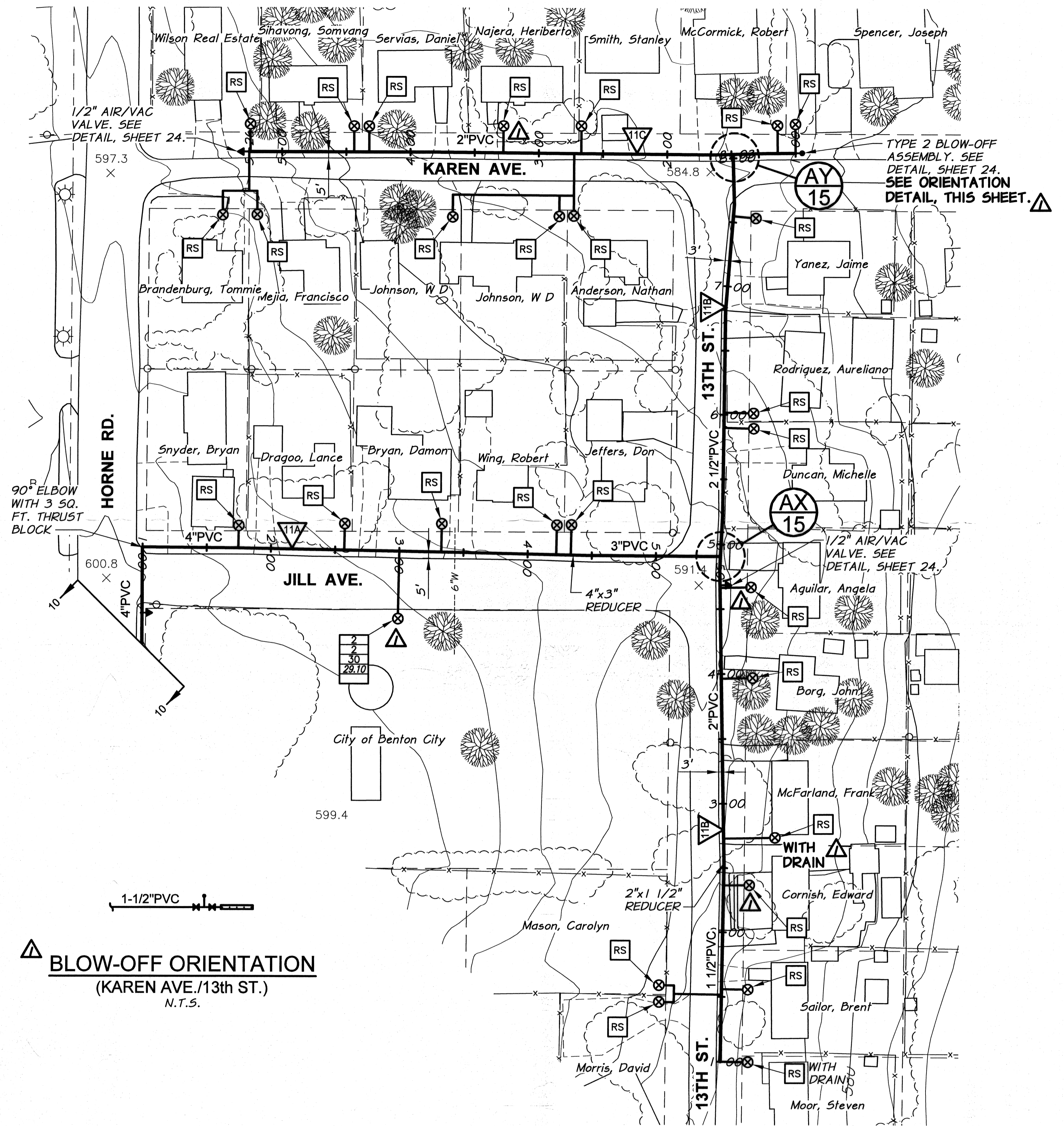
NOTES:

1. MINIMUM COVER FROM FINISH GRADE TO TOP OF PIPE SHALL BE 2.5 FEET AND 3 FEET UNDER ROADWAYS, UNLESS NOTED OTHERWISE.
2. MINIMUM SLOPE OF INSTALLED PIPING SHALL BE 0.003 FT/FT.
3. LOT LINES AND RIGHT-OF-WAYS SHOWN ARE APPROXIMATE ONLY.
4. IT IS ANTICIPATED THE TELEPHONE, POWER, CABLE T.V., WATER, AND SEWER THAT EXIST WITHIN THE STREET AND UTILITY CORRIDOR AND INDIVIDUALLY PROVIDE SERVICE TO EACH LOT WILL BE ENCOUNTERED DURING CONSTRUCTION. CONTRACTOR SHALL PLAN FOR CROSSING AND/OR EXCAVATING ALONG THESE UTILITIES AT EACH LOT AND/OR WITHIN THE STREET AND UTILITY CORRIDOR WITHOUT ADDITIONAL COMPENSATION.
5. SERVICES LOCATED DOWNHILL OF MAIN LINE ARE TO DRAIN BACK TO MAIN LINE, UNLESS DESIGNATED "WITH DRAIN".

SURFACE RESTORATION SCHEDULE		
LINE	LOCATION (STA.)	DESCRIPTION
11A JILL AVENUE	1+00 TO 1+18	GRAVEL
	1+18 TO 1+38	ASPHALT
	1+38 TO 4+28	GRAVEL
	4+28 TO 5+05	LANDSCAPE
	5+05 TO 5+50	ASPHALT
	SERVICE AT 2+28	ASPHALT, GRAVEL, AND LANDSCAPE
11B 13TH STREET	1+00 TO 1+61	LANDSCAPE
	1+61 TO 1+89	GRAVEL
	1+89 TO 2+02	CONCRETE
	2+02 TO 2+38	GRAVEL
	2+38 TO 2+69	CONCRETE
	2+69 TO 3+33	LANDSCAPE
	3+33 TO 3+46	ASPHALT
	3+46 TO 6+59	GRAVEL
	6+59 TO 6+81	ASPHALT
	6+81 TO 7+68	GRAVEL
	7+68 TO 8+00	ASPHALT
SERVICE AT 1+51	ASPHALT, GRAVEL, AND GENERAL	
11C KAREN AVENUE	1+00 TO 5+26	GRAVEL
	SERVICE CROSSINGS	ASPHALT, GRAVEL, AND LANDSCAPE

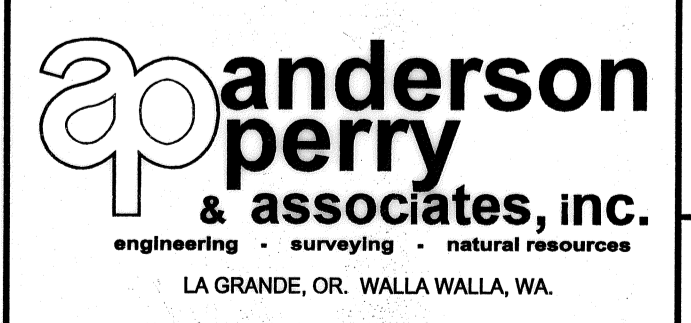
GRADE CONTROL SCHEDULE				
LINE	FROM STA.	TO STA.	CONTINUOUS SLOPE DIRECTION	
11A JILL AVENUE	1+00	5+50	DOWNWARD	
11B 11TH STREET	1+00	4+80	UPWARD	
	4+80	8+00	*DOWNWARD	
11C KAREN AVENUE	1+00	5+26	UPWARD	

*NOTE: MAINTAIN SUFFICIENT MAIN LINE DEPTH TO DRAIN EAST SIDE SERVICES BACK TO MAIN LINE.



RECORD DRAWING		B.M. 4/14		SCALE IN FEET 0 50 100 150	
DESIGNED BY H. MORRISON	DATE 2013	HORIZ. SCALE 1" = 50'	VERT. SCALE		
DRAWN BY D. CHRISTMAN	JOB NUMBER 1199-336	ACAD FILE PNP-Phase3C.dwg	DATE 2013		
REVIEWED BY B. MOORE	COPYRIGHT 2013 BY ANDERSON-PERRY & ASSOC., INC.				

RECORD DRAWINGS
APRIL 18, 2014
These record drawings have been prepared, in part, on the basis of information compiled and furnished by others. They may contain some discrepancies and omissions, and do not necessarily represent "exact" field conditions. The Owner and the Engineer accept no responsibility for their accuracy.



BENTON IRRIGATION DISTRICT
IRRIGATION SYSTEM IMPROVEMENTS
PHASE 3C
PIPING PLANS
13TH STREET, JILL AVE. AND KAREN AVE.