

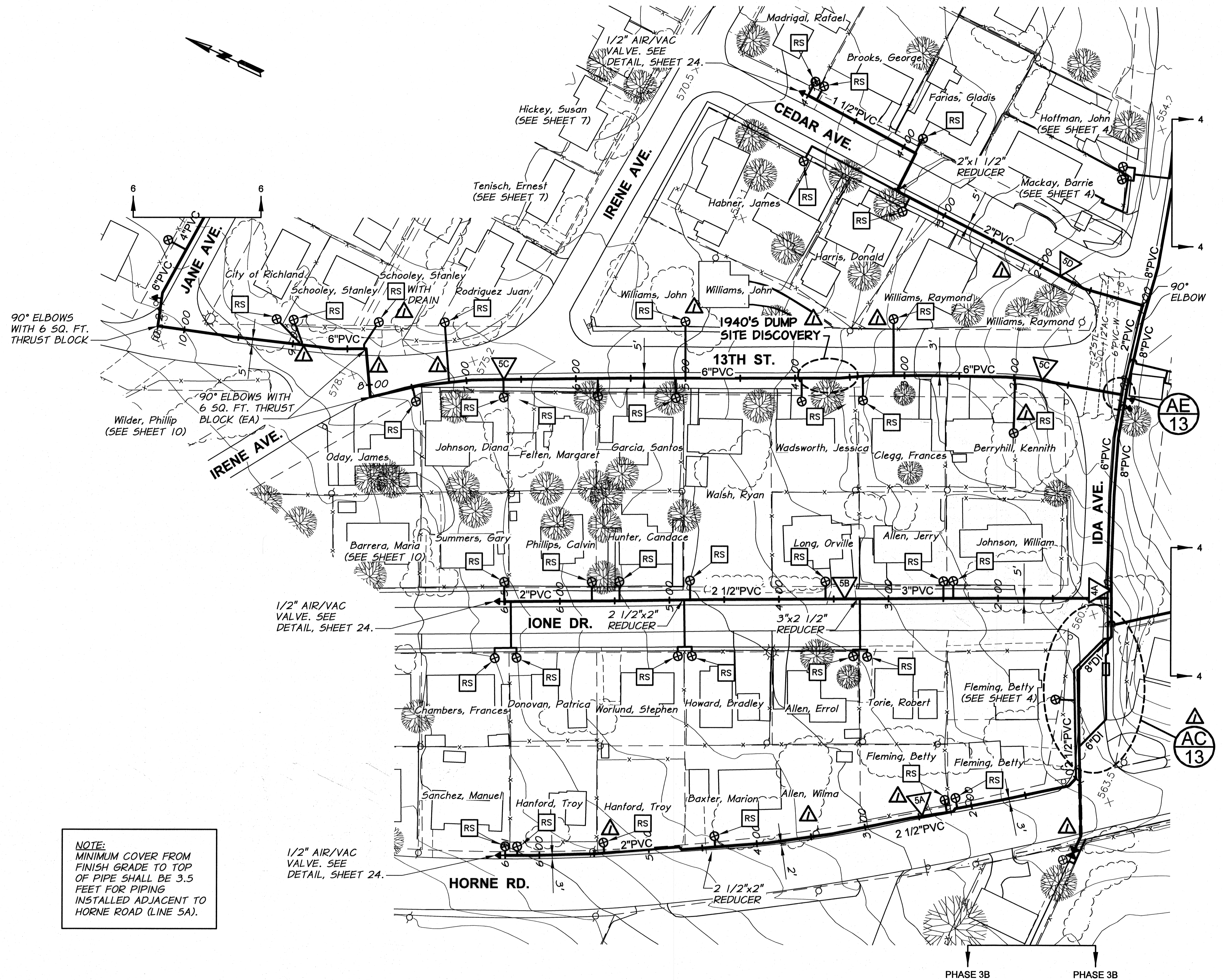
SURFACE RESTORATION SCHEDULE			
LINE	LOCATION (STA.)	DESCRIPTION	
5A	HORNE ROAD	1+00 TO 2+13	GRAVEL
		2+13 TO 4+65	ASPHALT
		4+65 TO 6+28	GRAVEL
5B	IONE DRIVE	1+00 TO 1+38	HYDROSEED
		1+38 TO 6+53	GRAVEL
	SERVICE CROSSINGS	ASPHALT, GRAVEL, AND CONCRETE	
5C	13TH STREET	1+00 TO 1+69	ASPHALT
		1+69 TO 2+40	GRAVEL
		2+40 TO 2+61	CONCRETE
		2+61 TO 7+19	GRAVEL
		7+19 TO 7+45	ASPHALT
		7+45 TO 9+58	GRAVEL
5D	CEDAR AVENUE	1+00 TO 1+59	ASPHALT
		1+59 TO 3+54	GRAVEL
		3+54 TO 3+78	ASPHALT
		3+78 TO 4+99	GRAVEL

GRADE CONTROL SCHEDULE				
LINE	FROM STA.	TO STA.	CONTINUOUS SLOPE DIRECTION	
5A	HORNE ROAD	1+00	6+28	UPWARD
5B	IONE DRIVE	1+00	6+53	UPWARD
5C	13TH STREET	1+00	10+13	UPWARD
5D	CEDAR AVENUE	1+00	4+99	UPWARD

NOTES:

- MINIMUM COVER FROM FINISH GRADE TO TOP OF PIPE SHALL BE 2.5 FEET AND 3 FEET UNDER ROADWAYS, UNLESS NOTED OTHERWISE.
- MINIMUM SLOPE OF INSTALLED PIPING SHALL BE 0.003 FT/FT.
- LOT LINES AND RIGHT-OF-WAYS SHOWN ARE APPROXIMATE ONLY.
- IT IS ANTICIPATED THE TELEPHONE, POWER, CABLE T.V., WATER, AND SEWER THAT EXIST WITHIN THE STREET AND UTILITY CORRIDOR AND INDIVIDUALLY PROVIDE SERVICE TO EACH LOT WILL BE ENCOUNTERED DURING CONSTRUCTION. CONTRACTOR SHALL PLAN FOR CROSSING AND/OR EXCAVATING ALONG THESE UTILITIES AT EACH LOT AND/OR WITHIN THE STREET AND UTILITY CORRIDOR WITHOUT ADDITIONAL COMPENSATION.
- SERVICES LOCATED DOWNHILL OF MAIN LINE ARE TO DRAIN BACK TO MAIN LINE, UNLESS DESIGNATED "WITH DRAIN".
- BID IRRIGATION LINE PARALLELS FIBER OPTIC COMMUNICATIONS LINE ALONG HORNE ROAD (LINE 5A).

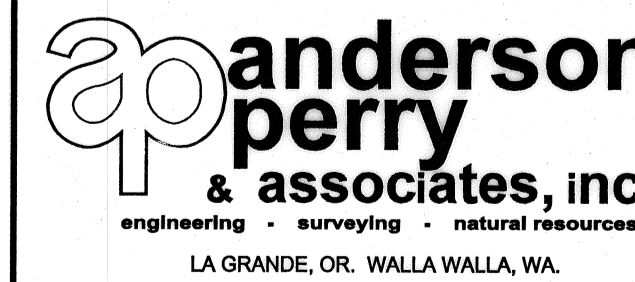
NOTE:
MINIMUM COVER FROM FINISH GRADE TO TOP OF PIPE SHALL BE 3.5 FEET FOR PIPING INSTALLED ADJACENT TO HORNE ROAD (LINE 5A).



RECORD DRAWING		B.M.	4/14	SCALE IN FEET 0 50 100 150	
DESIGNED BY	H. MORRISON	BY		HORIZ. SCALE	1" = 50'
DRAWN BY	D. CHRISTMAN	DATE	2013	VERT. SCALE	
REVIEWED BY	B. MOORE	JOB NUMBER	1199-336	ACAD FILE	PNP-Phase3C.dwg
					COPYRIGHT 2013 BY ANDERSON-PERRY & ASSOC., INC.

RECORD DRAWINGS
APRIL 18, 2014

These record drawings have been prepared, in part, on the basis of information compiled and furnished by others. They may contain some discrepancies and omissions, and do not necessarily represent "exact" field conditions. The Owner and the Engineer accept no responsibility for their accuracy.



BENTON IRRIGATION DISTRICT
IRRIGATION SYSTEM IMPROVEMENTS
PHASE 3C

PIPING PLANS
IONE DRIVE, HORNE ROAD, 13TH STREET AND CEDAR AVE.

SHEET

5