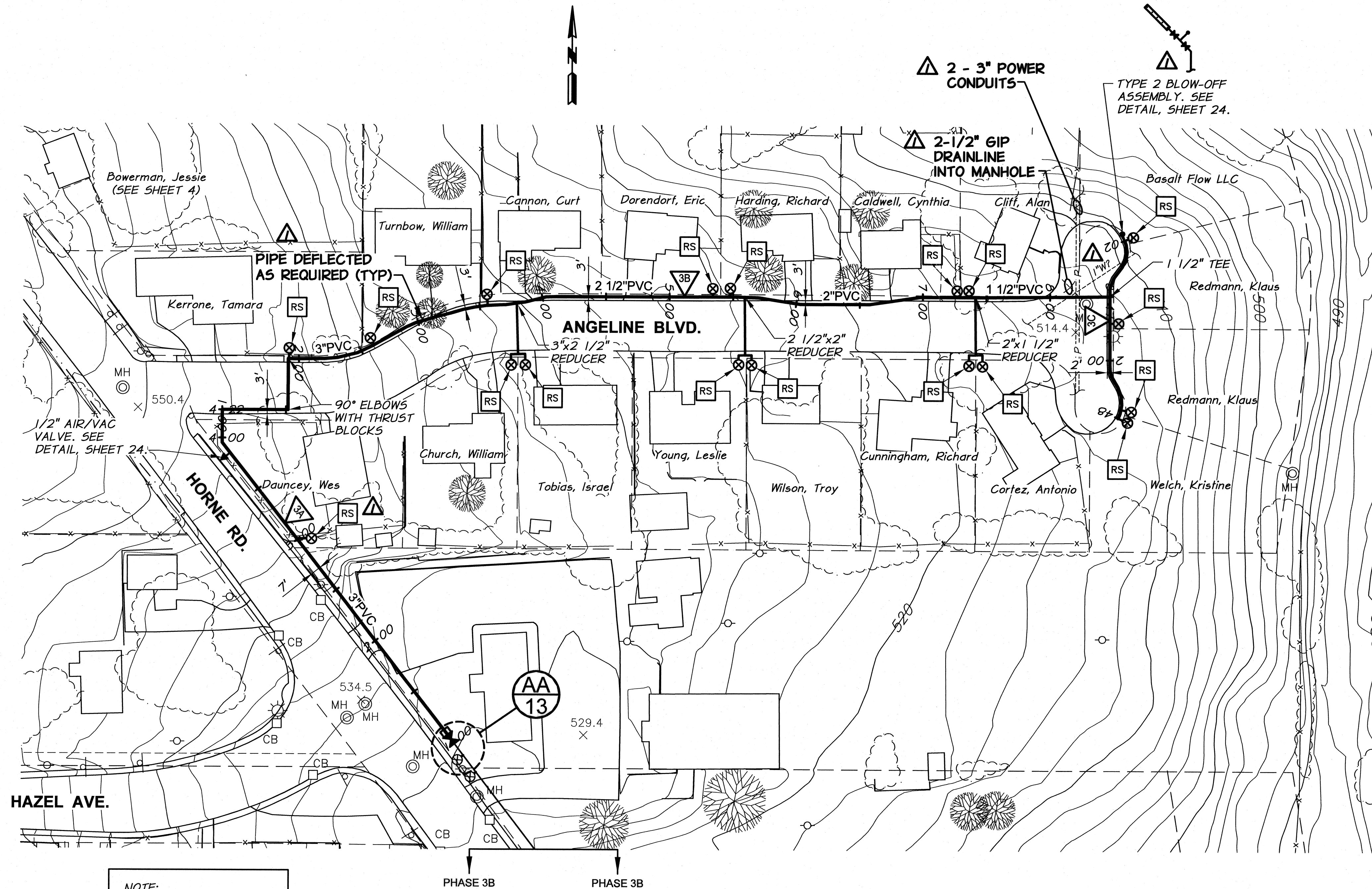


SURFACE RESTORATION SCHEDULE			
LINE	LOCATION (STA.)	DESCRIPTION	
3A	HORNE ROAD	1+00 TO 1+63	LANDSCAPE
		1+63 TO 2+20	ASPHALT/CONCRETE
		2+20 TO 2+85	LANDSCAPE
		2+85 TO 3+00	GRAVEL
		3+00 TO 4+18	LANDSCAPE
3B	ANGELINE BLVD.	4+18 TO 4+22	ASPHALT/CONCRETE
		1+00 TO 1+89	ASPHALT
		1+89 TO 2+51	GRAVEL
		2+51 TO 3+06	LANDSCAPE
		3+06 TO 4+00	ASPHALT
		4+00 TO 4+66	LANDSCAPE
		4+66 TO 4+90	CONCRETE
		4+90 TO 5+85	LANDSCAPE
		5+85 TO 6+89	ASPHALT
		6+89 TO 7+21	LANDSCAPE
3C	ANGELINE HAMMER HEAD	7+21 TO 7+34	GRAVEL
		7+34 TO 8+00	LANDSCAPE
		8+00 TO 8+55	ASPHALT

GRADE CONTROL SCHEDULE				
LINE	FROM STA.	TO STA.	CONTINUOUS SLOPE DIRECTION	
3A	HORNE ROAD	1+00	3+86	UPWARD
3B	ANGELINE BLVD.	1+00	8+55	DOWNWARD
3C	ANGELINE HAMMER HEAD	1+02	2+48	UPWARD

NOTES:

- MINIMUM COVER FROM FINISH GRADE TO TOP OF PIPE SHALL BE 2.5 FEET AND 3 FEET UNDER ROADWAYS, UNLESS NOTED OTHERWISE.
- MINIMUM SLOPE OF INSTALLED PIPING SHALL BE 0.003 FT/FT.
- LOT LINES AND RIGHT-OF-WAYS SHOWN ARE APPROXIMATE ONLY.
- IT IS ANTICIPATED THE TELEPHONE, POWER, CABLE T.V., WATER, AND SEWER THAT EXIST WITHIN THE STREET AND UTILITY CORRIDOR AND INDIVIDUALLY PROVIDE SERVICE TO EACH LOT WILL BE ENCOUNTERED DURING CONSTRUCTION. CONTRACTOR SHALL PLAN FOR CROSSING AND/OR EXCAVATING ALONG THESE UTILITIES AT EACH LOT AND/OR WITHIN THE STREET AND UTILITY CORRIDOR WITHOUT ADDITIONAL COMPENSATION.
- SERVICES LOCATED DOWNHILL OF MAIN LINE ARE TO DRAIN BACK TO MAIN LINE, UNLESS DESIGNATED "WITH DRAIN".



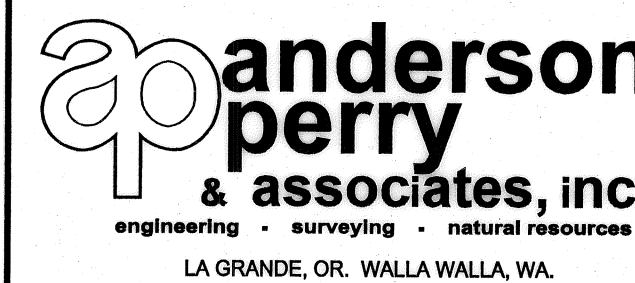
NOTE:
MINIMUM COVER FROM FINISH GRADE TO TOP OF PIPE SHALL BE 3.5 FEET FOR PIPING INSTALLED ADJACENT TO HORNE ROAD (LINE 3A).



RECORD DRAWING		BY	B.M.	DATE	4/14
DESIGNED BY	H. MORRISON	HORZ. SCALE	1"=50'	VERT. SCALE	
DRAWN BY	D. CHRISTMAN	JOB NUMBER	1199-336	DATE	2013
REVIEWED BY	B. MOORE	ACAD FILE:	PNP-Phase3C.dwg		
COPYRIGHT 2013 BY ANDERSON-PERRY & ASSOC., INC.					

RECORD DRAWINGS
APRIL 18, 2014

These record drawings have been prepared, in part, on the basis of information compiled and furnished by others. They may contain some discrepancies and omissions, and do not necessarily represent "exact" field conditions. The Owner and the Engineer accept no responsibility for their accuracy.



BENTON IRRIGATION DISTRICT
IRRIGATION SYSTEM IMPROVEMENTS
PHASE 3C

PIPING PLANS
HORNE ROAD AND ANGELINE BOULEVARD

SHEET

3