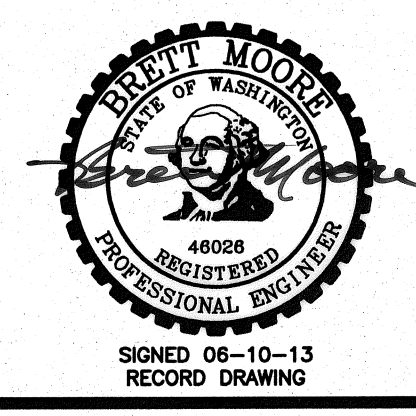


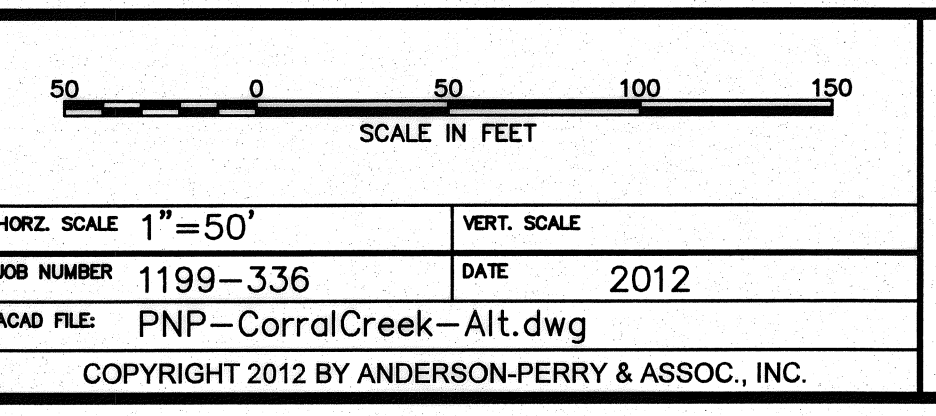
- NOTES:**
1. MINIMUM COVER FROM FINISH GRADE TO TOP OF PIPE SHALL BE 2.5 FEET.
 2. MINIMUM SLOPE OF INSTALLED PIPING SHALL BE 0.003 FT/FT.
 3. LOT LINES AND RIGHT-OF-WAYS SHOWN ARE APPROXIMATE ONLY.
 4. IT IS ANTICIPATED THE TELEPHONE, POWER, CABLE T.V., WATER, AND SEWER THAT EXIST WITHIN THE STREET AND UTILITY CORRIDOR AND INDIVIDUALLY PROVIDE SERVICE TO EACH LOT WILL BE ENCOUNTERED DURING CONSTRUCTION. CONTRACTOR SHALL PLAN FOR CROSSING AND/OR EXCAVATING ALONG THESE UTILITIES AT EACH LOT AND/OR WITHIN THE STREET AND UTILITY CORRIDOR WITHOUT ADDITIONAL COMPENSATION.
 5. SERVICES LOCATED DOWNHILL OF MAIN LINE ARE TO DRAIN BACK TO MAIN LINE, UNLESS DESIGNATED "WITH DRAIN".

SURFACE RESTORATION SCHEDULE		
LINE	LOCATION (STA.)	DESCRIPTION
14TH STREET	1+00 TO 1+30	HYDROSEED AND GRAVEL
	1+30 TO 9+44	HYDROSEED
ROAD/SERVICE CROSSINGS		ASPHALT/CONCRETE AND HYDROSEED
CORRAL CK. ROAD	1+00 TO 5+11	HYDROSEED AND GRAVEL
NEPTUNE AVENUE	2+00 TO 3+51	HYDROSEED
13TH STREET	1+00 TO 1+61	ASPHALT/CONCRETE
	1+61 TO 8+81	ASPHALT/CONCRETE AND GENERAL
ROAD/SERVICE CROSSINGS		ASPHALT/CONCRETE AND HYDROSEED

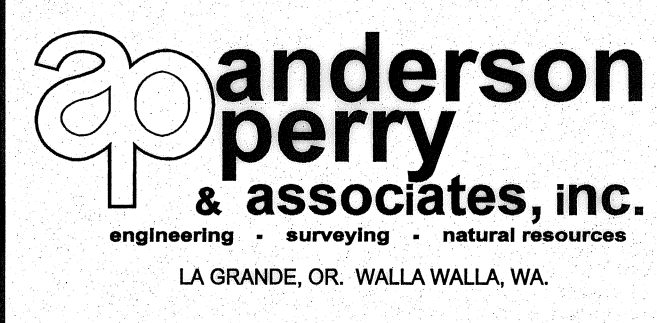
GRADE CONTROL SCHEDULE			
LINE	FROM STA.	TO STA.	CONTINUOUS SLOPE DIRECTION
14TH STREET	1+00	9+44	DOWNWARD
CORRAL CK. ROAD	1+00	5+11	DOWNWARD
NEPTUNE AVENUE	2+00	3+51	UPWARD
13TH STREET	1+00	3+50	DOWNWARD
	3+50	8+81	UPWARD



RECORD DRAWING		B.M.	5/13
DESIGNED BY	M. OWENS	DATE	5/13
DRAWN BY	D. CHRISTMAN	JOB NUMBER	1199-336
REVIEWED BY	B. MOORE	ACAD FILE	PNP-CorralCreek-Alt.dwg
		DATE	2012
COPYRIGHT 2012 BY ANDERSON-PERRY & ASSOC., INC.			



RECORD DRAWINGS
JUNE 10, 2013
These record drawings have been prepared, in part, on the basis of information compiled and furnished by others. They may contain some discrepancies and omissions, and do not necessarily represent "exact" field conditions. The Owner and the Engineer accept no responsibility for their accuracy.



BENTON IRRIGATION DISTRICT
IRRIGATION SYSTEM IMPROVEMENTS
PHASE 3B
ALTERNATIVE BID
WESTBOURNE RIDGE

SHEET
A28