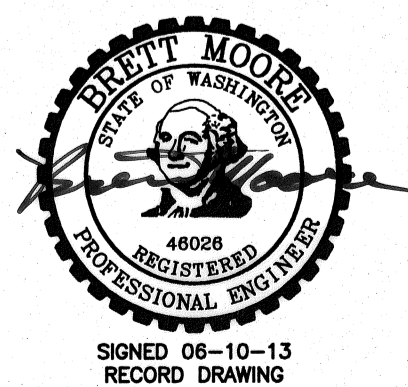
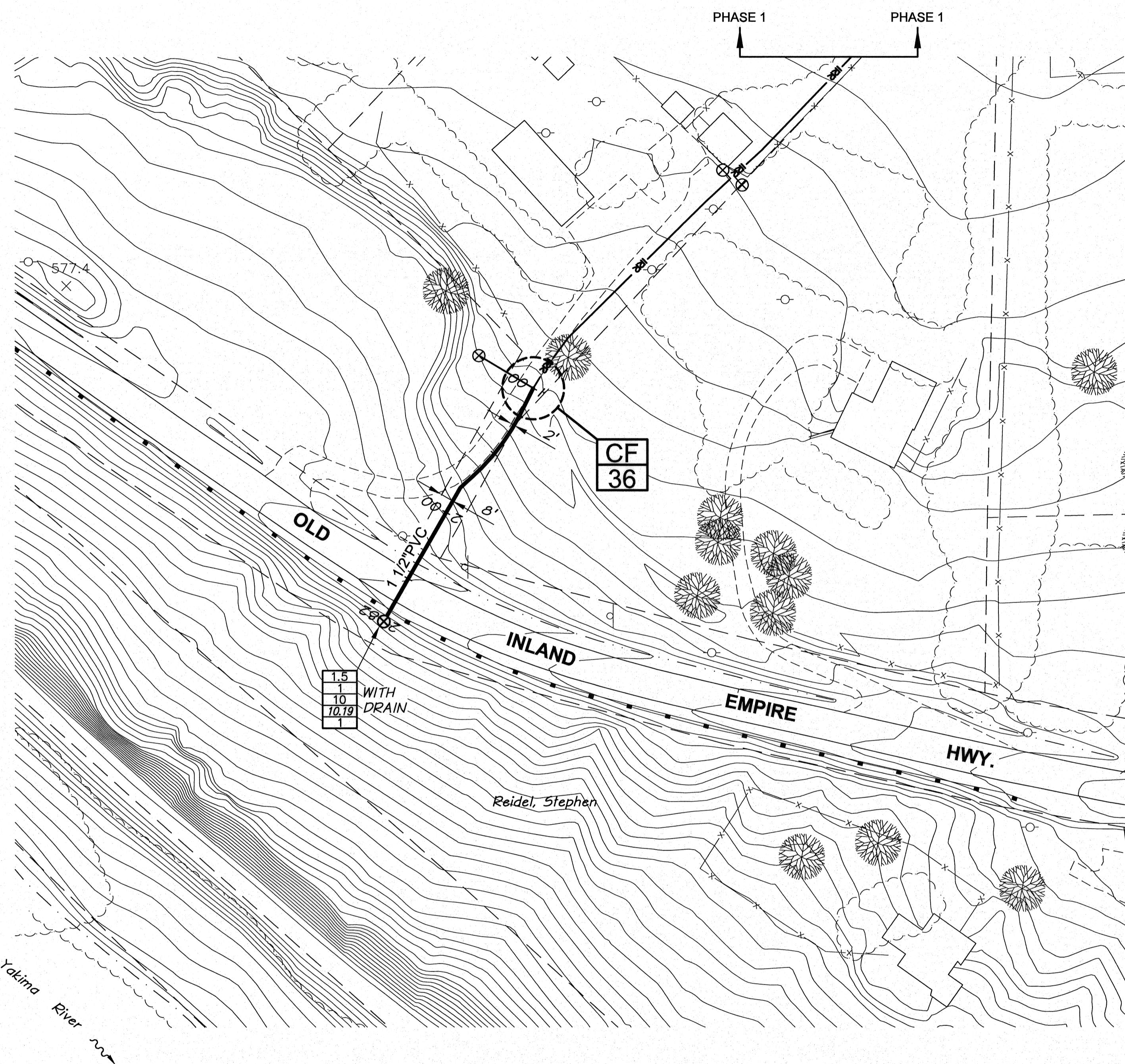




SURFACE RESTORATION SCHEDULE		
LINE	LOCATION (STA.)	DESCRIPTION
	1+00 TO 2+42	HYDROSEED
	2+42 TO 2+71	ASPHALT/CONCRETE AND GRAVEL
	2+71 TO 2+82	HYDROSEED

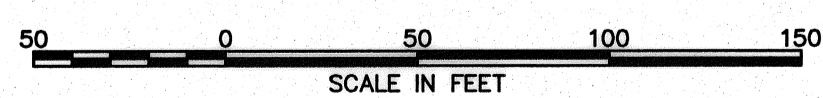
GRADE CONTROL SCHEDULE			
LINE	FROM STA.	TO STA.	CONTINUOUS SLOPE DIRECTION
	1+00	2+82	DOWNWARD

- NOTES:**
1. MINIMUM COVER FROM FINISH GRADE TO TOP OF PIPE SHALL BE 2.5 FEET.
 2. MINIMUM SLOPE OF INSTALLED PIPING SHALL BE 0.003 FT/FT.
 3. LOT LINES AND RIGHT-OF-WAYS SHOWN ARE APPROXIMATE ONLY.



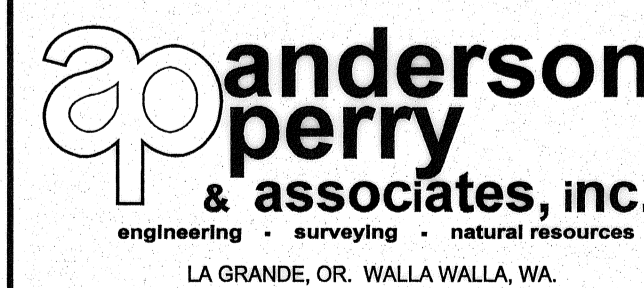
SIGNED 06-10-13
RECORD DRAWING

REVISION	BY	DATE	HORIZ. SCALE 1"=50'	VERT. SCALE
DESIGNED BY M. OWENS			JOB NUMBER 1199-336	DATE 2012
DRAWN BY D. CHRISTMAN			ACAD FILE: PNP-OIEHighway-PH3B.dwg	
REVIEWED BY B. MOORE			COPYRIGHT 2012 BY ANDERSON-PERRY & ASSOC., INC.	



RECORD DRAWINGS
JUNE 10, 2013

These record drawings have been prepared, in part, on the basis of information compiled and furnished by others. They may contain some discrepancies and omissions, and do not necessarily represent "exact" field conditions. The Owner and the Engineer accept no responsibility for their accuracy.



BENTON IRRIGATION DISTRICT
IRRIGATION SYSTEM IMPROVEMENTS
PHASE 3B

O.I.E. HIGHWAY - ADDITIONAL SERVICE

SHEET

31