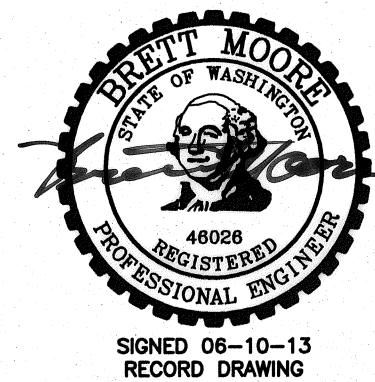
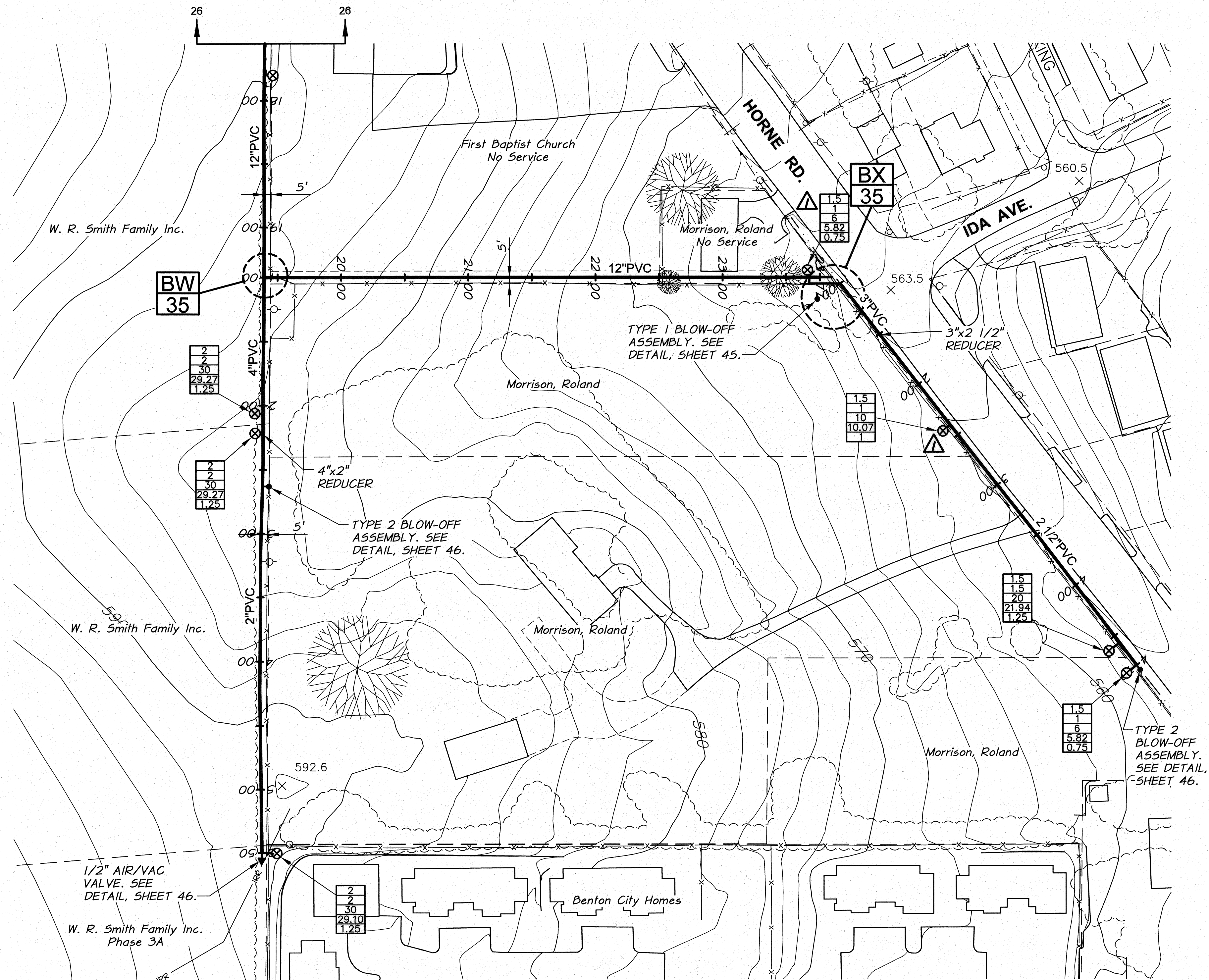


SURFACE RESTORATION SCHEDULE		
LINE	LOCATION (STA.)	DESCRIPTION
HIGHLAND TO HORNE	18+00 TO 24+00	HYDROSEED
HORNE ROAD	1+00 TO 3+13	HYDROSEED
	3+13 TO 3+31	GRAVEL
	3+31 TO 4+63	HYDROSEED
BRANCH SOUTH	1+00 TO 5+37	HYDROSEED

GRADE CONTROL SCHEDULE			
LINE	FROM STA.	TO STA.	CONTINUOUS SLOPE DIRECTION
HIGHLAND TO HORNE	18+00	24+00	DOWNWARD
HORNE ROAD	1+00	4+63	DOWNWARD
BRANCH SOUTH	1+00	2+50	DOWNWARD
	2+50	5+37	UPWARD

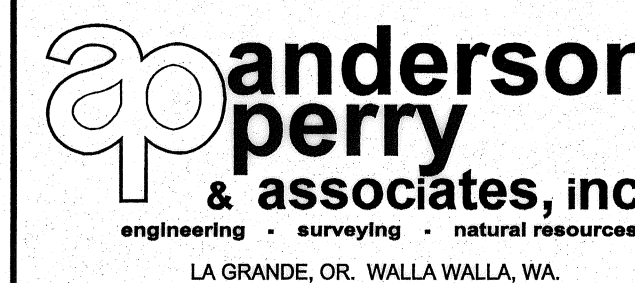
- NOTES:**
- MINIMUM COVER FROM FINISH GRADE TO TOP OF PIPE SHALL BE 2.5 FEET.
 - MINIMUM SLOPE OF INSTALLED PIPING SHALL BE 0.003 FT/FT.
 - LOT LINES AND RIGHT-OF-WAYS SHOWN ARE APPROXIMATE ONLY.
 - IT IS ANTICIPATED THE TELEPHONE, POWER, CABLE T.V., WATER, AND SEWER THAT EXIST WITHIN THE STREET AND UTILITY CORRIDOR AND INDIVIDUALLY PROVIDE SERVICE TO EACH LOT WILL BE ENCOUNTERED DURING CONSTRUCTION. CONTRACTOR SHALL PLAN FOR CROSSING AND/OR EXCAVATING ALONG THESE UTILITIES AT EACH LOT AND/OR WITHIN THE STREET AND UTILITY CORRIDOR WITHOUT ADDITIONAL COMPENSATION.
 - SERVICES LOCATED DOWNHILL OF MAIN LINE ARE TO DRAIN BACK TO MAIN LINE, UNLESS DESIGNATED "WITH DRAIN".



RECORD DRAWING		B.M. 5/13		SCALE IN FEET 0 50 100 150	
DESIGNED BY	M. OWENS	HORIZ. SCALE	1"=50'	VERT. SCALE	
DRAWN BY	D. CHRISTMAN	JOB NUMBER	1199-336	DATE	2012
REVIEWED BY	B. MOORE	ACAD FILE	PNP-Highland2Horne.dwg		
COPYRIGHT 2012 BY ANDERSON-PERRY & ASSOC., INC.					

RECORD DRAWINGS
JUNE 10, 2013

These record drawings have been prepared, in part, on the basis of information compiled and furnished by others. They may contain some discrepancies and omissions, and do not necessarily represent "exact" field conditions. The Owner and the Engineer accept no responsibility for their accuracy.



BENTON IRRIGATION DISTRICT
IRRIGATION SYSTEM IMPROVEMENTS
PHASE 3B

HIGHLAND RD. TO HORNE RD. PIPING II

SHEET

27

ARCHIVED