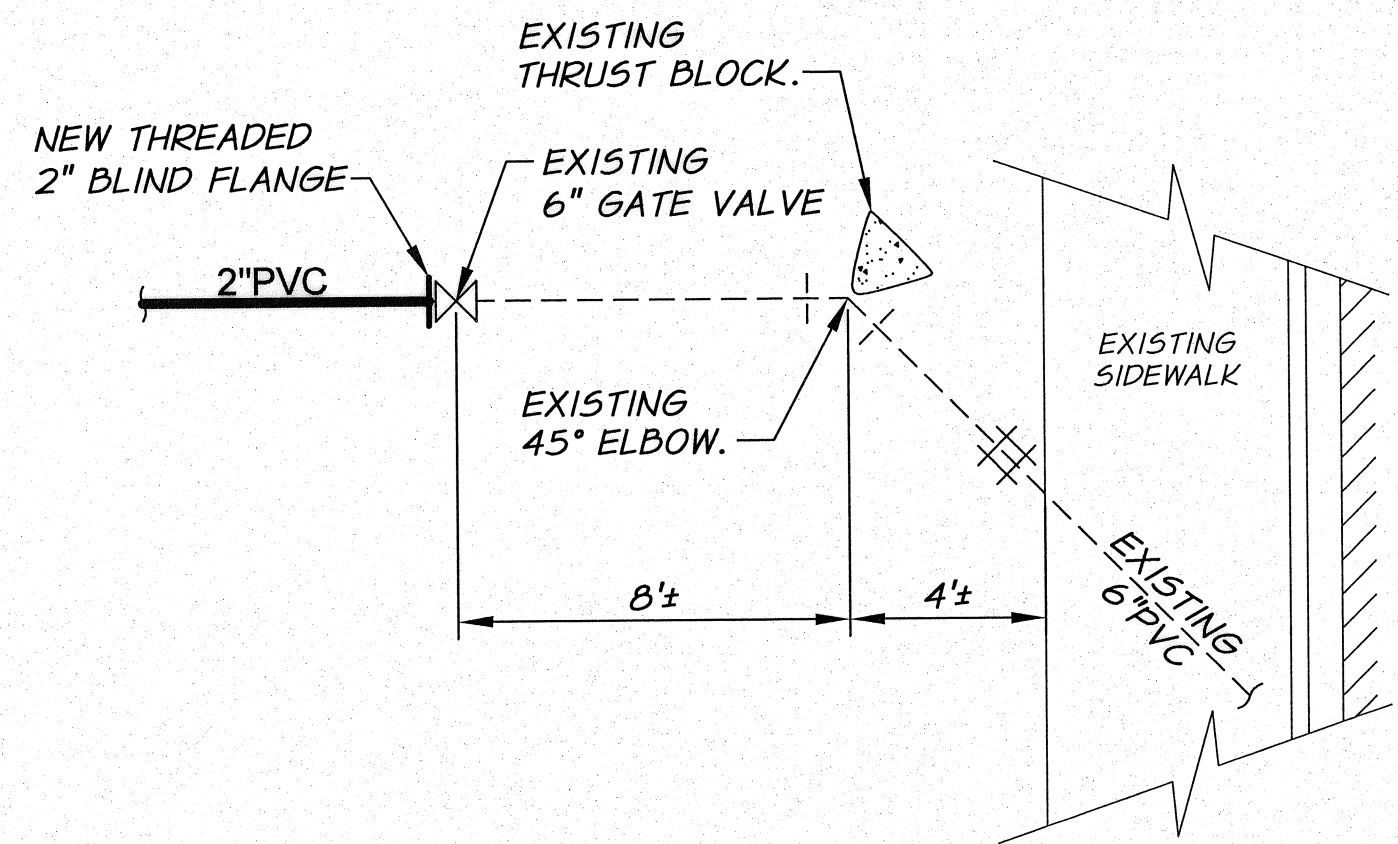
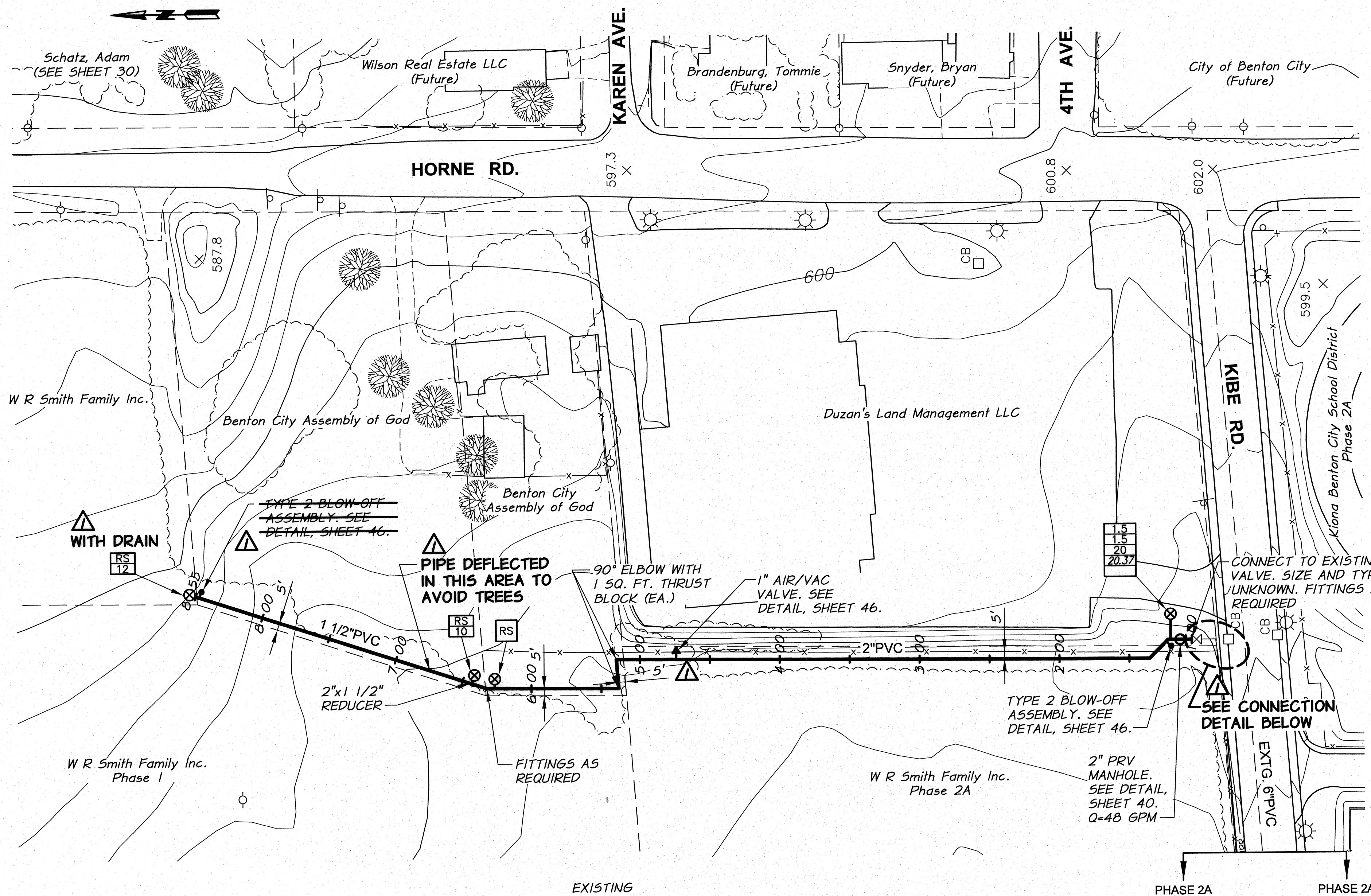


SURFACE RESTORATION SCHEDULE		
LINE	LOCATION (STA.)	DESCRIPTION
KIBE NORTH	1+00 TO 1+29	LANDSCAPE
	1+29 TO 5+15	HYDROSEED
	5+15 TO 8+55	HYDROSEED AND GRAVEL

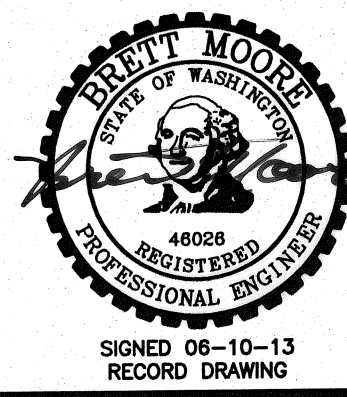
GRADE CONTROL SCHEDULE			
LINE	FROM STA.	TO STA.	CONTINUOUS SLOPE DIRECTION
KIBE NORTH	1+00	3+70	UPWARD
	3+70	8+55	DOWNWARD

NOTES:

- MINIMUM COVER FROM FINISH GRADE TO TOP OF PIPE SHALL BE 2.5 FEET.
- MINIMUM SLOPE OF INSTALLED PIPING SHALL BE 0.003 FT/FT.
- LOT LINES AND RIGHT-OF-WAYS SHOWN ARE APPROXIMATE ONLY.
- IT IS ANTICIPATED THE TELEPHONE, POWER, CABLE T.V., WATER, AND SEWER THAT EXIST WITHIN THE STREET AND UTILITY CORRIDOR AND INDIVIDUALLY PROVIDE SERVICE TO EACH LOT WILL BE ENCOUNTERED DURING CONSTRUCTION. CONTRACTOR SHALL PLAN FOR CROSSING AND/OR EXCAVATING ALONG THESE UTILITIES AT EACH LOT AND/OR WITHIN THE STREET AND UTILITY CORRIDOR WITHOUT ADDITIONAL COMPENSATION.
- SERVICES LOCATED DOWNHILL OF MAIN LINE ARE TO DRAIN BACK TO MAIN LINE, UNLESS DESIGNATED "WITH DRAIN".



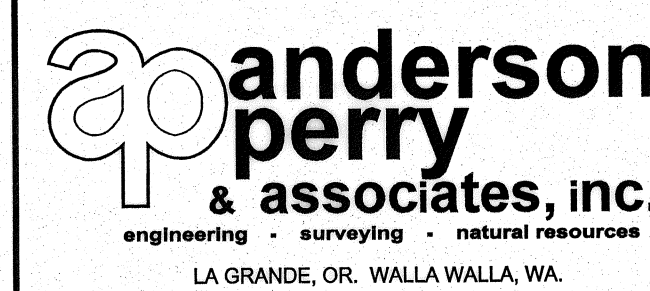
CONNECTION DETAIL
EXISTING PIPING
N.T.S.



RECORD DRAWING		B.M.	5/13	SCALE IN FEET	
REVISION	BY	DATE	HORIZ. SCALE	1" = 50'	VERT. SCALE
DESIGNED BY	M. OWENS		JOB NUMBER	1199-336	DATE
DRAWN BY	D. CHRISTMAN		ACAD FILE	PNP-Highland2Horne.dwg	2012
REVIEWED BY	B. MOORE		COPYRIGHT 2012 BY ANDERSON-PERRY & ASSOC., INC.		

RECORD DRAWINGS
JUNE 10, 2013

These record drawings have been prepared, in part, on the basis of information compiled and furnished by others. They may contain some discrepancies and omissions, and do not necessarily represent "exact" field conditions. The Owner and the Engineer accept no responsibility for their accuracy.



BENTON IRRIGATION DISTRICT
IRRIGATION SYSTEM IMPROVEMENTS
PHASE 3B

KIBE TO HORNE RD. PIPING

SHEET

25