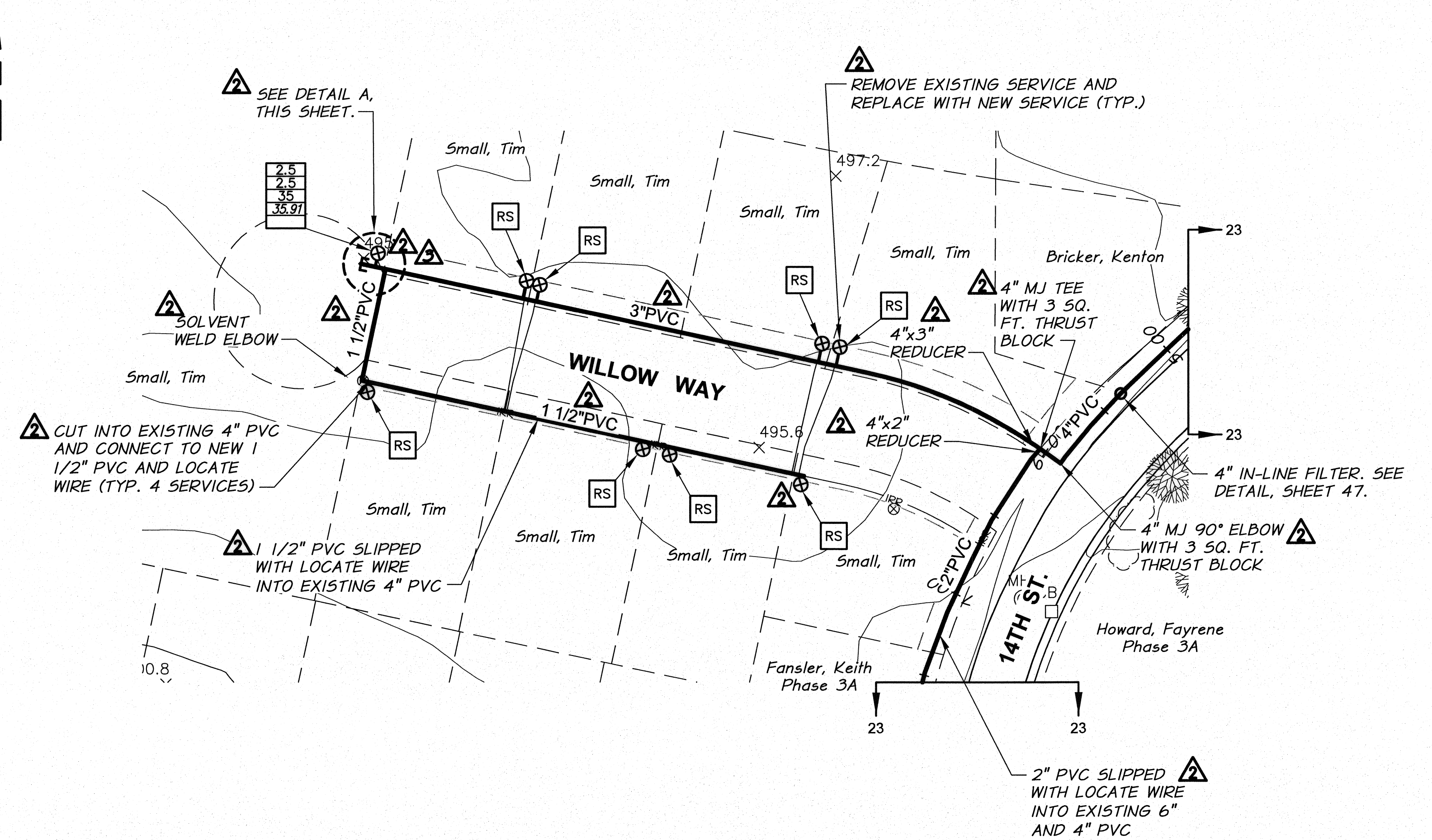


SURFACE RESTORATION SCHEDULE		
LINE	LOCATION (STA.)	DESCRIPTION
WILLOW WAY	REPLACED PIPE LINE	GRAVEL AND CONCRETE
14TH STREET	5+00 TO 7+00	GRAVEL AND ASPHALT/CONCRETE

- NOTES:**
1. MINIMUM COVER FROM FINISH GRADE TO TOP OF PIPE SHALL BE 2.5 FEET.
  2. MINIMUM SLOPE OF INSTALLED PIPING SHALL BE 0.003 FT/FT.
  3. LOT LINES AND RIGHT-OF-WAYS SHOWN ARE APPROXIMATE ONLY.
  4. IT IS ANTICIPATED THE TELEPHONE, POWER, CABLE T.V., WATER, AND SEWER THAT EXIST WITHIN THE STREET AND UTILITY CORRIDOR AND INDIVIDUALLY PROVIDE SERVICE TO EACH LOT WILL BE ENCOUNTERED DURING CONSTRUCTION. CONTRACTOR SHALL PLAN FOR CROSSING AND/OR EXCAVATING ALONG THESE UTILITIES AT EACH LOT AND/OR WITHIN THE STREET AND UTILITY CORRIDOR WITHOUT ADDITIONAL COMPENSATION.
  5. SERVICES LOCATED DOWNHILL OF MAIN LINE ARE TO DRAIN BACK TO MAIN LINE, UNLESS DESIGNATED "WITH DRAIN".

**WORK ITEMS**

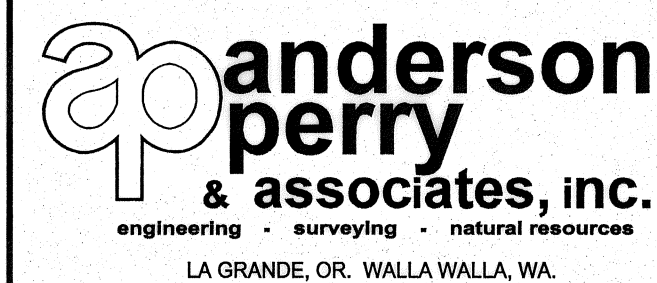
- Ⓒ EXISTING IRRIGATION LINE ALONG ALIGNMENT TO BE ABANDONED. REMOVE AND PLUG AS REQUIRED FOR NEW LINE INSTALLATION.



REVISION	BY	DATE	B.M.	5/13
1	M. OWENS			
2	D. CHRISTMAN			
3	B. MOORE			

SCALE IN FEET		SCALE	
0 50 100 150		HORIZ. SCALE 1"=50'	
		VERT. SCALE	
DESIGNED BY	M. OWENS	JOB NUMBER	1199-336
DRAWN BY	D. CHRISTMAN	DATE	2012
REVIEWED BY	B. MOORE	ACAD FILE	PNP-DaleChris.dwg
COPYRIGHT 2012 BY ANDERSON-PERRY & ASSOC., INC.			

**RECORD DRAWINGS**  
 JUNE 10, 2013  
 These record drawings have been prepared, in part, on the basis of information compiled and furnished by others. They may contain some discrepancies and omissions, and do not necessarily represent "exact" field conditions. The Owner and the Engineer accept no responsibility for their accuracy.



**BENTON IRRIGATION DISTRICT**  
 IRRIGATION SYSTEM IMPROVEMENTS  
 PHASE 3B  
 DALE AVE. TO CHRIS AVE. PIPING  
 WILLOW WAY

ADDED SHEET  
 SHEET  
**23A**  
 REVISED