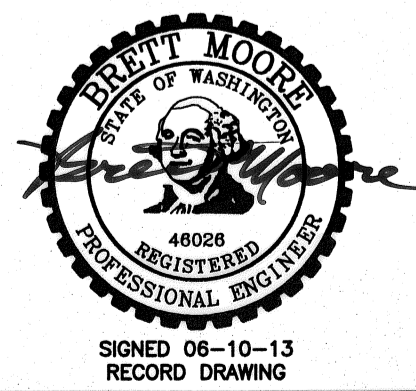
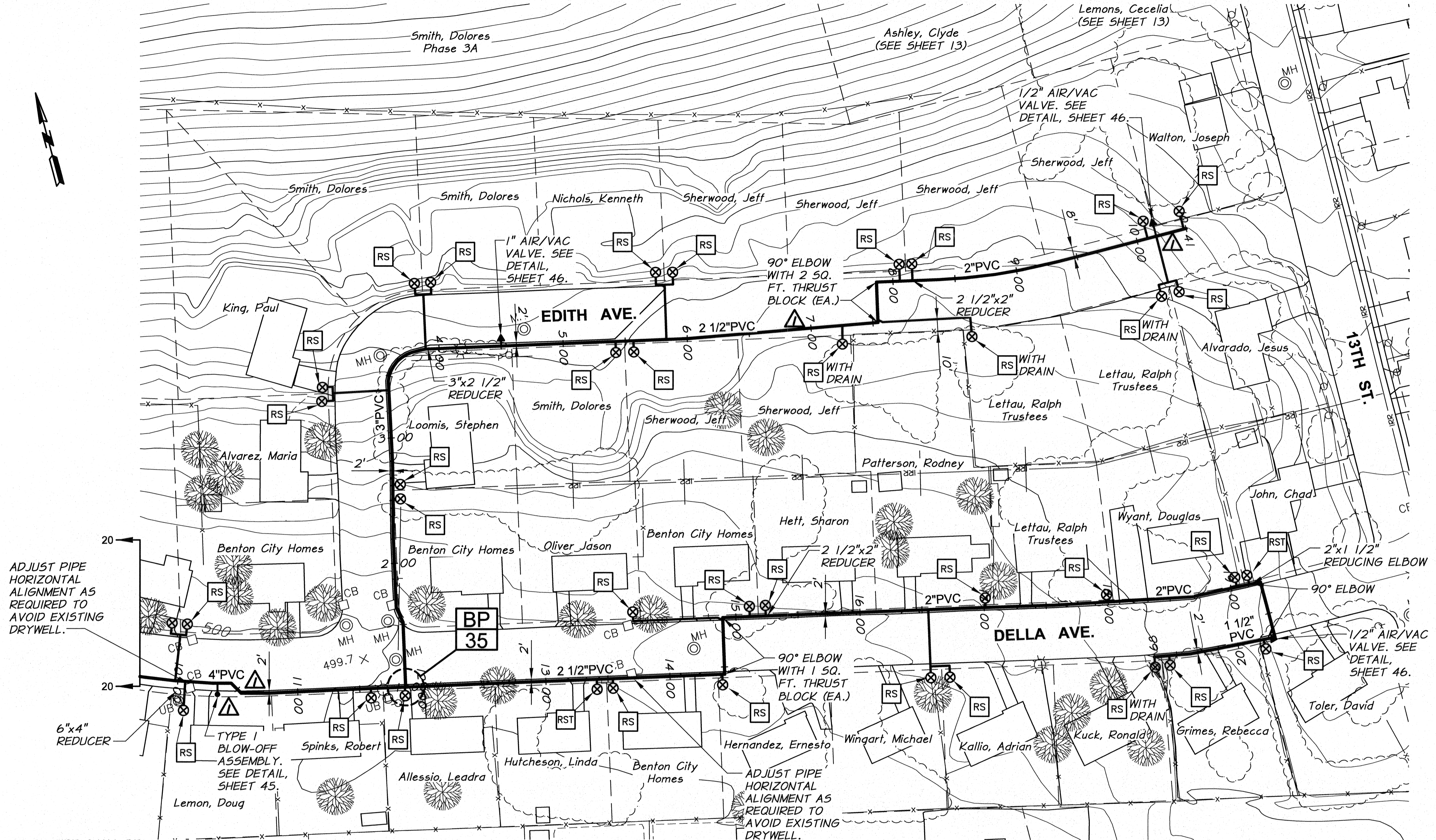


SURFACE RESTORATION SCHEDULE		
LINE	LOCATION (STA.)	DESCRIPTION
DELLA AVENUE	10+00 TO 10+13	LANDSCAPE
	10+13 TO 10+28	CONCRETE
	10+28 TO 11+29	LANDSCAPE
	11+29 TO 11+44	CONCRETE
	11+44 TO 11+88	LANDSCAPE
	11+88 TO 12+02	CONCRETE
	12+02 TO 13+17	LANDSCAPE
	13+17 TO 13+30	CONCRETE
	13+30 TO 14+08	LANDSCAPE
	14+08 TO 14+20	CONCRETE
	14+20 TO 14+44	LANDSCAPE
	14+44 TO 14+85	ASPHALT
	14+85 TO 15+82	LANDSCAPE
	15+82 TO 15+94	CONCRETE
	15+94 TO 16+33	LANDSCAPE
	16+33 TO 16+45	CONCRETE
	16+45 TO 17+26	LANDSCAPE
	17+26 TO 17+38	CONCRETE
	17+38 TO 18+07	LANDSCAPE
	18+07 TO 18+30	CONCRETE
18+30 TO 18+37	LANDSCAPE	
18+37 TO 18+49	GRAVEL	
18+49 TO 19+12	LANDSCAPE	
19+12 TO 19+58	ASPHALT	
19+58 TO 20+00	LANDSCAPE	
20+00 TO 20+12	CONCRETE	
20+12 TO 20+51	LANDSCAPE	
SERVICE AT 16+62	ASPHALT AND LANDSCAPE	
EDITH AVENUE	1+00 TO 1+50	ASPHALT
	1+50 TO 2+63	LANDSCAPE
	2+63 TO 2+81	CONCRETE
	2+81 TO 10+35	HYDROSEED
	SERVICE AT 3+38	ASPHALT AND HYDROSEED
	SERVICE AT 3+89	ASPHALT AND HYDROSEED
	SERVICE AT 5+83	GRAVEL
	SERVICE AT 7+73	GRAVEL
SERVICE AT 10+27	GRAVEL	

GRADE CONTROL SCHEDULE			
LINE	FROM STA.	TO STA.	CONTINUOUS SLOPE DIRECTION
DELLA AVENUE	10+00	19+60	UPWARD
	19+60	20+51	DOWNWARD
EDITH AVENUE	1+00	4+50	UPWARD
	4+50	7+73	DOWNWARD
	7+73	10+35	UPWARD

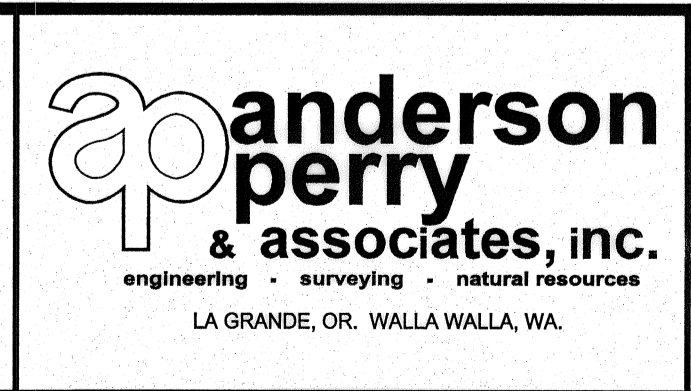
- NOTES:**
- MINIMUM COVER FROM FINISH GRADE TO TOP OF PIPE SHALL BE 2.5 FEET.
 - MINIMUM SLOPE OF INSTALLED PIPING SHALL BE 0.003 FT/FT.
 - LOT LINES AND RIGHT-OF-WAYS SHOWN ARE APPROXIMATE ONLY.
 - IT IS ANTICIPATED THE TELEPHONE, POWER, CABLE T.V., WATER, AND SEWER THAT EXIST WITHIN THE STREET AND UTILITY CORRIDOR AND INDIVIDUALLY PROVIDE SERVICE TO EACH LOT WILL BE ENCOUNTERED DURING CONSTRUCTION. CONTRACTOR SHALL PLAN FOR CROSSING AND/OR EXCAVATING ALONG THESE UTILITIES AT EACH LOT AND/OR WITHIN THE STREET AND UTILITY CORRIDOR WITHOUT ADDITIONAL COMPENSATION.
 - SERVICES LOCATED DOWNHILL OF MAIN LINE ARE TO DRAIN BACK TO MAIN LINE, UNLESS DESIGNATED "WITH DRAIN".



REVISION	BY	DATE
RECORD DRAWING	B.M.	5/13
DESIGNED BY	M. OWENS	
DRAWN BY	D. CHRISTMAN	
REVIEWED BY	B. MOORE	

HORIZ. SCALE 1"=50'		VERT. SCALE
JOB NUMBER	1199-336	
DATE	2012	
ACAD FILE:	PNP-Della.dwg	
COPYRIGHT 2012 BY ANDERSON-PERRY & ASSOC., INC.		

RECORD DRAWINGS
 JUNE 10, 2013
 These record drawings have been prepared, in part, on the basis of information compiled and furnished by others. They may contain some discrepancies and omissions, and do not necessarily represent "exact" field conditions. The Owner and the Engineer accept no responsibility for their accuracy.



BENTON IRRIGATION DISTRICT
 IRRIGATION SYSTEM IMPROVEMENTS
 PHASE 3B
 DELLA AVENUE PIPING
 DELLA AVE. - EDITH AVE.