

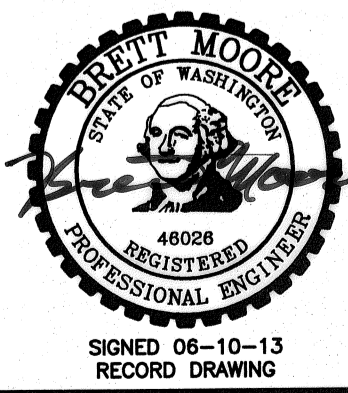
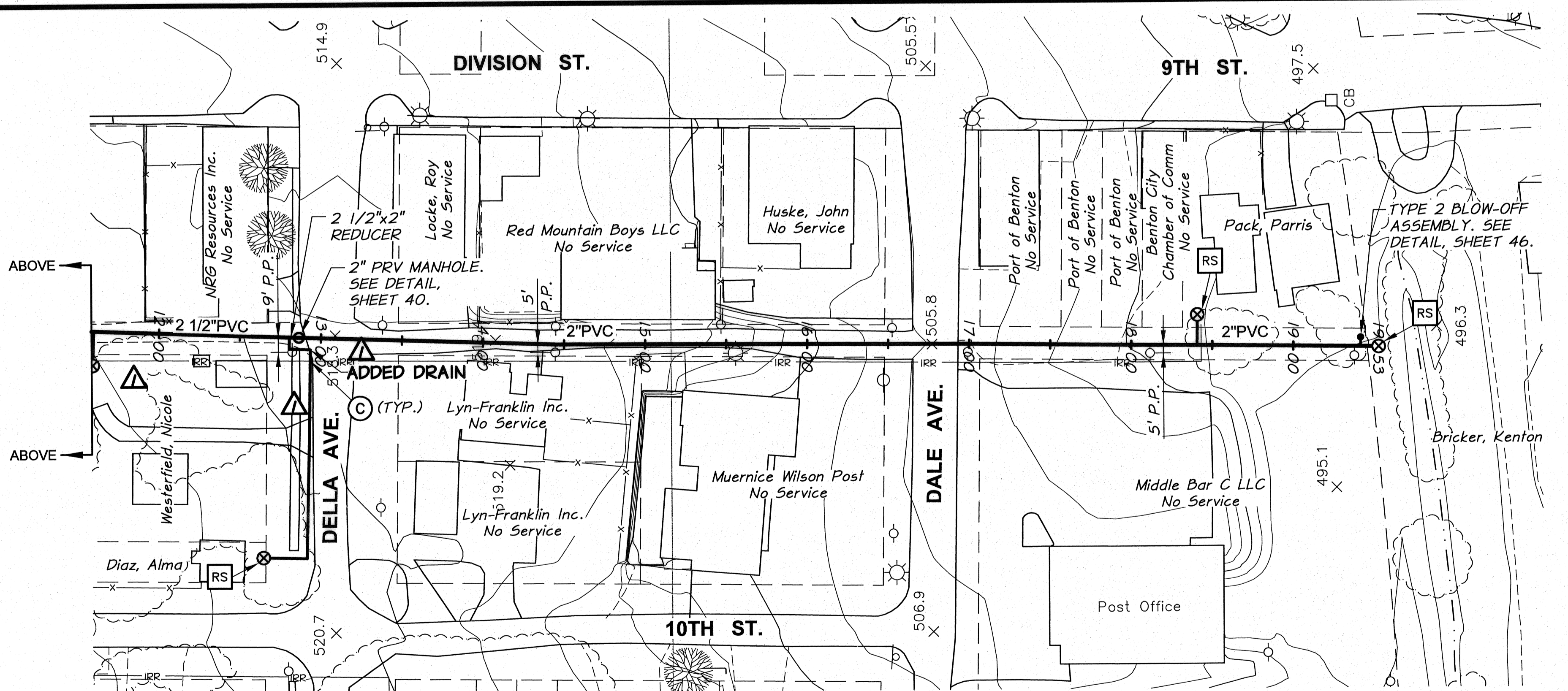
WORK ITEMS

Ⓒ EXISTING IRRIGATION LINE ALONG ALIGNMENT TO BE ABANDONED, REMOVE AND PLUG AS REQUIRED FOR NEW LINE INSTALLATION.

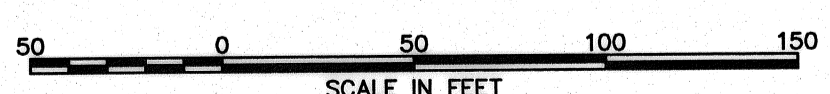
| SURFACE RESTORATION SCHEDULE | | |
|------------------------------|------------------|----------------------|
| LINE | LOCATION (STA.) | DESCRIPTION |
| 9TH-10TH ALLEY | 1+00 TO 5+62 | GRAVEL |
| | 5+62 TO 5+92 | ASPHALT |
| | 5+92 TO 9+22 | GRAVEL |
| | 9+22 TO 16+93 | ASPHALT |
| | 16+93 TO 19+53 | GRAVEL |
| | SERVICE AT 9+50 | ASPHALT |
| | SERVICE AT 12+80 | HYDROSEED AND GRAVEL |

| GRADE CONTROL SCHEDULE | | | |
|------------------------|-----------|---------|----------------------------|
| LINE | FROM STA. | TO STA. | CONTINUOUS SLOPE DIRECTION |
| 9TH-10TH ALLEY | 1+00 | 19+53 | DOWNWARD |

- NOTES:**
- MINIMUM COVER FROM FINISH GRADE TO TOP OF PIPE SHALL BE 2.5 FEET.
 - MINIMUM SLOPE OF INSTALLED PIPING SHALL BE 0.003 FT/FT.
 - LOT LINES AND RIGHT-OF-WAYS SHOWN ARE APPROXIMATE ONLY.
 - IT IS ANTICIPATED THE TELEPHONE, POWER, CABLE T.V., WATER, AND SEWER THAT EXIST WITHIN THE STREET AND UTILITY CORRIDOR AND INDIVIDUALLY PROVIDE SERVICE TO EACH LOT WILL BE ENCOUNTERED DURING CONSTRUCTION. CONTRACTOR SHALL PLAN FOR CROSSING AND/OR EXCAVATING ALONG THESE UTILITIES AT EACH LOT AND/OR WITHIN THE STREET AND UTILITY CORRIDOR WITHOUT ADDITIONAL COMPENSATION.
 - SERVICES LOCATED DOWNHILL OF MAIN LINE ARE TO DRAIN BACK TO MAIN LINE, UNLESS DESIGNATED "WITH DRAIN".

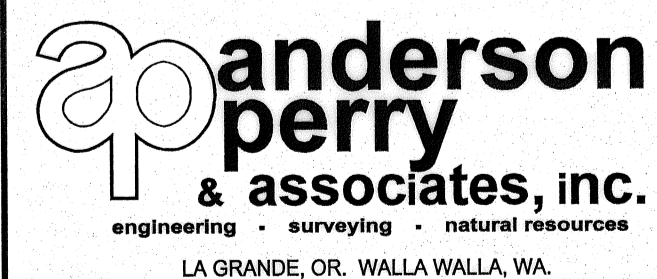


| | | | | | |
|----------------|--------------|---|------------------|------|------|
| RECORD DRAWING | | BY | B.M. | DATE | 5/13 |
| DESIGNED BY | M. OWENS | HORIZ. SCALE | 1" = 50' | | |
| DRAWN BY | D. CHRISTMAN | DATE | 2012 | | |
| REVIEWED BY | B. MOORE | JOB NUMBER | 1199-336 | | |
| | | ACAD FILE | PNP-Downtown.dwg | | |
| | | COPYRIGHT 2012 BY ANDERSON-PERRY & ASSOC., INC. | | | |



RECORD DRAWINGS
JUNE 10, 2013

These record drawings have been prepared, in part, on the basis of information compiled and furnished by others. They may contain some discrepancies and omissions, and do not necessarily represent "exact" field conditions. The Owner and the Engineer accept no responsibility for their accuracy.



BENTON IRRIGATION DISTRICT
IRRIGATION SYSTEM IMPROVEMENTS
PHASE 3B

DOWNTOWN PIPING
9TH-10TH ST. ALLEY

SHEET

16