

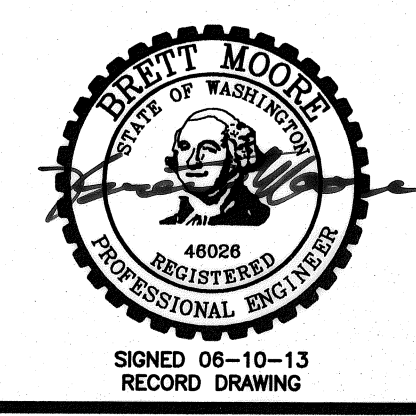
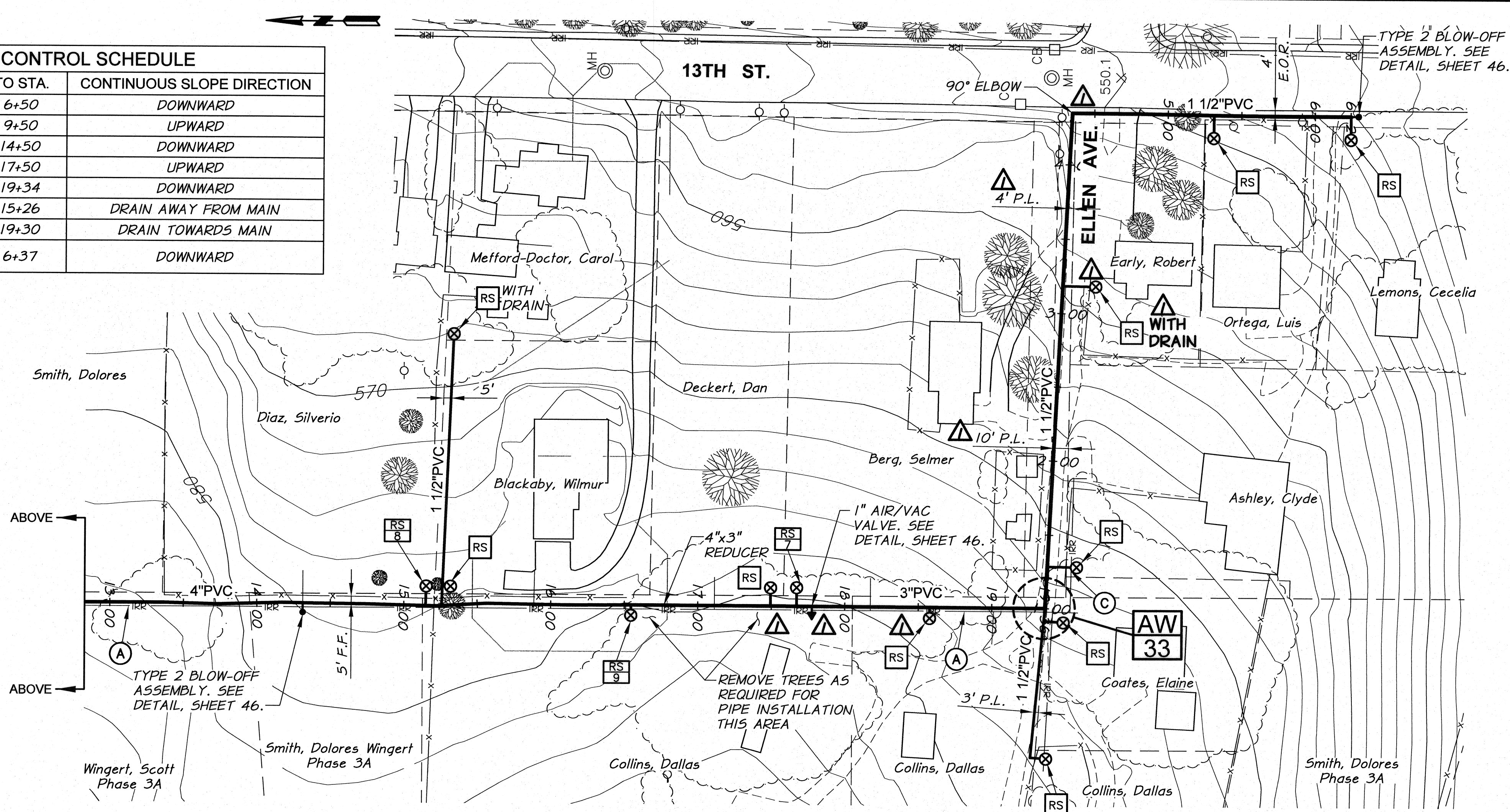
SURFACE RESTORATION SCHEDULE		
LINE	LOCATION (STA.)	DESCRIPTION
14TH STREET	1+00 TO 19+29	HYDROSEED
	19+29 TO 19+34	GRAVEL
	SERVICE AT 15+26	HYDROSEED
	SERVICE AT 19+30	GRAVEL
ELLEN AVENUE	1+00 TO 6+11	HYDROSEED AND GRAVEL
	6+11 TO 6+30	GRAVEL
	6+30 TO 6+37	HYDROSEED AND LANDSCAPE

GRADE CONTROL SCHEDULE				
LINE	FROM STA.	TO STA.	CONTINUOUS SLOPE DIRECTION	
14TH STREET	1+00	6+50	DOWNWARD	
	6+50	9+50	UPWARD	
	9+50	14+50	DOWNWARD	
	14+50	17+50	UPWARD	
	17+50	19+34	DOWNWARD	
	SERVICE AT 15+26			DRAIN AWAY FROM MAIN
	SERVICE AT 19+30			DRAIN TOWARDS MAIN
ELLEN AVENUE	1+00	6+37	DOWNWARD	

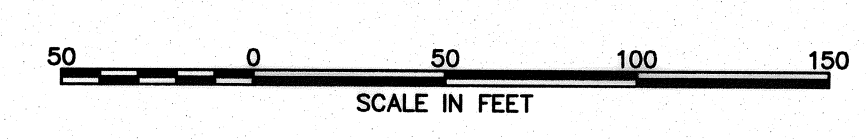
- NOTES:**
- MINIMUM COVER FROM FINISH GRADE TO TOP OF PIPE SHALL BE 2.5 FEET.
 - MINIMUM SLOPE OF INSTALLED PIPING SHALL BE 0.003 FT/FT.
 - LOT LINES AND RIGHT-OF-WAYS SHOWN ARE APPROXIMATE ONLY.
 - IT IS ANTICIPATED THE TELEPHONE, POWER, CABLE T.V., WATER, AND SEWER THAT EXIST WITHIN THE STREET AND UTILITY CORRIDOR AND INDIVIDUALLY PROVIDE SERVICE TO EACH LOT WILL BE ENCOUNTERED DURING CONSTRUCTION. CONTRACTOR SHALL PLAN FOR CROSSING AND/OR EXCAVATING ALONG THESE UTILITIES AT EACH LOT AND/OR WITHIN THE STREET AND UTILITY CORRIDOR WITHOUT ADDITIONAL COMPENSATION.
 - SERVICES LOCATED DOWNHILL OF MAIN LINE ARE TO DRAIN BACK TO MAIN LINE, UNLESS DESIGNATED "WITH DRAIN".

WORK ITEMS

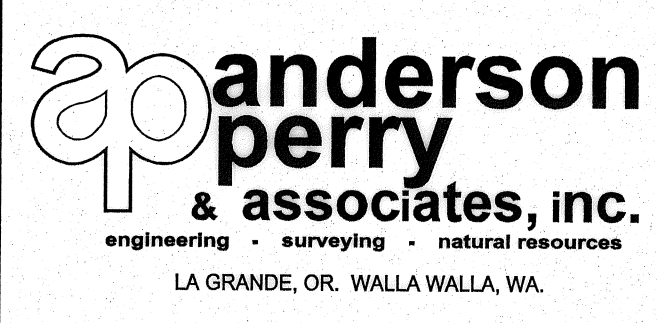
- (A) EXISTING IRRIGATION LINE ALONG OR CROSSING ALIGNMENT. EXACT LOCATION UNKNOWN. REMOVE AND PLUG AS REQUIRED FOR NEW LINE INSTALLATION.
- (C) EXISTING IRRIGATION LINE ALONG ALIGNMENT TO BE ABANDONED. REMOVE AND PLUG AS REQUIRED FOR NEW LINE INSTALLATION.



REVISION		DATE	BY	DATE
RECORD DRAWING		5/13	B.M.	
DESIGNED BY	M. OWENS			
DRAWN BY	D. CHRISTMAN			
REVIEWED BY	B. MOORE			
JOB NUMBER		1199-336	DATE	
ACAD FILE:		PNP-OIE2Ellen.dwg	2012	
COPYRIGHT 2012 BY ANDERSON-PERRY & ASSOC., INC.				



RECORD DRAWINGS
 JUNE 10, 2013
 These record drawings have been prepared, in part, on the basis of information compiled and furnished by others. They may contain some discrepancies and omissions, and do not necessarily represent "exact" field conditions. The Owner and the Engineer accept no responsibility for their accuracy.



BENTON IRRIGATION DISTRICT
 IRRIGATION SYSTEM IMPROVEMENTS
 PHASE 3B
 O.I.E. HWY. TO ELLEN AVE. PIPING