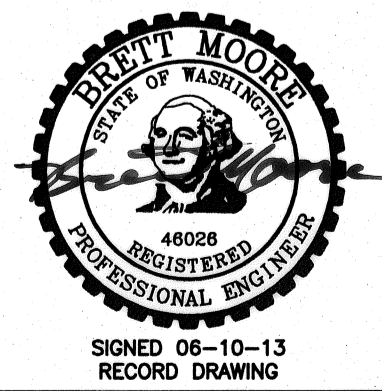


SURFACE RESTORATION SCHEDULE		
LINE	LOCATION (STA.)	DESCRIPTION
HORNE ROAD	0+00 to 1+25	HYDROSEED
	1+25 to 1+47	ASPHALT
	1+47 to 4+19	HYDROSEED
	4+19 to 4+29	ASPHALT
	4+29 to 6+74	HYDROSEED AND GRAVEL
	6+74 to 7+02	ASPHALT
	7+02 to 11+01	HYDROSEED
	1+00 to 2+60	HYDROSEED
	2+60 to 3+60	ASPHALT AND HYDROSEED
	3+60 to 5+52	HYDROSEED

GRADE CONTROL SCHEDULE			
LINE	FROM STA.	TO STA.	CONTINUOUS SLOPE DIRECTION
HORNE ROAD	1+00	3+60	DOWNWARD
	3+60	7+50	UPWARD
	7+50	11+01	DOWNWARD
BRANCH EAST	1+00	5+52	DOWNWARD

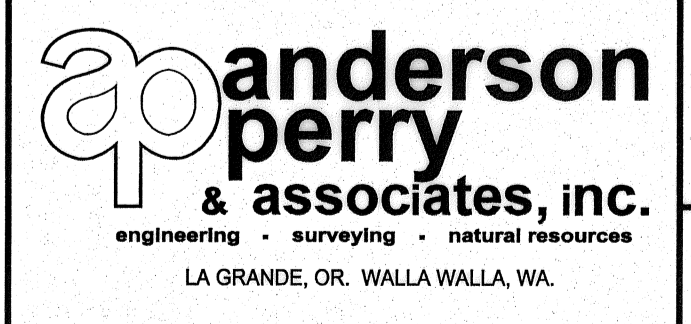
- NOTES:**
- MINIMUM COVER FROM FINISH GRADE TO TOP OF PIPE SHALL BE 2.5 FEET.
 - MINIMUM SLOPE OF INSTALLED PIPING SHALL BE 0.003 FT/FT.
 - LOT LINES AND RIGHT-OF-WAYS SHOWN ARE APPROXIMATE ONLY.
 - IT IS ANTICIPATED THE TELEPHONE, POWER, CABLE T.V., WATER, AND SEWER THAT EXIST WITHIN THE STREET AND UTILITY CORRIDOR AND INDIVIDUALLY PROVIDE SERVICE TO EACH LOT WILL BE ENCOUNTERED DURING CONSTRUCTION. CONTRACTOR SHALL PLAN FOR CROSSING AND/OR EXCAVATING ALONG THESE UTILITIES AT EACH LOT AND/OR WITHIN THE STREET AND UTILITY CORRIDOR WITHOUT ADDITIONAL COMPENSATION.
 - SERVICES LOCATED DOWNHILL OF MAIN LINE ARE TO DRAIN BACK TO MAIN LINE, UNLESS DESIGNATED "WITH DRAIN".



RECORD DRAWING		B.M.	5/13
DESIGNED BY	M. OWENS	BY	
DRAWN BY	D. CHRISTMAN	DATE	2012
REVIEWED BY	B. MOORE		

SCALE IN FEET	
HORIZ. SCALE	1" = 50'
VERT. SCALE	
JOB NUMBER	1199-336
DATE	2012
ACAD FILE	PNP-01E2Fay.dwg
COPYRIGHT 2012 BY ANDERSON-PERRY & ASSOC., INC.	

RECORD DRAWINGS
 JUNE 10, 2013
 These record drawings have been prepared, in part, on the basis of information compiled and furnished by others. They may contain some discrepancies and omissions, and do not necessarily represent "exact" field conditions. The Owner and the Engineer accept no responsibility for their accuracy.



BENTON IRRIGATION DISTRICT
 IRRIGATION SYSTEM IMPROVEMENTS
 PHASE 3B
 O.I.E. HWY. TO FAY AVENUE PIPING
 HORNE RD.