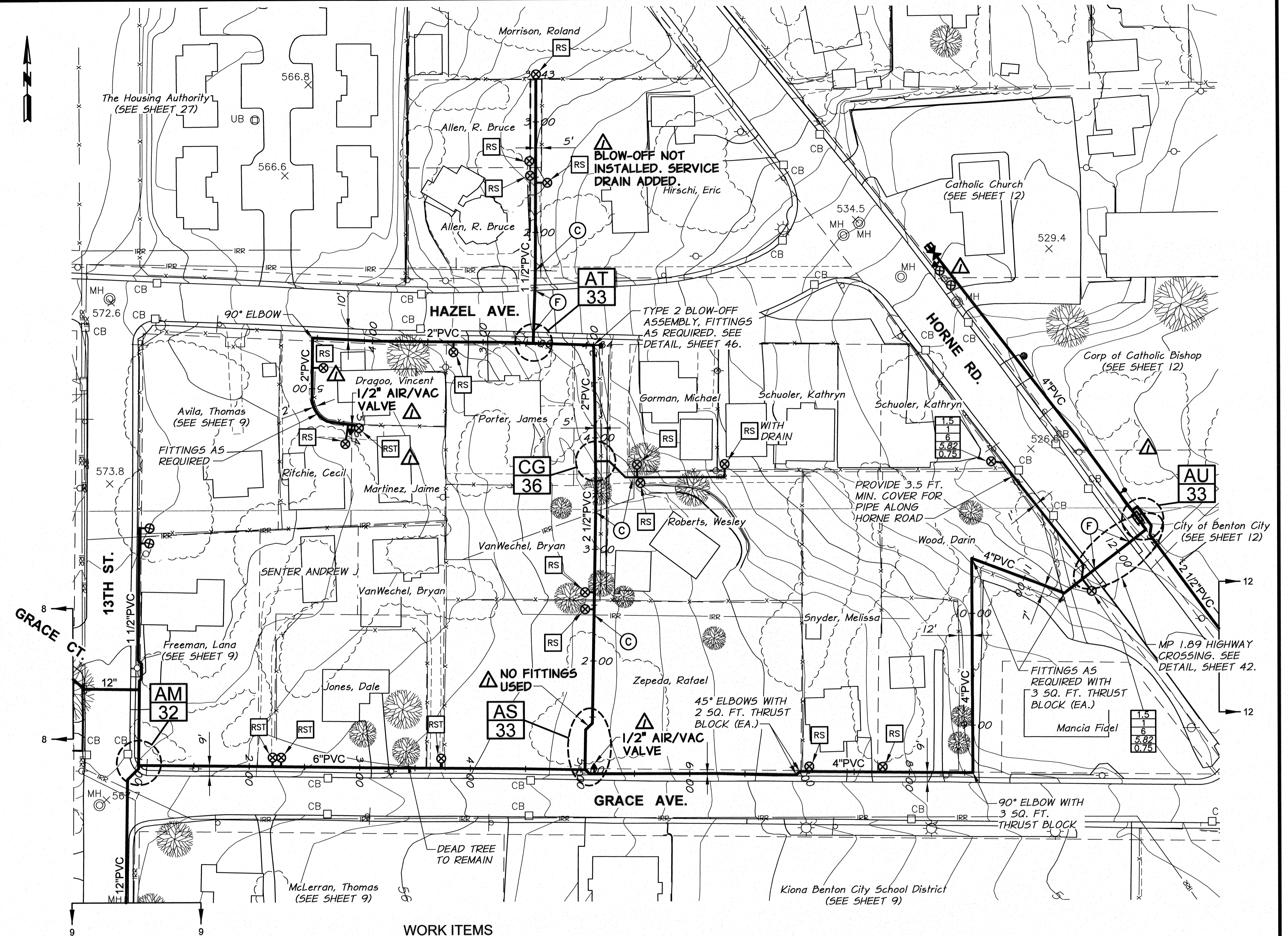


SURFACE RESTORATION SCHEDULE		
LINE	LOCATION (STA.)	DESCRIPTION
GRACE AVENUE	1+00 TO 2+06	LANDSCAPE
	2+06 TO 2+22	GRAVEL
	2+22 TO 3+10	LANDSCAPE AND HYDROSEED
	3+10 TO 3+26	ASPHALT
	3+26 TO 3+63	LANDSCAPE AND HYDROSEED
	3+63 TO 3+73	GRAVEL
	3+73 TO 5+09	HYDROSEED
	5+09 TO 6+96	ASPHALT
	6+96 TO 8+58	LANDSCAPE
	8+58 TO 11+68	HYDROSEED
GRACE TO HAZEL INTERTIE	11+68 TO 12+18	HYDROSEED
	1+00 TO 4+84	HYDROSEED
HAZEL AVENUE	SERVICE AT 3+79	GRAVEL AND LANDSCAPE
	2+00 TO 2+19	LANDSCAPE
	2+19 TO 2+39	GRAVEL
	2+39 TO 2+96	LANDSCAPE
	2+96 TO 3+14	ASPHALT
	3+14 TO 4+07	LANDSCAPE
BRANCH NORTH	4+07 TO 4+30	ASPHALT
	4+30 TO 5+64	GRAVEL
	1+00 TO 1+05	LANDSCAPE
	1+05 TO 1+52	ASPHALT
	1+52 TO 2+58	GRAVEL
	2+58 TO 3+43	LANDSCAPE

GRADE CONTROL SCHEDULE			
LINE	FROM STA.	TO STA.	CONTINUOUS SLOPE DIRECTION
GRACE AVENUE	1+00	12+32	DOWNWARD
GRACE TO HAZEL INTERTIE	1+00	4+84	DOWNWARD
	SERVICE AT 3+79		DRAIN AWAY FROM MAIN
HAZEL AVENUE	2+00	5+00	UPWARD
	5+00	5+64	DOWNWARD
BRANCH NORTH	1+00	2+50	DOWNWARD
	2+50	3+43	UPWARD

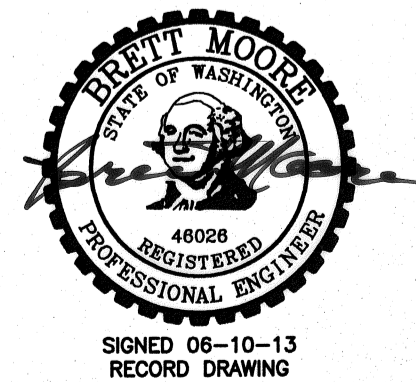
NOTES:

- MINIMUM COVER FROM FINISH GRADE TO TOP OF PIPE SHALL BE 2.5 FEET.
- MINIMUM SLOPE OF INSTALLED PIPING SHALL BE 0.003 FT/FT.
- LOT LINES AND RIGHT-OF-WAYS SHOWN ARE APPROXIMATE ONLY.
- IT IS ANTICIPATED THE TELEPHONE, POWER, CABLE T.V., WATER, AND SEWER THAT EXIST WITHIN THE STREET AND UTILITY CORRIDOR AND INDIVIDUALLY PROVIDE SERVICE TO EACH LOT WILL BE ENCOUNTERED DURING CONSTRUCTION. CONTRACTOR SHALL PLAN FOR CROSSING AND/OR EXCAVATING ALONG THESE UTILITIES AT EACH LOT AND/OR WITHIN THE STREET AND UTILITY CORRIDOR WITHOUT ADDITIONAL COMPENSATION.
- SERVICES LOCATED DOWNHILL OF MAIN LINE ARE TO DRAIN BACK TO MAIN LINE, UNLESS DESIGNATED "WITH DRAIN".



WORK ITEMS

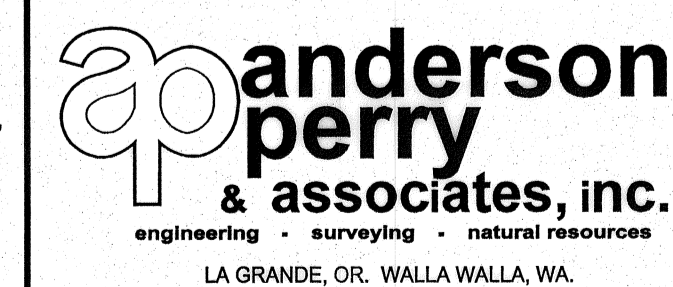
- (C) EXISTING IRRIGATION LINE ALONG ALIGNMENT TO BE ABANDONED. REMOVE AND PLUG AS REQUIRED FOR NEW LINE INSTALLATION.
- (F) REPLACE 10 FT. SECTION OF SIDEWALK MATCHING EXISTING SIDEWALK WIDTH WITH 4" THICK 3000 PSI CONCRETE WITH #3 AT 24" O.C., EACH WAY. PAID FOR UNDER PAY ITEM "SIDEWALK CROSSING".



RECORD DRAWING		B.M.	5/13	SCALE IN FEET	
DESIGNED BY	M. OWENS	HORIZ. SCALE	1"=50'	VERT. SCALE	
DRAWN BY	D. CHRISTMAN	JOB NUMBER	1199-336	DATE	2012
REVIEWED BY	B. MOORE	ACAD FILE	PNP-OIE2Fay.dwg	COPYRIGHT 2012 BY ANDERSON-PERRY & ASSOC., INC.	

RECORD DRAWINGS
JUNE 10, 2013

These record drawings have been prepared, in part, on the basis of information compiled and furnished by others. They may contain some discrepancies and omissions, and do not necessarily represent "exact" field conditions. The Owner and the Engineer accept no responsibility for their accuracy.



BENTON IRRIGATION DISTRICT
IRRIGATION SYSTEM IMPROVEMENTS
PHASE 3B

O.I.E. HWY. TO FAY AVENUE PIPING
GRACE AVE. - HAZEL AVE.

SHEET

11

ARCHIVED