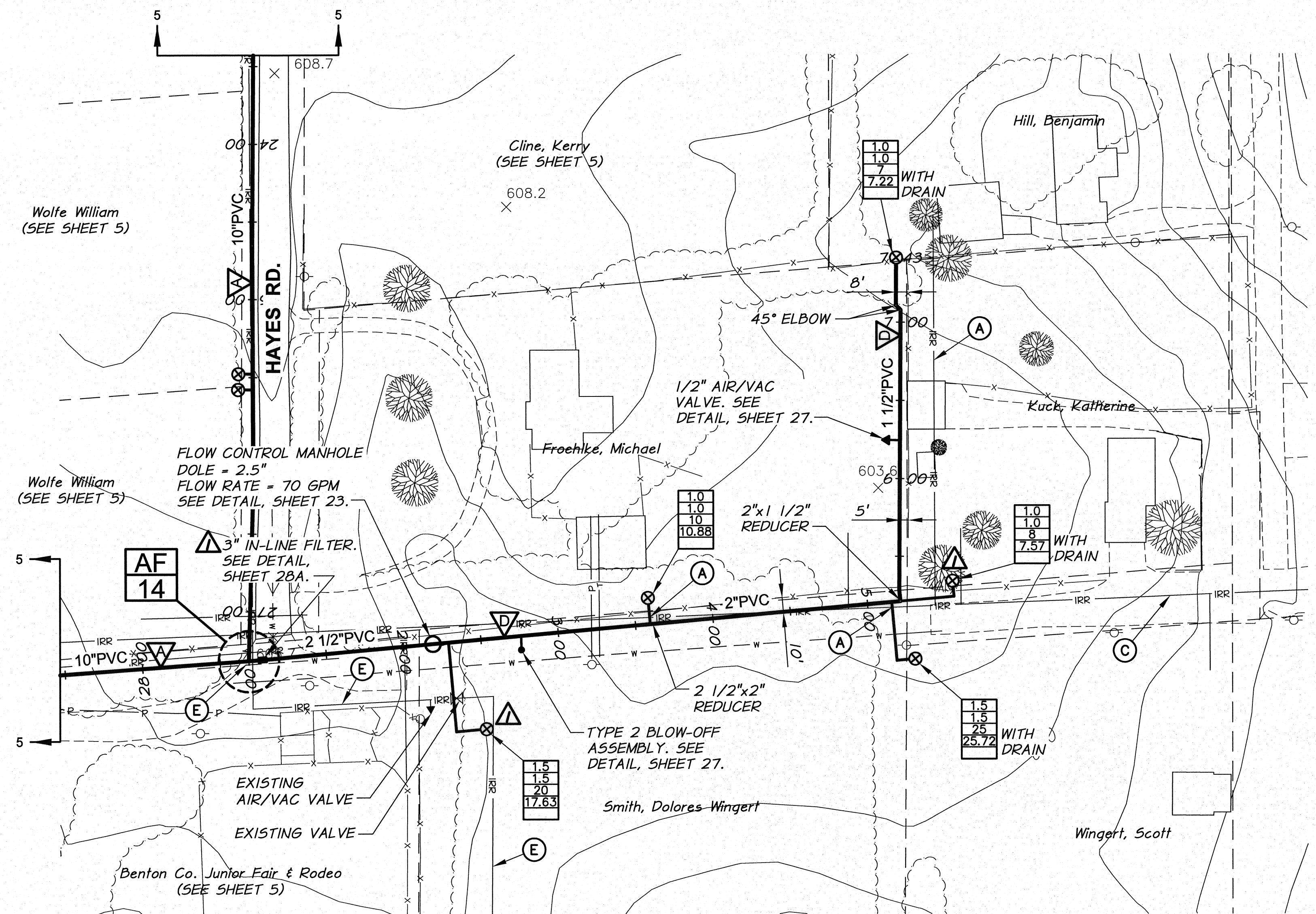


SURFACE RESTORATION SCHEDULE		
LINE	LOCATION (STA.)	DESCRIPTION
▽	1+00 TO 2+05	GRAVEL
	2+05 TO 7+43	HYDROSEED

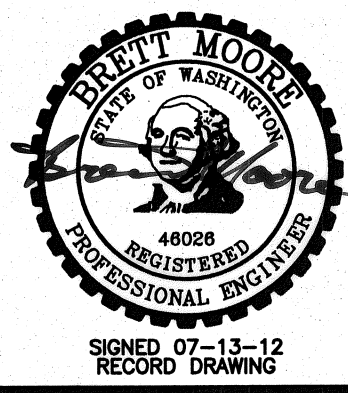
GRADE CONTROL SCHEDULE			
LINE	FROM STA.	TO STA.	CONTINUOUS SLOPE DIRECTION
▽	1+00	2+73	DOWNWARD
	2+73	6+24	UPWARD
	6+24	7+43	DOWNWARD

- NOTES:**
- MINIMUM COVER FROM FINISH GRADE TO TOP OF PIPE SHALL BE 2.5 FEET.
 - MINIMUM SLOPE OF INSTALLED PIPING SHALL BE 0.003 FT/FT.
 - LOT LINES AND RIGHT-OF-WAYS SHOWN ARE APPROXIMATE ONLY.



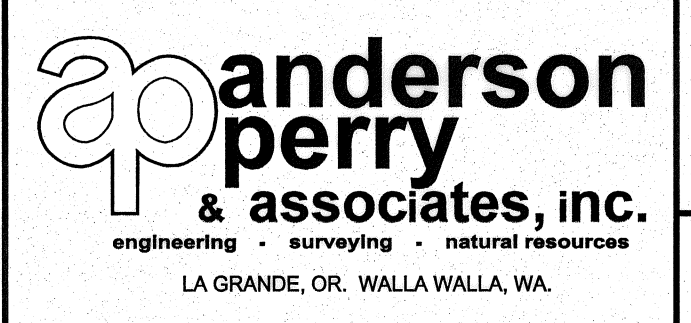
WORK ITEMS

- (A) EXISTING IRRIGATION LINE ALONG OR CROSSING ALIGNMENT. EXACT LOCATION UNKNOWN. REMOVE AND PLUG AS REQUIRED FOR NEW LINE INSTALLATION.
- (C) EXISTING IRRIGATION LINE ALONG ALIGNMENT TO BE ABANDONED. REMOVE AND PLUG AS REQUIRED FOR NEW LINE INSTALLATION.
- (E) EXISTING IRRIGATION LINE ALONG OR CROSSING ALIGNMENT TO REMAIN. EXACT LOCATION UNKNOWN. POTHOLE PRIOR TO CONSTRUCTION. FOR MAIN LINE CROSSING CONFLICT, LOWER EXISTING LINE UNDER NEW LINE AS REQUIRED. SEE DETAIL, SHEET 28. FOR MAIN LINE PARALLEL LINE CONFLICT, ADJUST LOCATION OF NEW MAIN LINE AS REQUESTED BY THE ENGINEER TO PROVIDE CLEARANCE BETWEEN LINES. FOR NEW SERVICE LINE CROSSING EXISTING LINE, CONSTRUCT NEW SERVICE LINE UNDER THE EXISTING LINE, UNLESS OTHERWISE APPROVED BY THE ENGINEER. WORK TO BE INCIDENTAL TO SERVICE WORK. USE FITTINGS AS REQUIRED.



RECORD DRAWING		B.M.	7/12	SCALE IN FEET 0 50 100 150	
DESIGNED BY	R. HARRIS	HORIZ. SCALE	1" = 50'	VERT. SCALE	
DRAWN BY	D. CHRISTMAN	JOB NUMBER	1199-336	DATE	2011
REVIEWED BY	B. MOORE	ACAD FILE:	PNP-Highland2Kendall.dwg		
COPYRIGHT 2011 BY ANDERSON-PERRY & ASSOC., INC.					

RECORD DRAWINGS
 These record drawings have been prepared, in part, on the basis of information compiled and furnished by others. They may contain some discrepancies and omissions, and do not necessarily represent "exact" field conditions. The Owner and the Engineer accept no responsibility for their accuracy.



BENTON IRRIGATION DISTRICT
 IRRIGATION SYSTEM IMPROVEMENTS
 PHASE 3A
 HIGHLAND RD. TO KENDALL RD. PIPING
 LINE D STA. 1+00 TO STA. 7+43