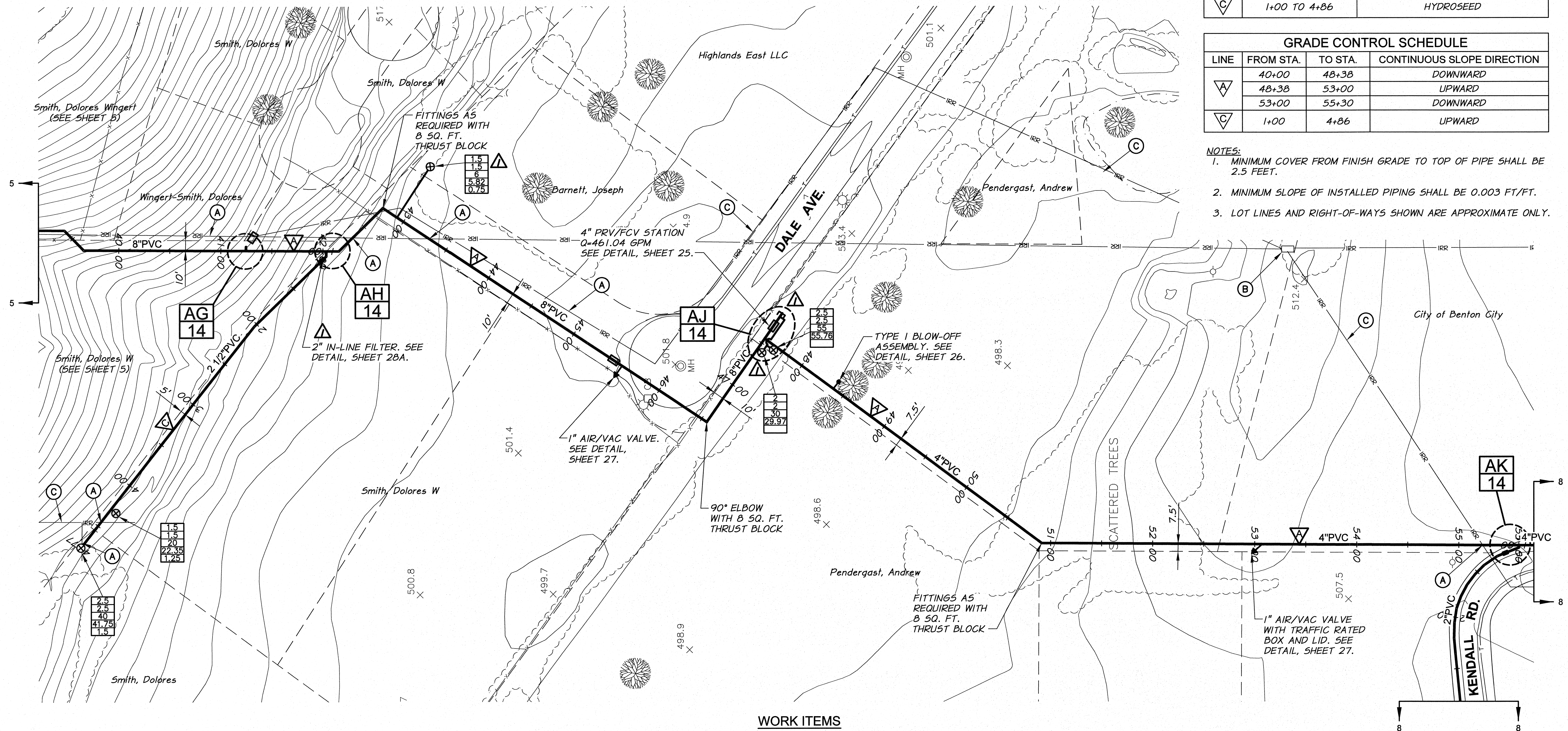


SURFACE RESTORATION SCHEDULE		
LINE	LOCATION (STA.)	DESCRIPTION
A	40+00 TO 45+55	HYDROSEED
	45+55 TO 46+40	ASPHALT AND GRAVEL
	46+40 TO 55+30	HYDROSEED
C	1+00 TO 4+86	HYDROSEED

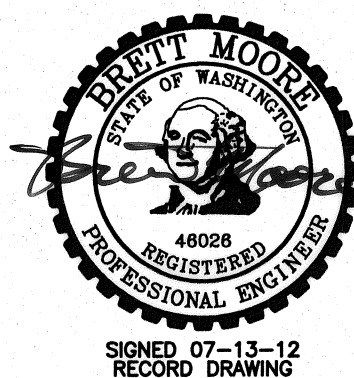
GRADE CONTROL SCHEDULE			
LINE	FROM STA.	TO STA.	CONTINUOUS SLOPE DIRECTION
A	40+00	48+38	DOWNWARD
	48+38	53+00	UPWARD
	53+00	55+30	DOWNWARD
C	1+00	4+86	UPWARD

- NOTES:**
- MINIMUM COVER FROM FINISH GRADE TO TOP OF PIPE SHALL BE 2.5 FEET.
  - MINIMUM SLOPE OF INSTALLED PIPING SHALL BE 0.003 FT/FT.
  - LOT LINES AND RIGHT-OF-WAYS SHOWN ARE APPROXIMATE ONLY.

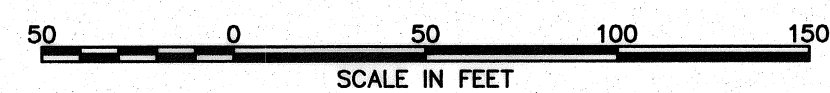


**WORK ITEMS**

- (A) EXISTING IRRIGATION LINE ALONG OR CROSSING ALIGNMENT. EXACT LOCATION UNKNOWN. REMOVE AND PLUG AS REQUIRED FOR NEW LINE INSTALLATION.
- (B) EXISTING IRRIGATION CONTROL STRUCTURE TO BE REMOVED.
- (C) EXISTING IRRIGATION LINE ALONG ALIGNMENT TO BE ABANDONED. REMOVE AND PLUG AS REQUIRED FOR NEW LINE INSTALLATION.

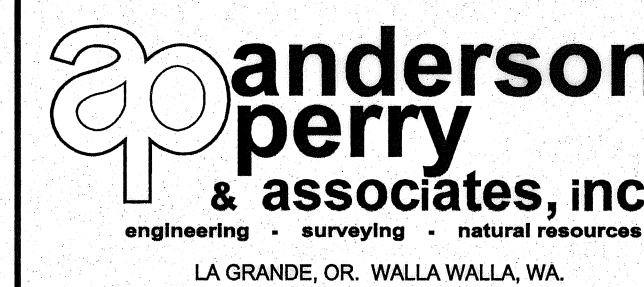


RECORD DRAWING		BY B.M.		DATE 7/12	
DESIGNED BY	R. HARRIS	JOB NUMBER	1199-336	DATE	2011
DRAWN BY	D. CHRISTMAN	ACAD FILE:	PNP-Highland2Kendall.dwg		
REVIEWED BY	B. MOORE	COPYRIGHT 2011 BY ANDERSON-PERRY & ASSOC., INC.			



**RECORD DRAWINGS**

These record drawings have been prepared, in part, on the basis of information compiled and furnished by others. They may contain some discrepancies and omissions, and do not necessarily represent "exact" field conditions. The Owner and the Engineer accept no responsibility for their accuracy.



**BENTON IRRIGATION DISTRICT  
IRRIGATION SYSTEM IMPROVEMENTS  
PHASE 3A**

HIGHLAND RD. TO KENDALL RD. PIPING  
LINE A STA. 40+00 TO STA. 55+30 AND LINE C

SHEET

6

ARCHIVED