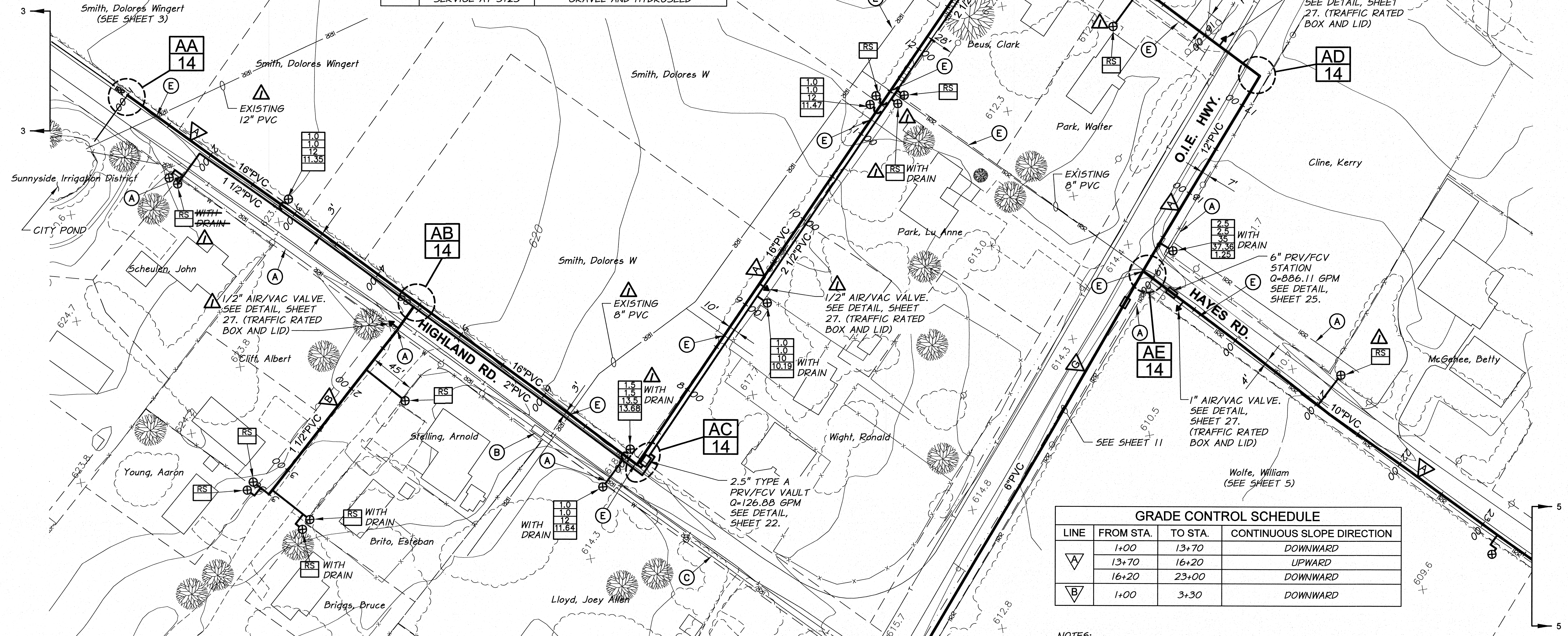


**WORK ITEMS**

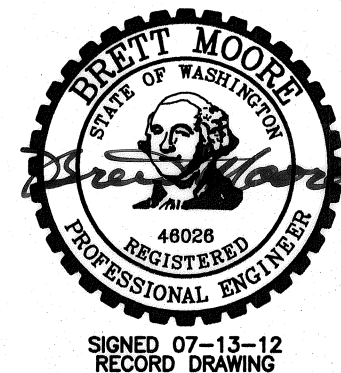
- (A) EXISTING IRRIGATION LINE ALONG OR CROSSING ALIGNMENT. EXACT LOCATION UNKNOWN. REMOVE AND PLUG AS REQUIRED FOR NEW LINE INSTALLATION.
- (B) EXISTING IRRIGATION CONTROL STRUCTURE TO BE REMOVED.
- (C) EXISTING IRRIGATION LINE ALONG ALIGNMENT TO BE ABANDONED. REMOVE AND PLUG AS REQUIRED FOR NEW LINE INSTALLATION.
- (E) EXISTING IRRIGATION LINE ALONG OR CROSSING ALIGNMENT TO REMAIN. EXACT LOCATION UNKNOWN. POTHOLE PRIOR TO CONSTRUCTION. FOR MAIN LINE CROSSING CONFLICT, LOWER EXISTING LINE UNDER NEW LINE AS REQUIRED. SEE DETAIL, SHEET 28. FOR MAIN LINE PARALLEL LINE CONFLICT, ADJUST LOCATION OF NEW MAIN LINE AS REQUESTED BY THE ENGINEER TO PROVIDE CLEARANCE BETWEEN LINES. FOR NEW SERVICE LINE CROSSING EXISTING LINE, CONSTRUCT NEW SERVICE LINE UNDER THE EXISTING LINE, UNLESS OTHERWISE APPROVED BY THE ENGINEER. WORK TO BE INCIDENTAL TO SERVICE WORK. USE FITTINGS AS REQUIRED.

SURFACE RESTORATION SCHEDULE		
LINE	LOCATION (STA.)	DESCRIPTION
A	1+00 TO 13+80	GRAVEL
	13+80 TO 16+20	HYDROSEED AND GRAVEL
	16+20 TO 16+60	ASPHALT AND GRAVEL
	16+60 TO 18+60	HYDROSEED AND GRAVEL
	18+60 TO 18+90	ASPHALT AND GRAVEL
	18+90 TO 23+00	HYDROSEED AND GRAVEL
	SERVICE AT 1+90	ASPHALT, GRAVEL, HYDROSEED
B	SERVICE AT 7+00	ASPHALT, GRAVEL, HYDROSEED
	SERVICE AT 16+00	GRAVEL AND HYDROSEED
	SERVICE AT 21+00	ASPHALT, GRAVEL, HYDROSEED
	1+00 TO 1+40	ASPHALT AND GRAVEL
	1+40 TO 3+30	GRAVEL
	SERVICE AT 1+80	GRAVEL AND HYDROSEED
	SERVICE AT 3+25	GRAVEL AND HYDROSEED



GRADE CONTROL SCHEDULE			
LINE	FROM STA.	TO STA.	CONTINUOUS SLOPE DIRECTION
A	1+00	13+70	DOWNWARD
	13+70	16+20	UPWARD
	16+20	23+00	DOWNWARD
B	1+00	3+30	DOWNWARD

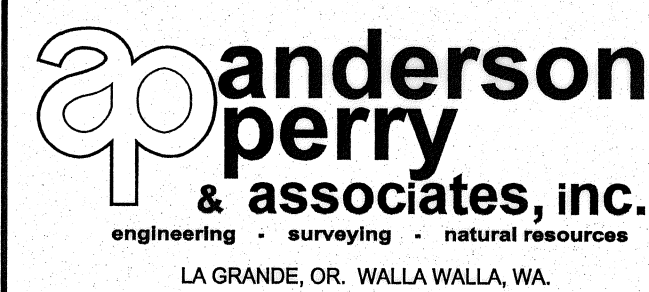
- NOTES:**
- MINIMUM COVER FROM FINISH GRADE TO TOP OF PIPE SHALL BE 2.5 FEET.
  - MINIMUM SLOPE OF INSTALLED PIPING SHALL BE 0.003 FT/FT.
  - LOT LINES AND RIGHT-OF-WAYS SHOWN ARE APPROXIMATE ONLY.



RECORD DRAWING		DATE: 7/12		SCALE IN FEET: 1"=50'	
DESIGNED BY: R. HARRIS	DRAWN BY: D. CHRISTMAN	REVIEWED BY: B. MOORE	DATE: 2011	JOB NUMBER: 1199-336	ACAD FILE: PNP-Highland2Kendall.dwg
COPYRIGHT 2011 BY ANDERSON-PERRY & ASSOC., INC.					

**RECORD DRAWINGS**

These record drawings have been prepared, in part, on the basis of information compiled and furnished by others. They may contain some discrepancies and omissions, and do not necessarily represent "exact" field conditions. The Owner and the Engineer accept no responsibility for their accuracy.



**BENTON IRRIGATION DISTRICT**  
IRRIGATION SYSTEM IMPROVEMENTS  
PHASE 3A

HIGHLAND RD. TO KENDALL RD. PIPING  
LINE A STA. 1+00 TO STA. 23+00 AND LINE B

SHEET

4

ARCHIVED