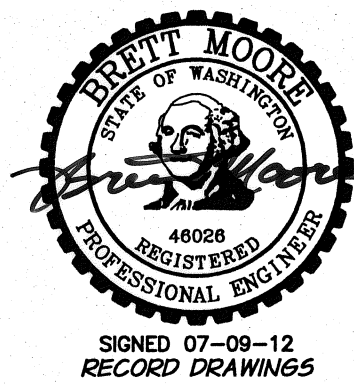
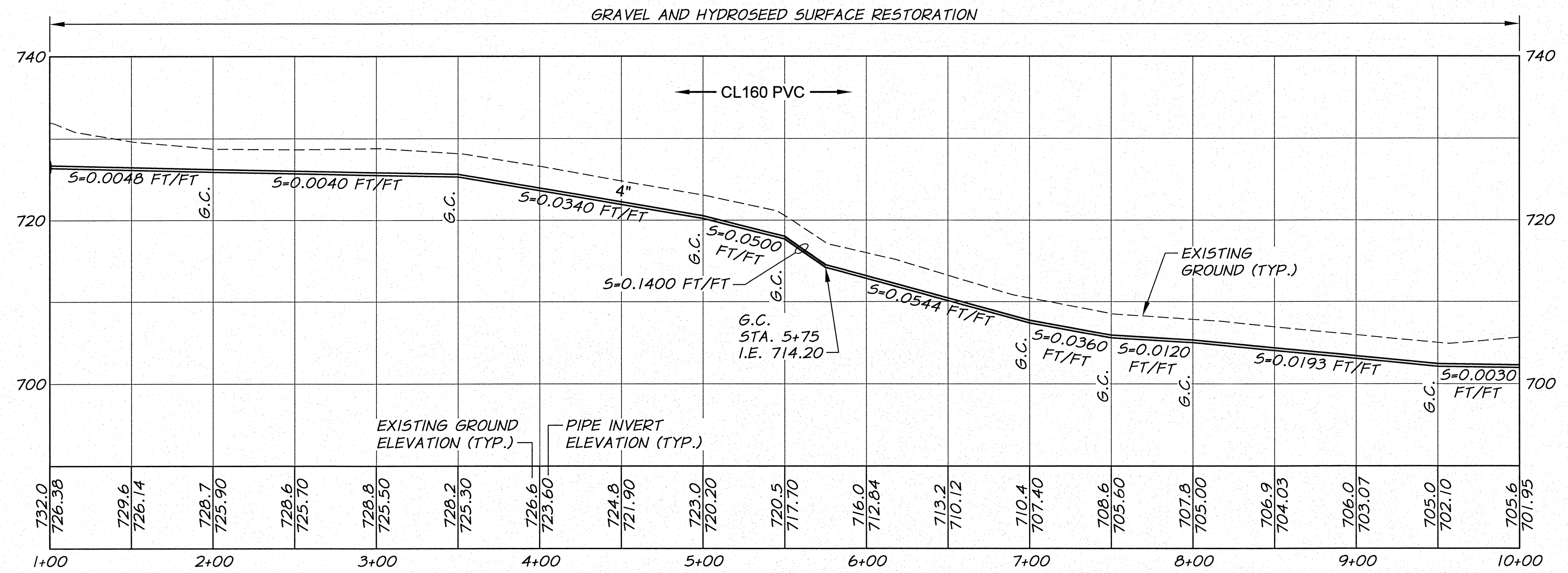
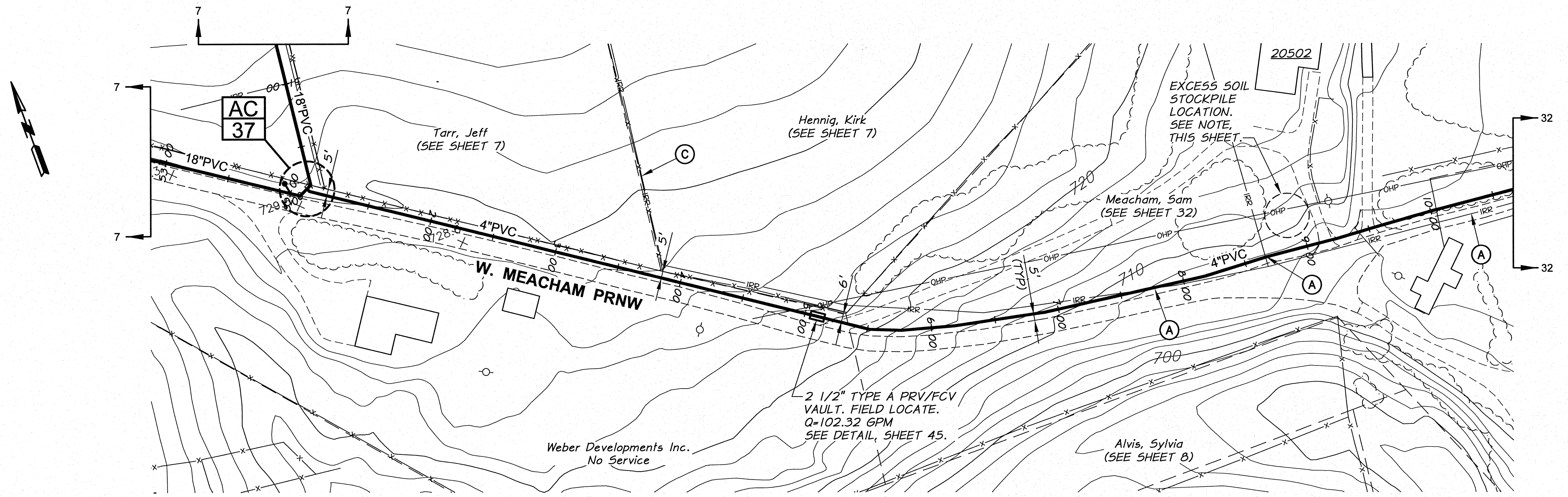


WORK ITEMS

- (A) EXISTING IRRIGATION LINE ALONG OR CROSSING ALIGNMENT. EXACT LOCATION UNKNOWN. REMOVE AND PLUG AS REQUIRED FOR NEW LINE INSTALLATION.
- (C) EXISTING IRRIGATION LINE ALONG ALIGNMENT TO BE ABANDONED. REMOVE AND PLUG AS REQUIRED FOR NEW LINE INSTALLATION.

NOTE

FROM STA. 5+20 TO 15+70 EXCESS SOIL NOT USED FOR BACKFILL SHALL BE STOCKPILED ON SAM MEACHAM PROPERTY AT LOCATION SHOWN ON THIS SHEET.

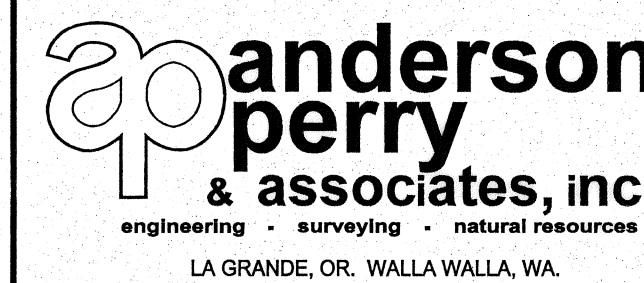


DESIGNED BY	R. HARRIS	XREFS:	TB-BID.dwg
DRAWN BY	E. ARNTZ	JOB NUMBER	1199-336
REVIEWED BY	B. MOORE	DATE	2011
		ACAD FILE:	North_West_B.dwg

HORIZ. SCALE	1"=50'	VERT. SCALE	1"=10"
SCALE IN FEET			
COPYRIGHT 2011 BY ANDERSON-PERRY & ASSOC., INC.			

RECORD DRAWINGS

These record drawings have been prepared, in part, on the basis of information compiled and furnished by others. They may contain some discrepancies and omissions, and do not necessarily represent "exact" field conditions. The Owner and the Engineer accept no responsibility for their accuracy.



**BENTON IRRIGATION DISTRICT
IRRIGATION SYSTEM IMPROVEMENTS
PHASE 2C**

WEST MEACHAM PIPING
STA. 1+00 TO STA. 10+00

SHEET

31