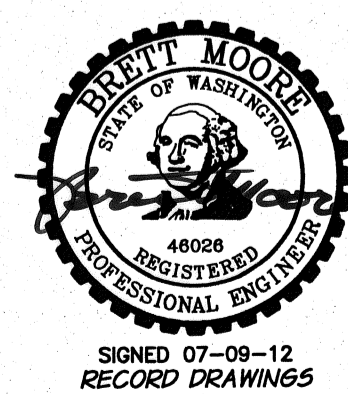
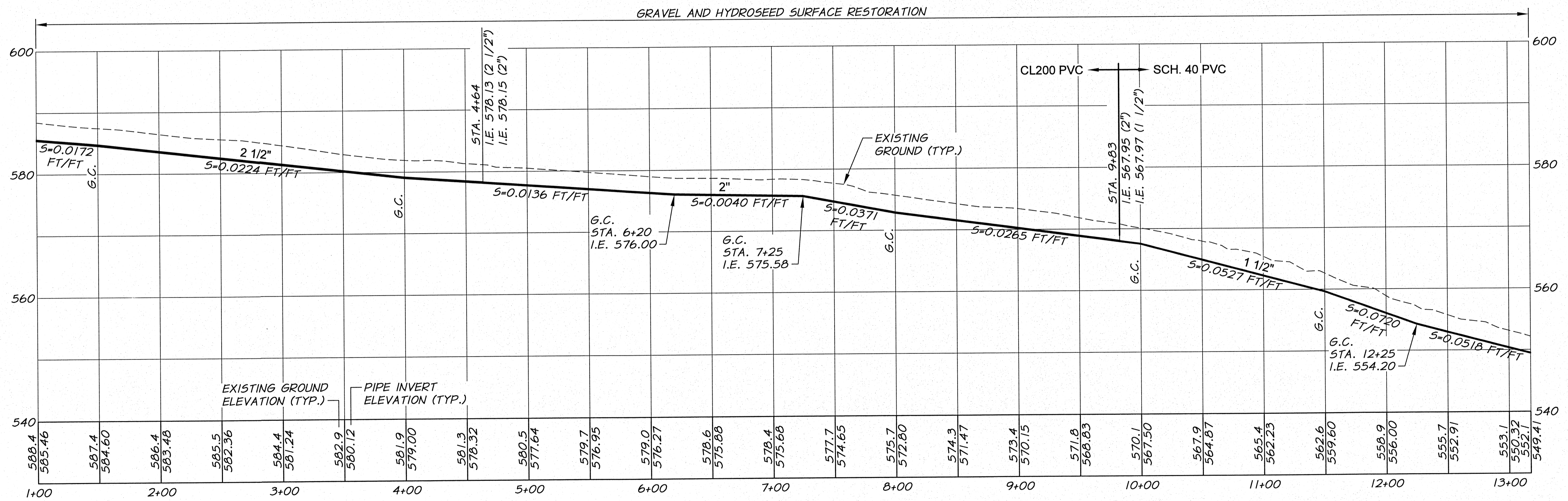


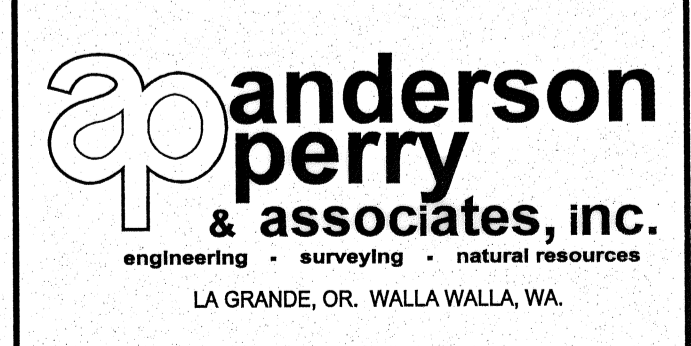
WORK ITEMS

- (A) EXISTING IRRIGATION LINE ALONG OR CROSSING ALIGNMENT. EXACT LOCATION UNKNOWN. REMOVE AND PLUG AS REQUIRED FOR NEW LINE INSTALLATION.
- (C) EXISTING IRRIGATION LINE ALONG ALIGNMENT TO BE ABANDONED. REMOVE AND PLUG AS REQUIRED FOR NEW LINE INSTALLATION.



RECORD DRAWINGS		B.M. 5/12		HORIZ. SCALE 1"=50'		VERT. SCALE 1"=10'	
DESIGNED BY	R. HARRIS	XREFS:	TB-BID.dwg	JOB NUMBER	1199-336	DATE	2011
DRAWN BY	E. ARITZ	ACAD FILE:	North_West_E.dwg	COPYRIGHT 2011 BY ANDERSON-PERRY & ASSOC., INC.			
REVIEWED BY	B. MOORE						

RECORD DRAWINGS
 These record drawings have been prepared, in part, on the basis of information compiled and furnished by others. They may contain some discrepancies and omissions, and do not necessarily represent "exact" field conditions. The Owner and the Engineer accept no responsibility for their accuracy.



BENTON IRRIGATION DISTRICT
 IRRIGATION SYSTEM IMPROVEMENTS
 PHASE 2C
 RAYHILL ROAD PIPING
 STA. 1+00 TO STA. 13+18