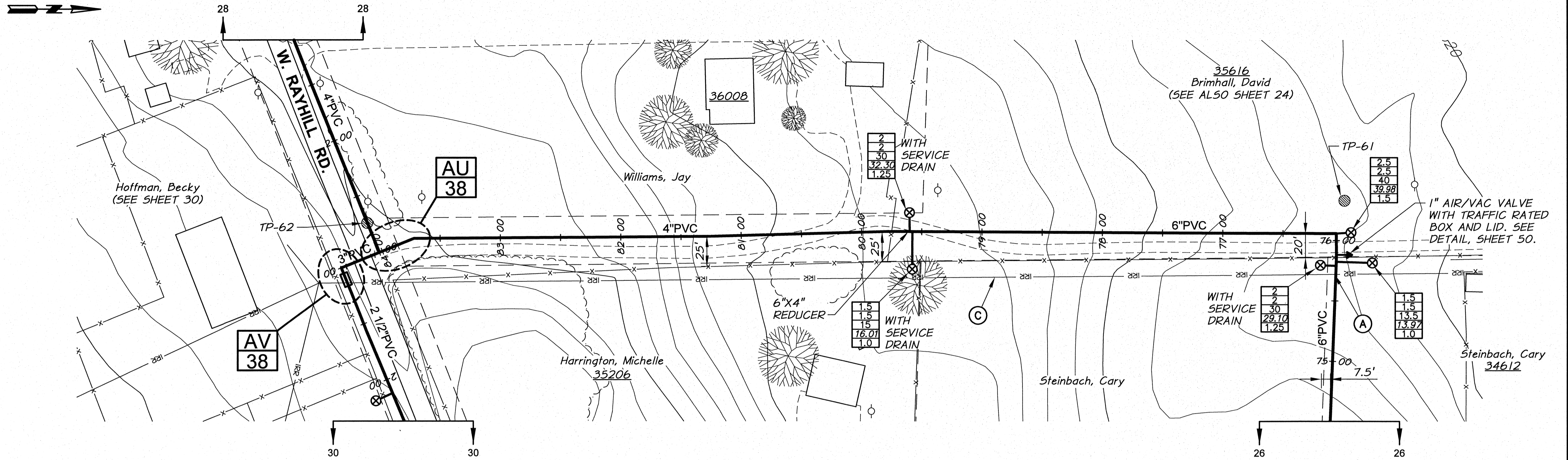
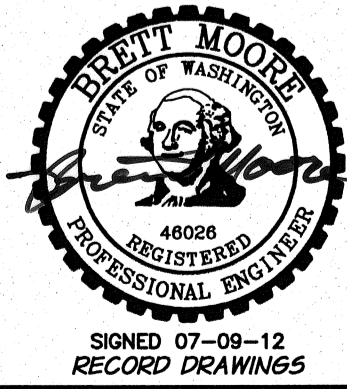
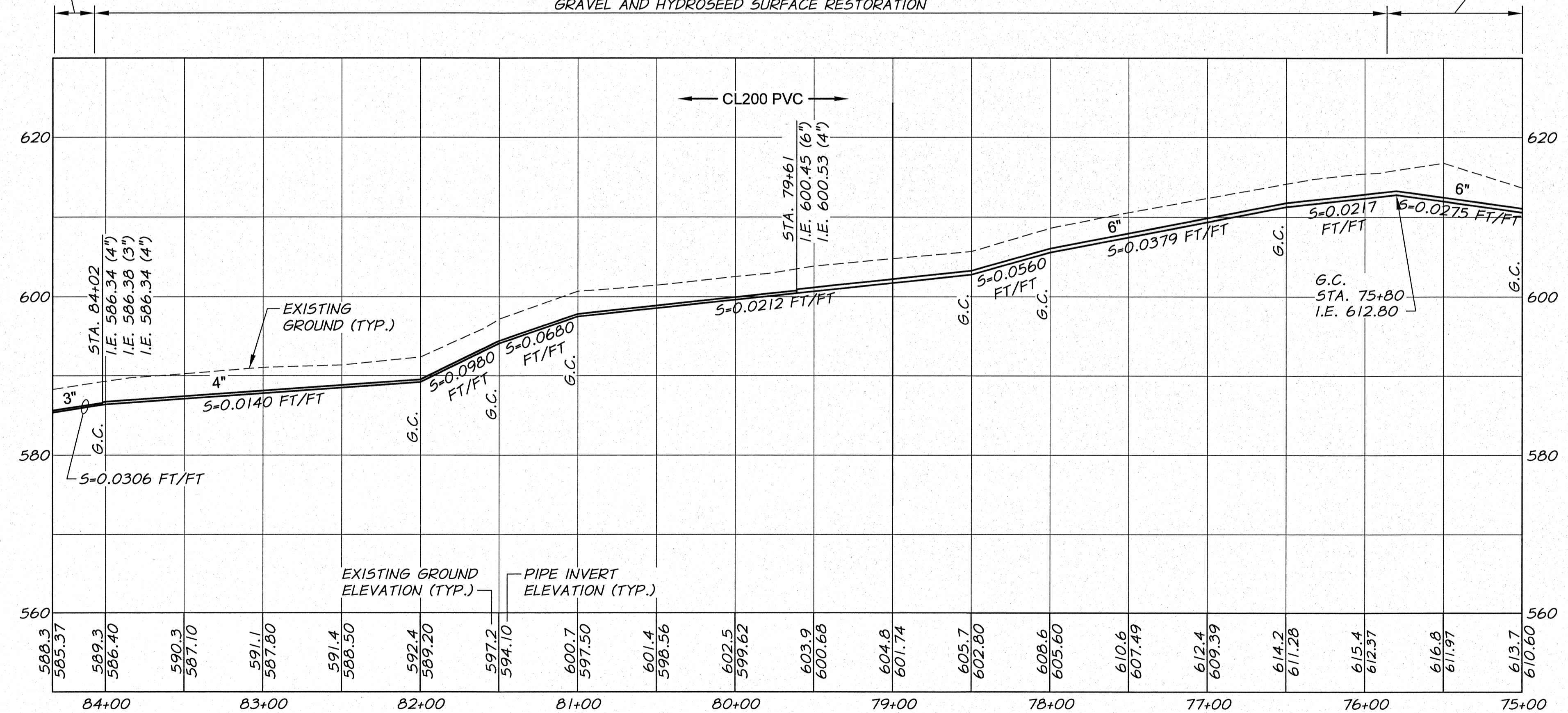


WORK ITEMS

- (A) EXISTING IRRIGATION LINE ALONG OR CROSSING ALIGNMENT. EXACT LOCATION UNKNOWN. REMOVE AND PLUG AS REQUIRED FOR NEW LINE INSTALLATION.
- (C) EXISTING IRRIGATION LINE ALONG ALIGNMENT TO BE ABANDONED. REMOVE AND PLUG AS REQUIRED FOR NEW LINE INSTALLATION.

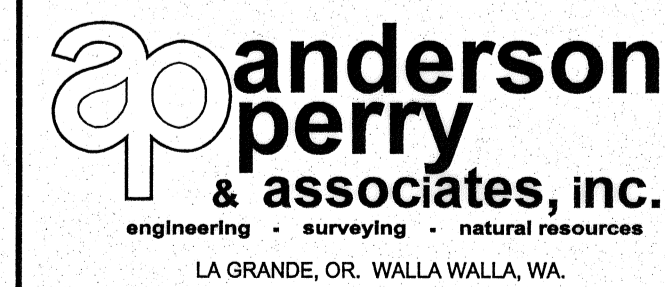


ASPHALT AND HYDROSEED SURFACE RESTORATION GRAVEL AND HYDROSEED SURFACE RESTORATION HYDROSEED SURFACE RESTORATION



DESIGNED BY	R. HARRIS	DATE	2011
DRAWN BY	E. ARNTZ	DATE	2011
REVIEWED BY	B. MOORE	DATE	2011
XREFS: TB-BID.dwg		JOB NUMBER: 1199-336	
		ACAD FILE: North_West_E.dwg	
COPYRIGHT 2011 BY ANDERSON-PERRY & ASSOC., INC.			

RECORD DRAWINGS
 These record drawings have been prepared, in part, on the basis of information compiled and furnished by others. They may contain some discrepancies and omissions, and do not necessarily represent "exact" field conditions. The Owner and the Engineer accept no responsibility for their accuracy.



BENTON IRRIGATION DISTRICT
 IRRIGATION SYSTEM IMPROVEMENTS
 PHASE 2C
 KNOX ROAD TO RAYHILL ROAD PIPING
 STA. 75+00 TO STA. 84+34