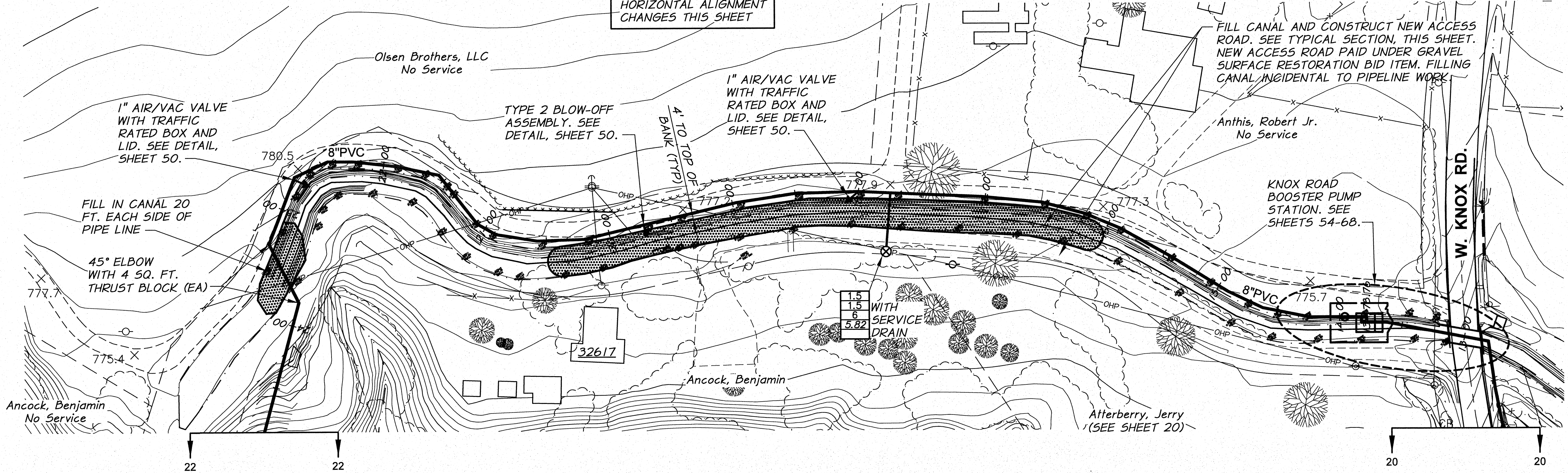




USE FITTINGS AS
REQUIRED FOR
HORIZONTAL ALIGNMENT
CHANGES THIS SHEET



NEW ACCESS ROAD
(TO BE FIELD
DETERMINED)

FINISH GRADE AS
REQUIRED BY
THE ENGINEER

CANAL

12'

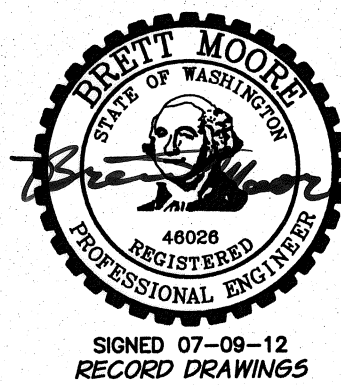
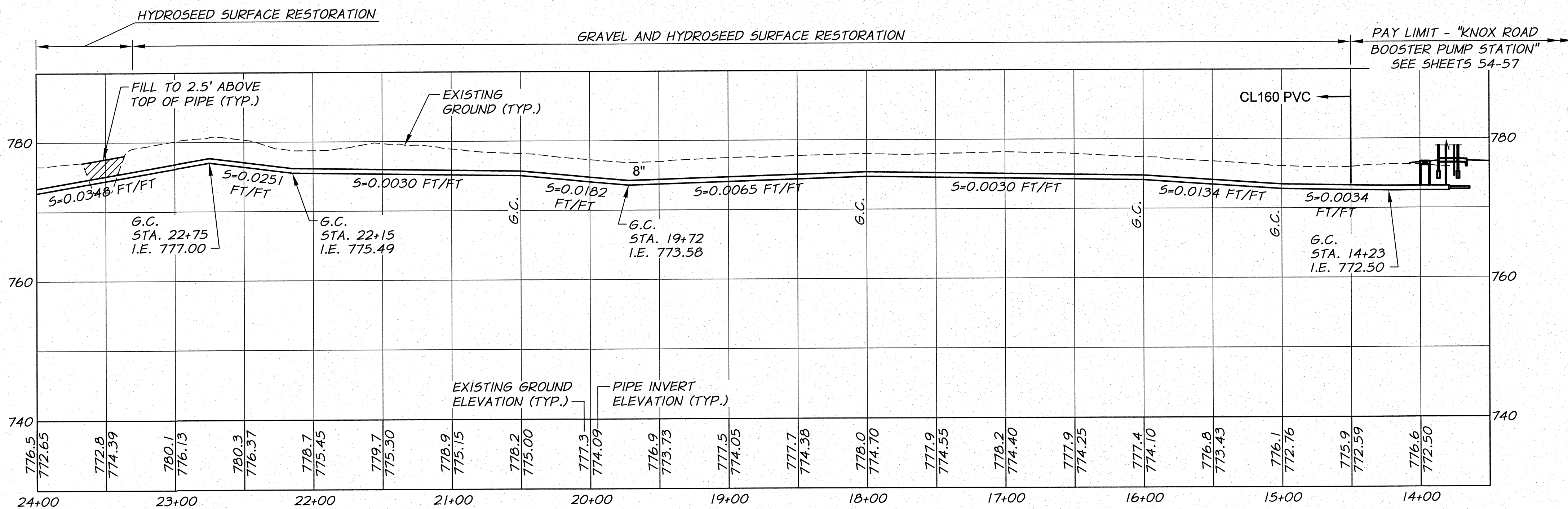
8" PVC

EXISTING
GROUND

GENERAL
BACKFILL

TYPICAL SECTION

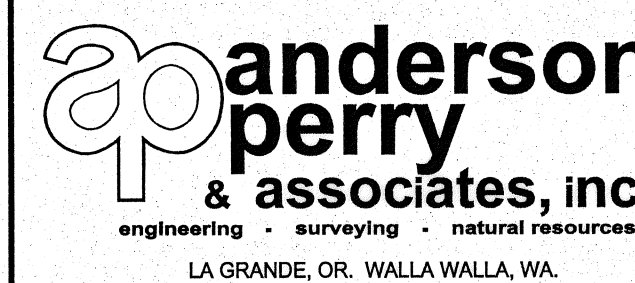
STA. 16+00 TO 20+50
N.T.S.



REVISION	BY	DATE	HORIZ. SCALE 1"=50'	VERT. SCALE 1"=10'
DESIGNED BY R. HARRIS	XREFS: TB-BID.dwg		JOB NUMBER 1199-336	DATE 2011
DRAWN BY E. ARNTZ			ACAD FILE: North_West _C.dwg	
REVIEWED BY B. MOORE			COPYRIGHT 2011 BY ANDERSON-PERRY & ASSOC., INC.	

RECORD DRAWINGS

These record drawings have been prepared, in part, on the basis of information compiled and furnished by others. They may contain some discrepancies and omissions, and do not necessarily represent "exact" field conditions. The Owner and the Engineer accept no responsibility for their accuracy.



BENTON IRRIGATION DISTRICT
IRRIGATION SYSTEM IMPROVEMENTS
PHASE 2C

KNOX ROAD TO RAYHILL ROAD PIPING
KNOX ROAD PUMP STATION TO STA. 24+00

SHEET

21

ARCHIVED