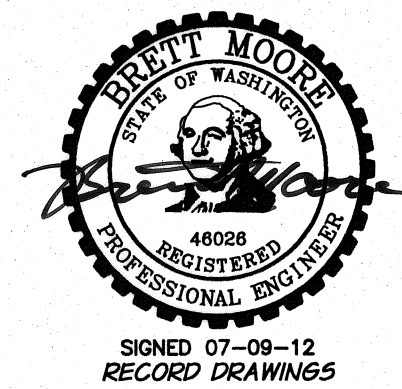
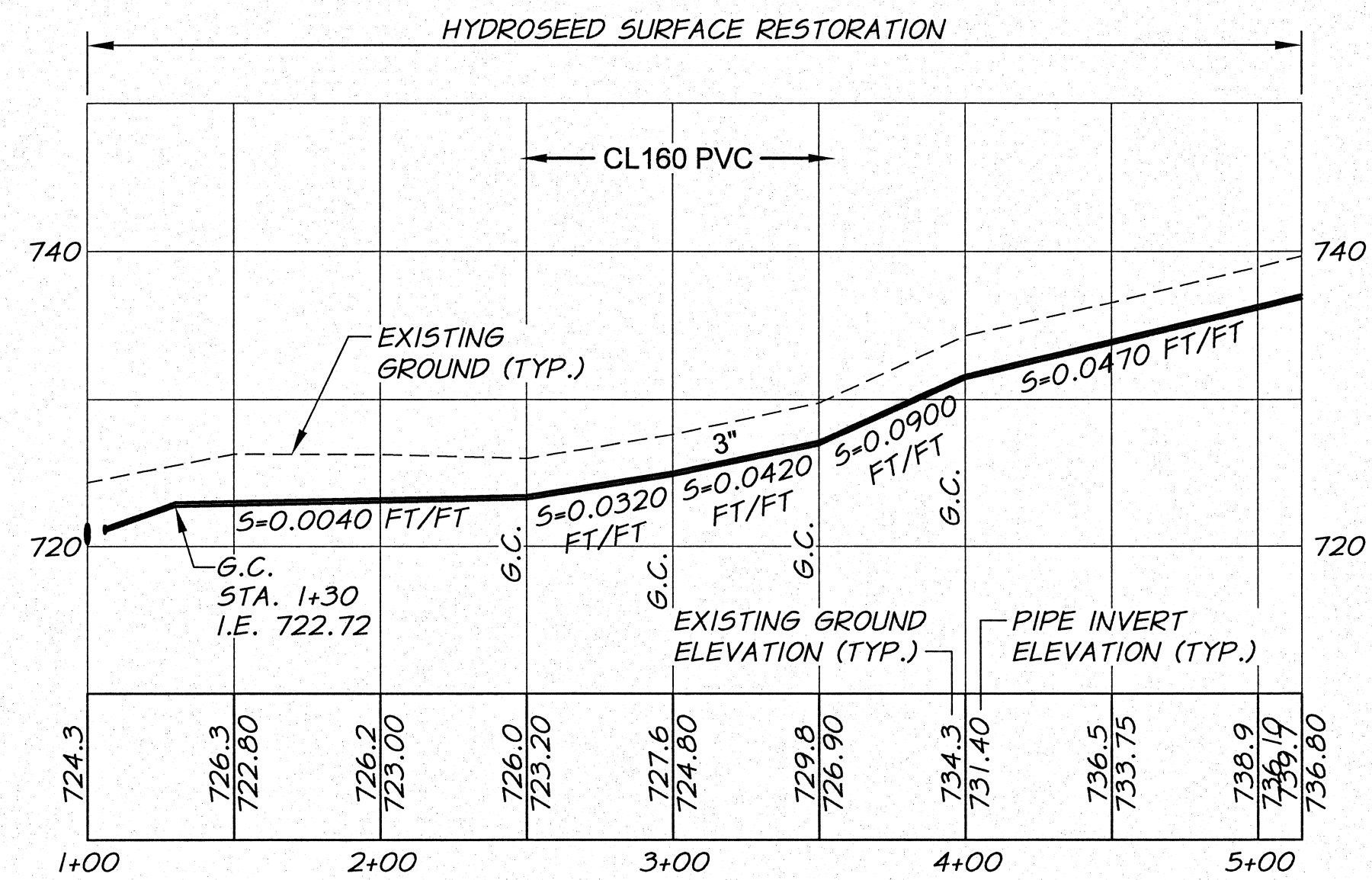
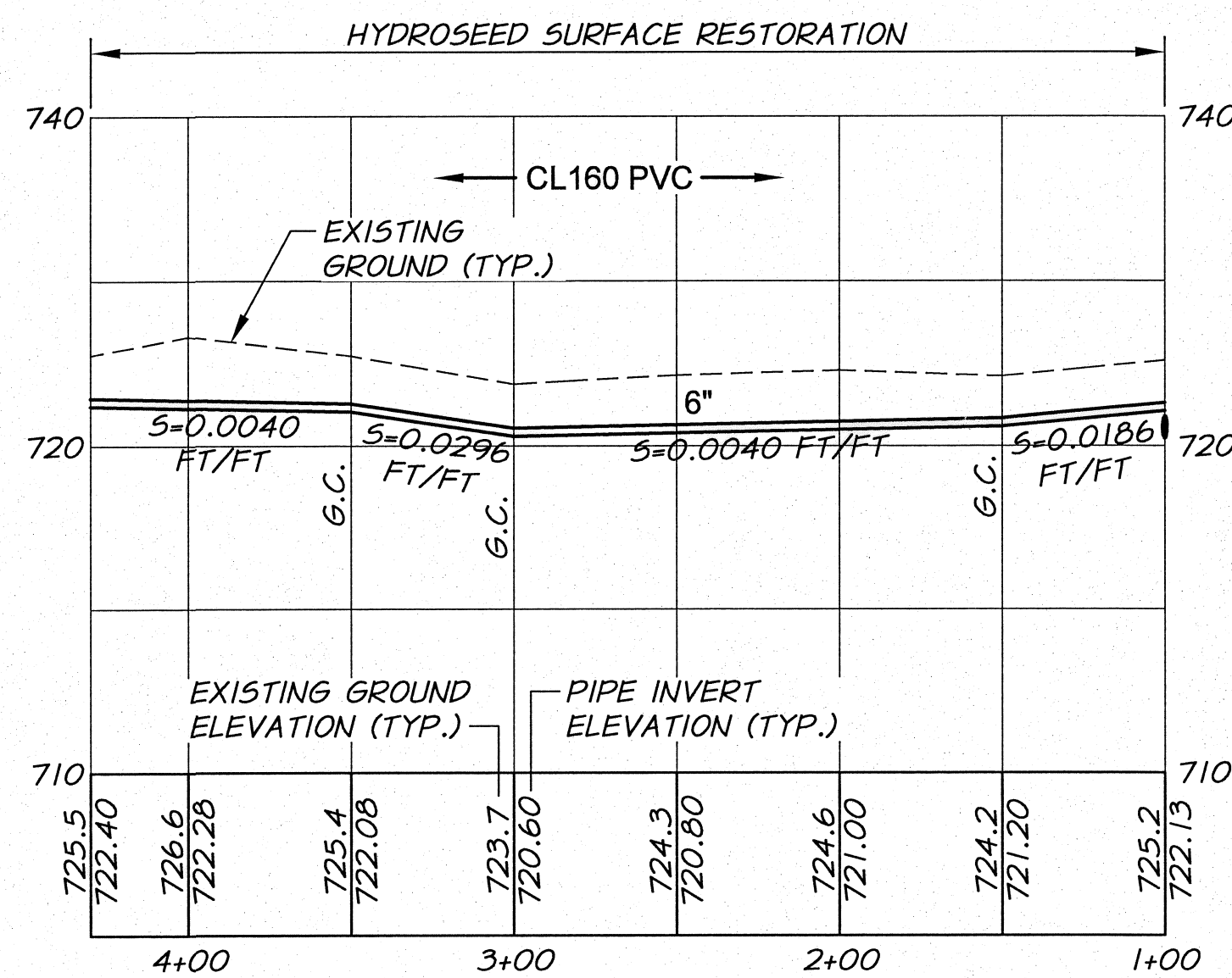
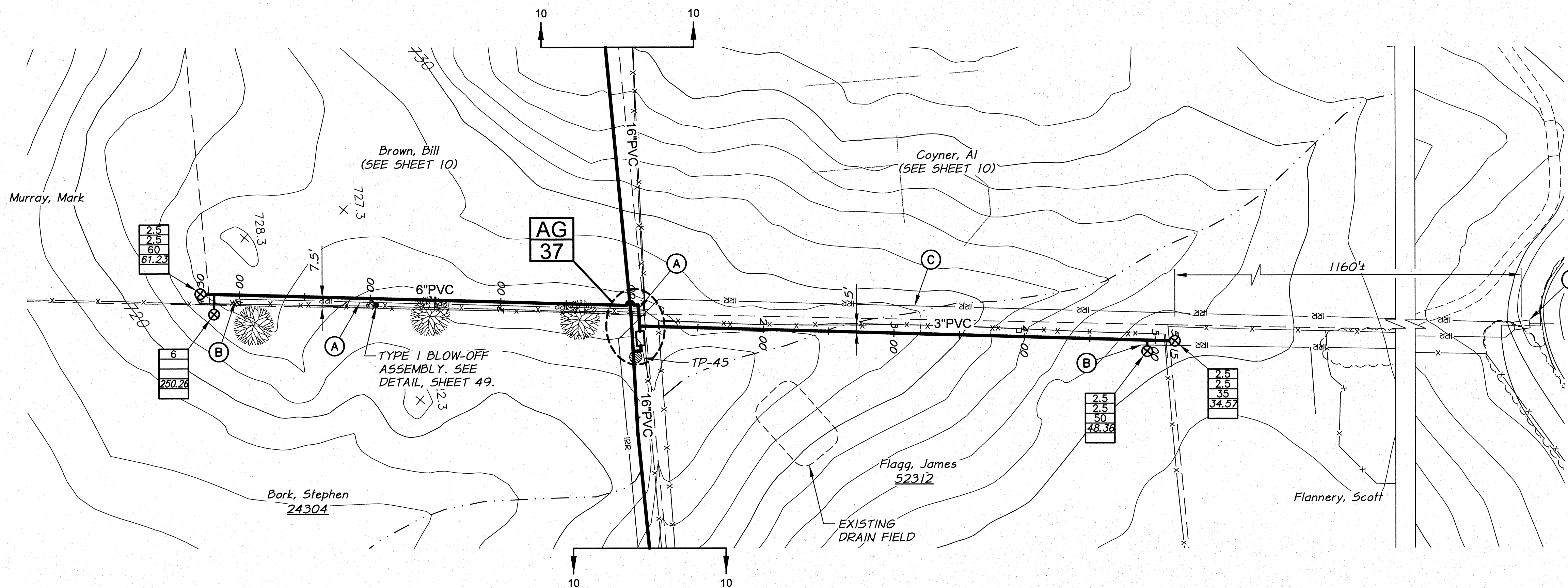


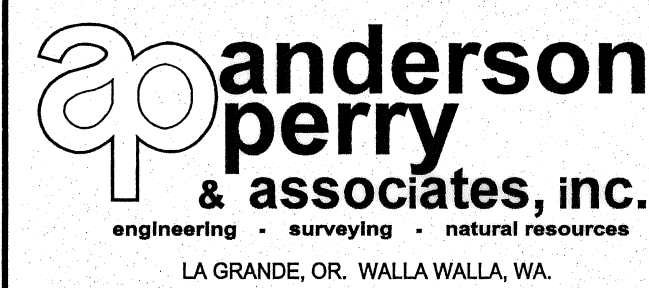
**WORK ITEMS**

- (A) EXISTING IRRIGATION LINE ALONG OR CROSSING ALIGNMENT. EXACT LOCATION UNKNOWN. REMOVE AND PLUG AS REQUIRED FOR NEW LINE INSTALLATION.
- (B) EXISTING IRRIGATION CONTROL STRUCTURE TO BE REMOVED.
- (C) EXISTING IRRIGATION LINE ALONG ALIGNMENT TO BE ABANDONED. REMOVE AND PLUG AS REQUIRED FOR NEW LINE INSTALLATION.



DESIGNED BY	R. HARRIS	DATE	2011
DRAWN BY	E. ARNTZ	DATE	2011
REVIEWED BY	B. MOORE	DATE	2011
PROJECT	BENTON IRRIGATION DISTRICT IRRIGATION SYSTEM IMPROVEMENTS PHASE 2C		
FILE NAME	North_West_B.dwg		
SCALE	1" = 50'		

**RECORD DRAWINGS**  
 These record drawings have been prepared, in part, on the basis of information compiled and furnished by others. They may contain some discrepancies and omissions, and do not necessarily represent "exact" field conditions. The Owner and the Engineer accept no responsibility for their accuracy.



**BENTON IRRIGATION DISTRICT**  
 IRRIGATION SYSTEM IMPROVEMENTS  
 PHASE 2C  
 EAST ROZA TO KNOX ROAD PIPING  
 STA. 1+00 TO 4+30 AND STA. 1+00 TO 5+15