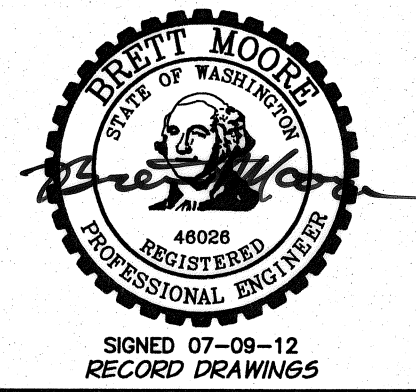
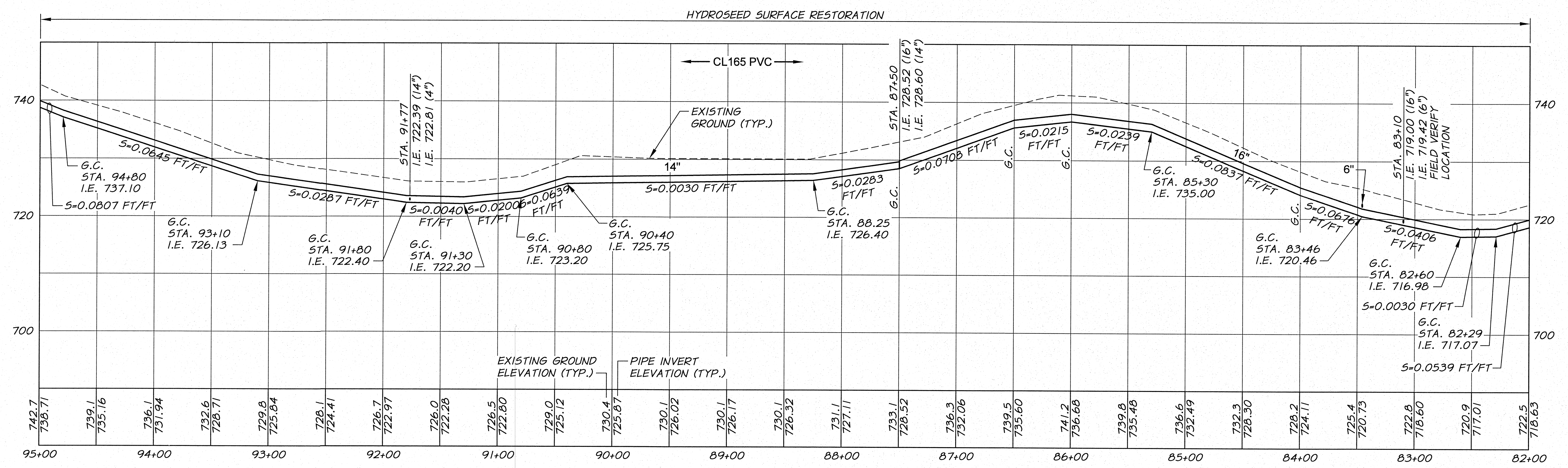


WORK ITEMS

(A) EXISTING IRRIGATION LINE ALONG OR CROSSING ALIGNMENT. EXACT LOCATION UNKNOWN. REMOVE AND PLUG AS REQUIRED FOR NEW LINE INSTALLATION.

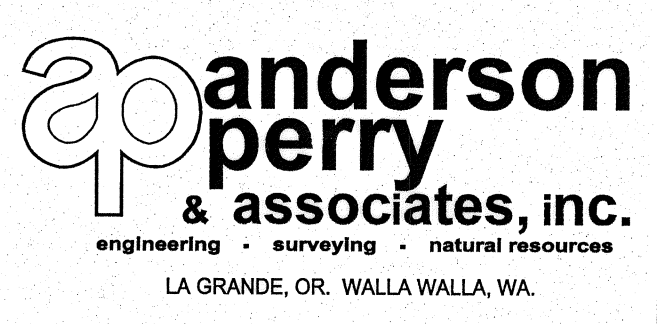


DESIGNED BY	R. HARRIS	DATE	
DRAWN BY	E. ARNTZ	DATE	2011
REVIEWED BY	B. MOORE	DATE	

JOB NUMBER	1199-336	DATE	2011
ACAD FILE	North_West_B.dwg		
COPYRIGHT 2011 BY ANDERSON-PERRY & ASSOC., INC.			

RECORD DRAWINGS

These record drawings have been prepared, in part, on the basis of information compiled and furnished by others. They may contain some discrepancies and omissions, and do not necessarily represent "exact" field conditions. The Owner and the Engineer accept no responsibility for their accuracy.



BENTON IRRIGATION DISTRICT
IRRIGATION SYSTEM IMPROVEMENTS
PHASE 2C

EAST ROZA TO KNOX ROAD PIPING
 STA. 82+00 TO STA. 95+00

SHEET
10