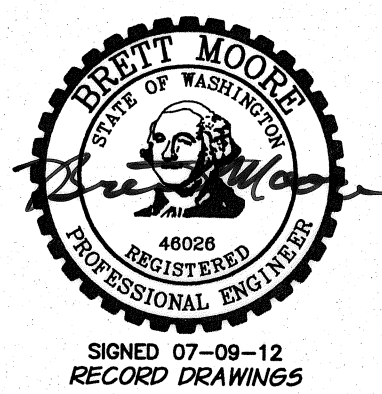
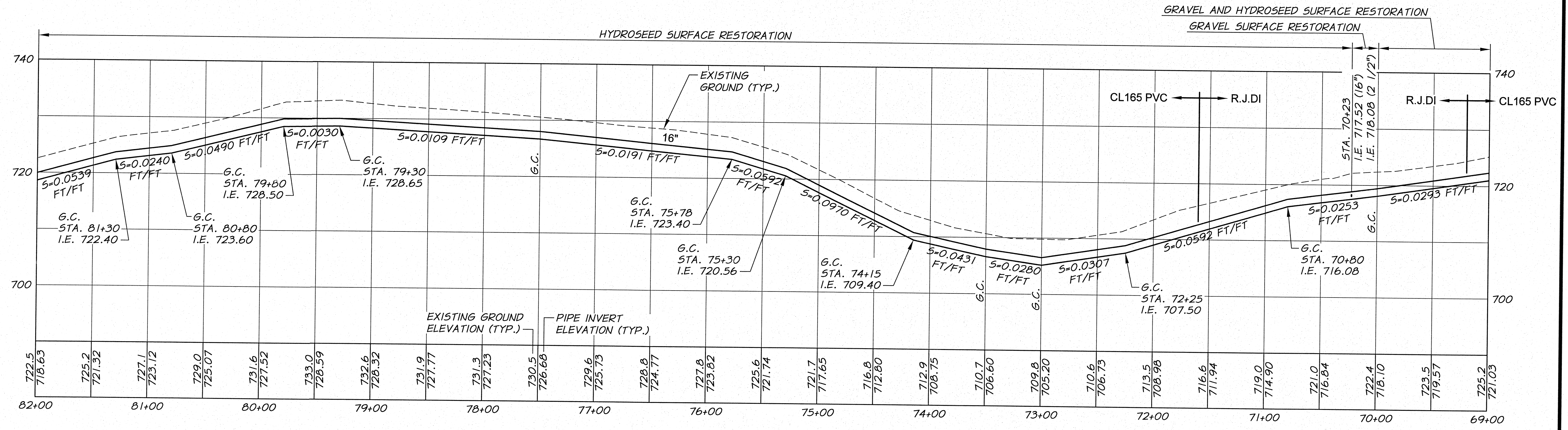


**WORK ITEMS**

(A) EXISTING IRRIGATION LINE ALONG OR CROSSING ALIGNMENT. EXACT LOCATION UNKNOWN. REMOVE AND PLUG AS REQUIRED FOR NEW LINE INSTALLATION.

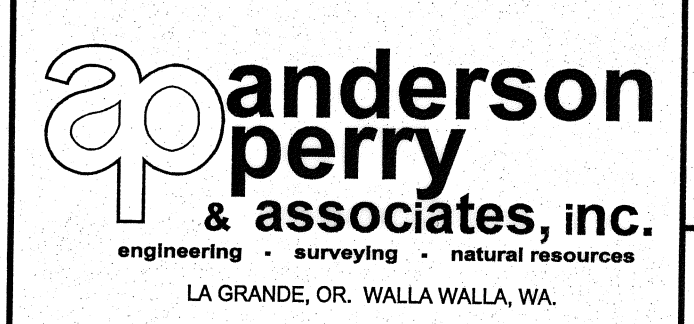


RECORD DRAWINGS		B.M.	5/12
DESIGNED BY	R. HARRIS	BY	DATE
DRAWN BY	E. ARNTZ	XREFS:	TB-BID.dwg
REVIEWED BY	B. MOORE	JOB NUMBER	1199-336
		ACAD FILE:	North_West_B.dwg
		DATE	2011

HORIZ. SCALE 1"=50' VERT. SCALE 1"=10' COPYRIGHT 2011 BY ANDERSON-PERRY & ASSOC., INC.	

**RECORD DRAWINGS**

These record drawings have been prepared, in part, on the basis of information compiled and furnished by others. They may contain some discrepancies and omissions, and do not necessarily represent "exact" field conditions. The Owner and the Engineer accept no responsibility for their accuracy.



**BENTON IRRIGATION DISTRICT**  
 IRRIGATION SYSTEM IMPROVEMENTS  
 PHASE 2C

**EAST ROZA TO KNOX ROAD PIPING**  
 STA. 69+00 TO STA. 82+00

SHEET  
**9**