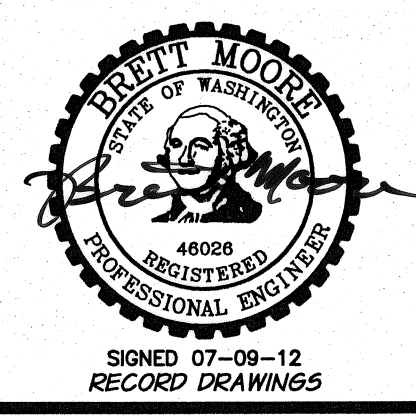
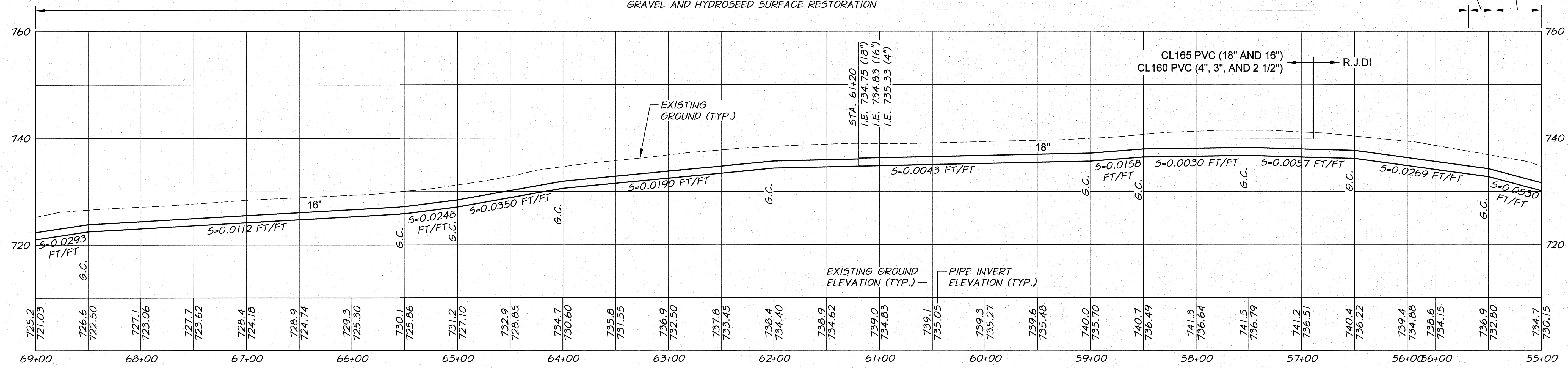
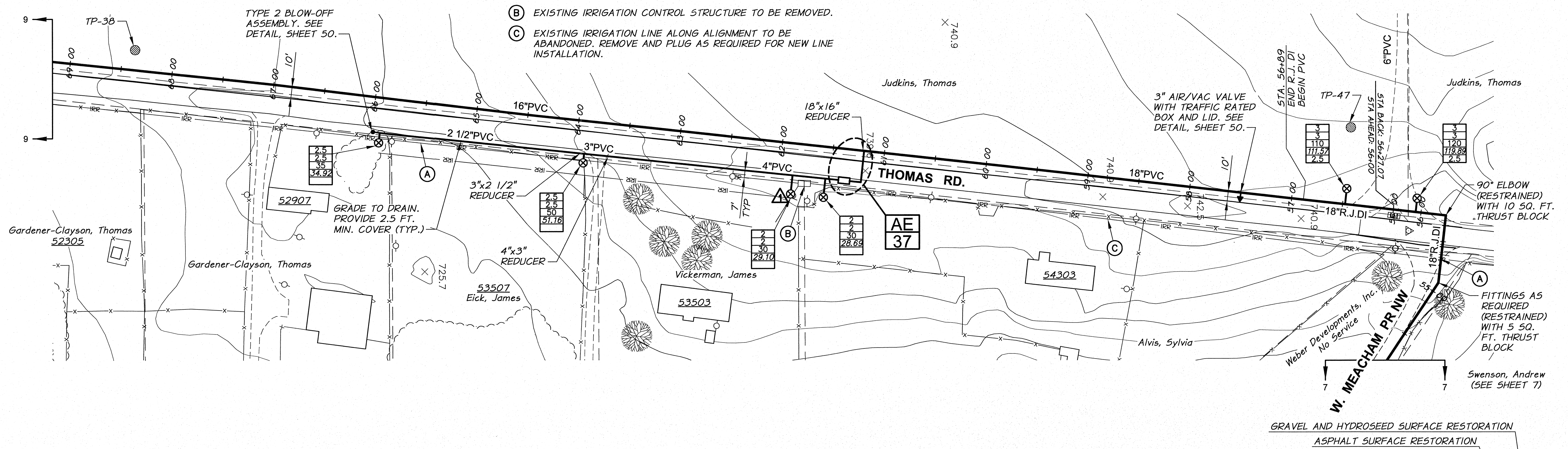


WORK ITEMS

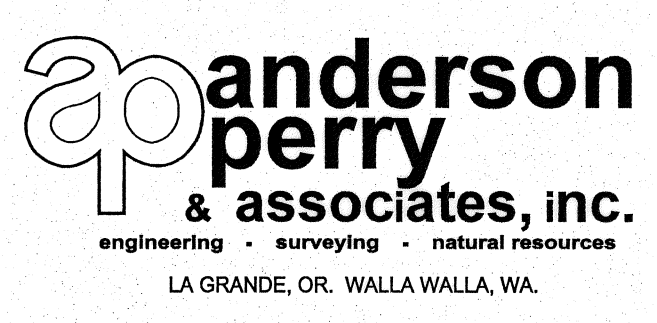
- (A) EXISTING IRRIGATION LINE ALONG OR CROSSING ALIGNMENT. EXACT LOCATION UNKNOWN. REMOVE AND PLUG AS REQUIRED FOR NEW LINE INSTALLATION.
- (B) EXISTING IRRIGATION CONTROL STRUCTURE TO BE REMOVED.
- (C) EXISTING IRRIGATION LINE ALONG ALIGNMENT TO BE ABANDONED. REMOVE AND PLUG AS REQUIRED FOR NEW LINE INSTALLATION.



RECORD DRAWINGS		BY	B.M.	DATE	5/12
DESIGNED BY	R. HARRIS	XREFS:	TB-BID.dwg		
DRAWN BY	E. ARNTZ				
REVIEWED BY	B. MOORE				

HORIZ. SCALE	1" = 50'
VERT. SCALE	1" = 10'
JOB NUMBER	1199-336
DATE	2011
ACAD FILE	North_West_B.dwg
COPYRIGHT 2011 BY ANDERSON-PERRY & ASSOC., INC.	

RECORD DRAWINGS
 These record drawings have been prepared, in part, on the basis of information compiled and furnished by others. They may contain some discrepancies and omissions, and do not necessarily represent "exact" field conditions. The Owner and the Engineer accept no responsibility for their accuracy.



BENTON IRRIGATION DISTRICT
 IRRIGATION SYSTEM IMPROVEMENTS
 PHASE 2C
 EAST ROZA TO KNOX ROAD PIPING
 STA. 55+00 TO STA. 69+00

SHEET
8