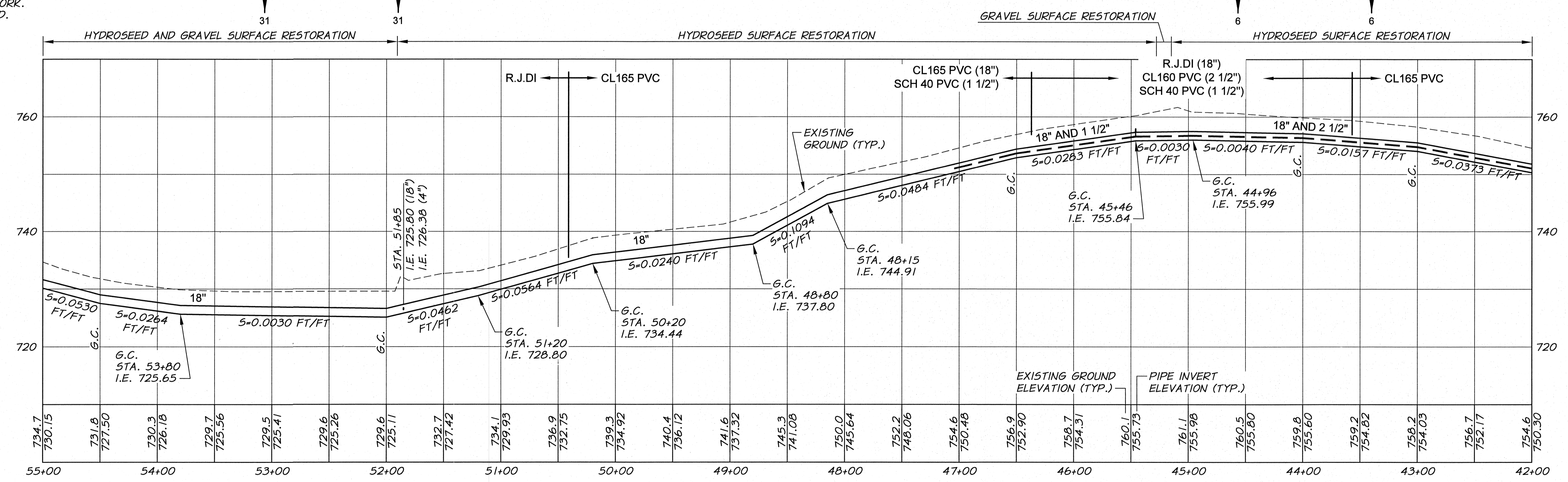
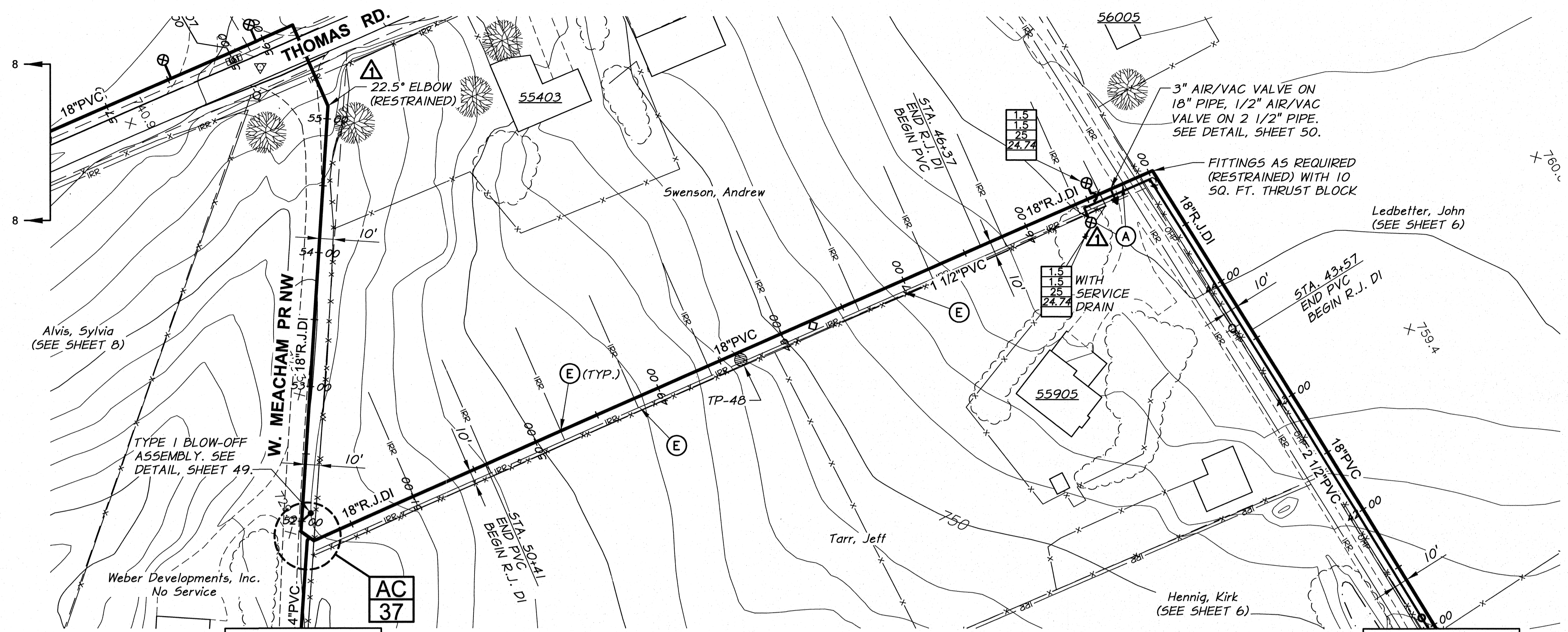


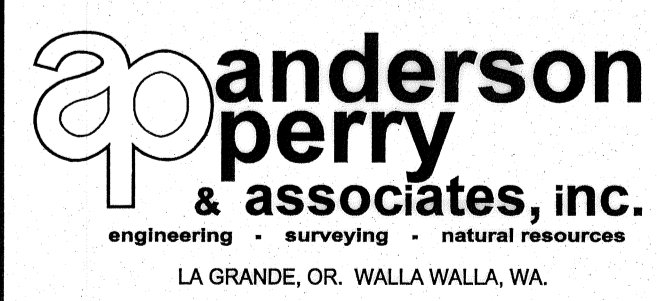
WORK ITEMS

- (A) EXISTING IRRIGATION LINE ALONG OR CROSSING ALIGNMENT. EXACT LOCATION UNKNOWN. REMOVE AND PLUG AS REQUIRED FOR NEW LINE INSTALLATION.
- (E) EXISTING IRRIGATION LINE ALONG OR CROSSING ALIGNMENT TO REMAIN. EXACT LOCATION UNKNOWN. POTHOLE PRIOR TO CONSTRUCTION. FOR MAIN LINE CROSSING CONFLICT, LOWER EXISTING LINE UNDER NEW LINE AS REQUIRED. SEE DETAIL, SHEET 51. FOR MAIN LINE PARALLEL LINE CONFLICT, ADJUST LOCATION OF NEW MAIN LINE AS REQUESTED BY THE ENGINEER TO PROVIDE CLEARANCE BETWEEN LINES. FOR NEW SERVICE LINE CROSSING EXISTING LINE, CONSTRUCT NEW SERVICE LINE UNDER THE EXISTING LINE, UNLESS OTHERWISE APPROVED BY THE ENGINEER. WORK TO BE INCIDENTAL TO SERVICE WORK. USE FITTINGS AS REQUIRED.



RECORD DRAWINGS		DATE	5/12
DESIGNED BY	R. HARRIS	DATE	2011
DRAWN BY	E. ARNTZ	DATE	2011
REVIEWED BY	B. MOORE	DATE	2011
XREFS: TB-BID.dwg		ACAD FILE: North_West_B.dwg	
COPYRIGHT 2011 BY ANDERSON-PERRY & ASSOC., INC.			

RECORD DRAWINGS
 These record drawings have been prepared, in part, on the basis of information compiled and furnished by others. They may contain some discrepancies and omissions, and do not necessarily represent "exact" field conditions. The Owner and the Engineer accept no responsibility for their accuracy.



BENTON IRRIGATION DISTRICT
 IRRIGATION SYSTEM IMPROVEMENTS
 PHASE 2C
 EAST ROZA TO KNOX ROAD PIPING
 STA. 42+00 TO STA. 55+00