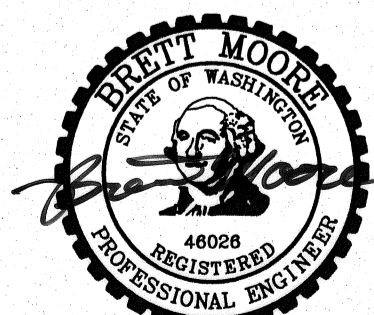
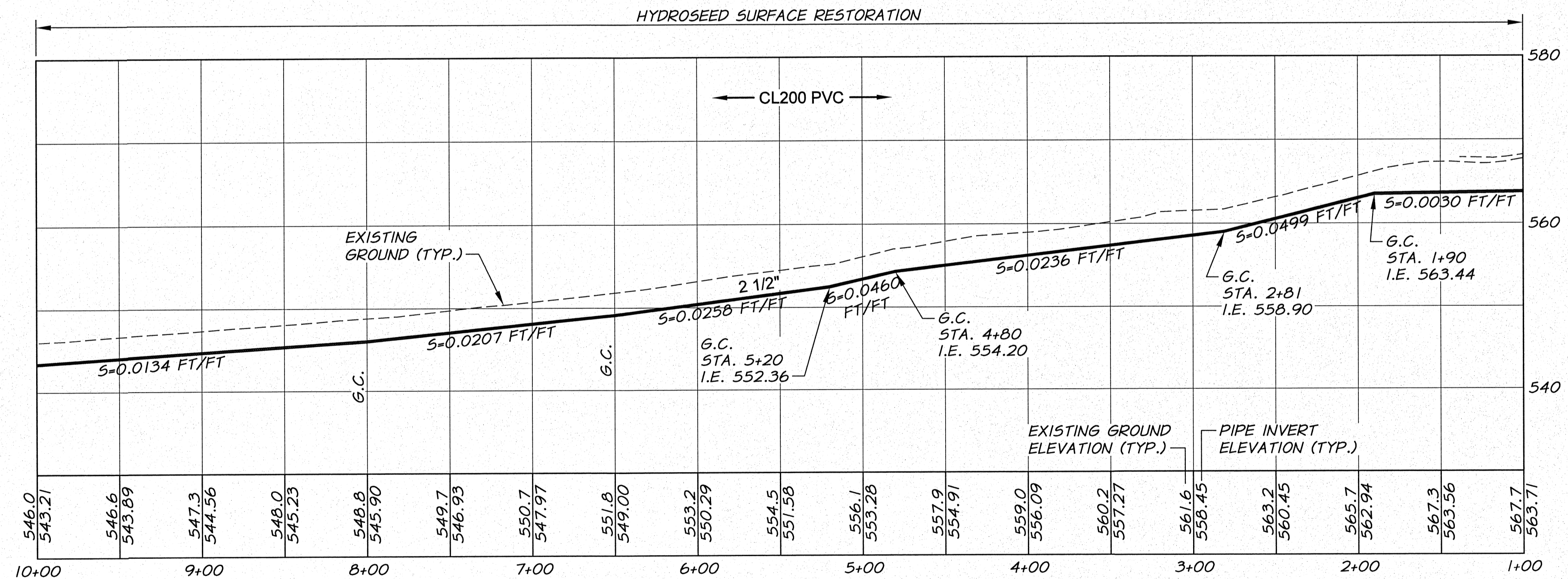
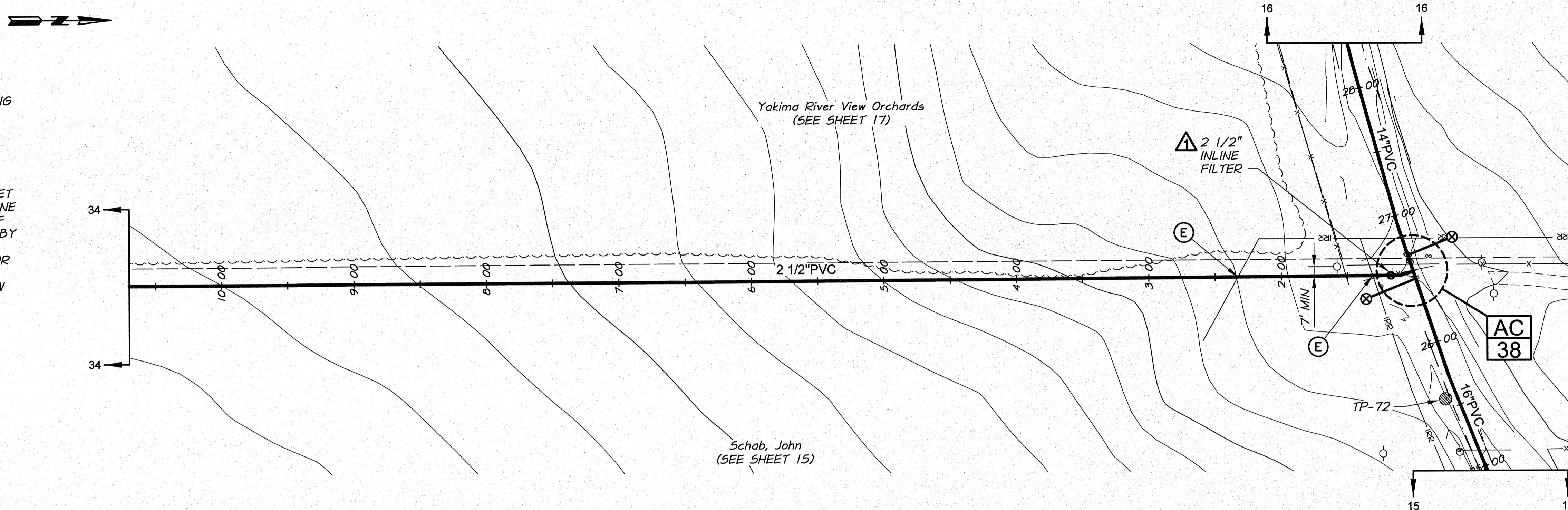


WORK ITEMS

- (E) EXISTING IRRIGATION LINE ALONG OR CROSSING ALIGNMENT TO REMAIN. EXACT LOCATION UNKNOWN. POTHOLE PRIOR TO CONSTRUCTION. FOR MAIN LINE CROSSING CONFLICT, LOWER EXISTING LINE UNDER NEW LINE AS REQUIRED. SEE DETAIL, SHEET 51. FOR MAIN LINE PARALLEL LINE CONFLICT, ADJUST LOCATION OF NEW MAIN LINE AS REQUESTED BY THE ENGINEER TO PROVIDE CLEARANCE BETWEEN LINES. FOR NEW SERVICE LINE CROSSING EXISTING LINE, CONSTRUCT NEW SERVICE LINE UNDER THE EXISTING LINE, UNLESS OTHERWISE APPROVED BY THE ENGINEER. WORK TO BE INCIDENTAL TO SERVICE WORK. USE FITTINGS AS REQUIRED.

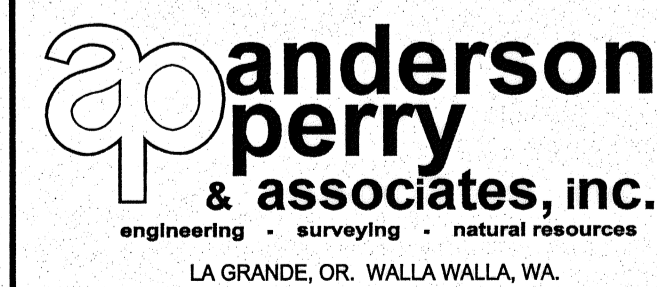


SIGNED 06-04-12
RECORD DRAWINGS

RECORD DRAWINGS		BY	B.M.	5/12	HORIZ. SCALE	1"=50'	VERT. SCALE	1"=10'
DESIGNED BY	R. HARRIS	DATE	XREFS: TB-BID.dwg		JOB NUMBER	1199-336	DATE	2011
DRAWN BY	E. ARNTZ	ACAD FILE:		West_Main_F.dwg		COPYRIGHT 2011 BY ANDERSON-PERRY & ASSOC., INC.		
REVIEWED BY	B. MOORE							

RECORD DRAWINGS

These record drawings have been prepared, in part, on the basis of information compiled and furnished by others. They may contain some discrepancies and omissions, and do not necessarily represent "exact" field conditions. The Owner and the Engineer accept no responsibility for their accuracy.



BENTON IRRIGATION DISTRICT
IRRIGATION SYSTEM IMPROVEMENTS
PHASE 2B

BRANCH LINE PIPING
STA. 1+00 TO STA. 10+00

SHEET

33

ARCHIVED