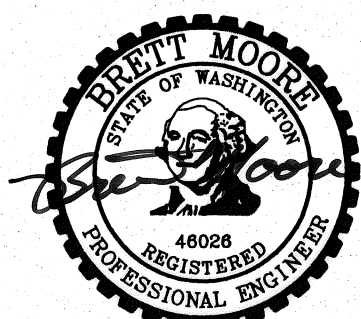
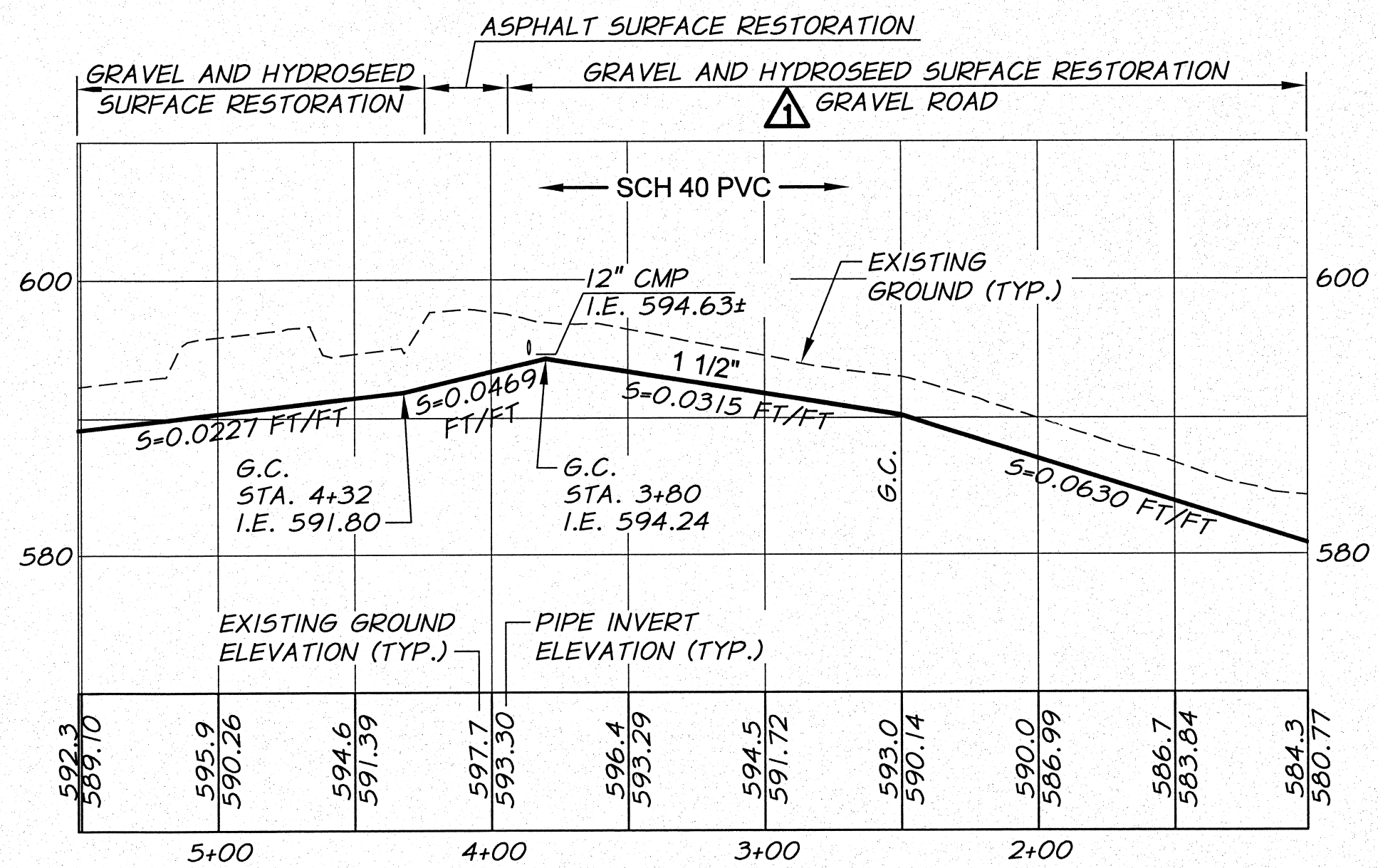
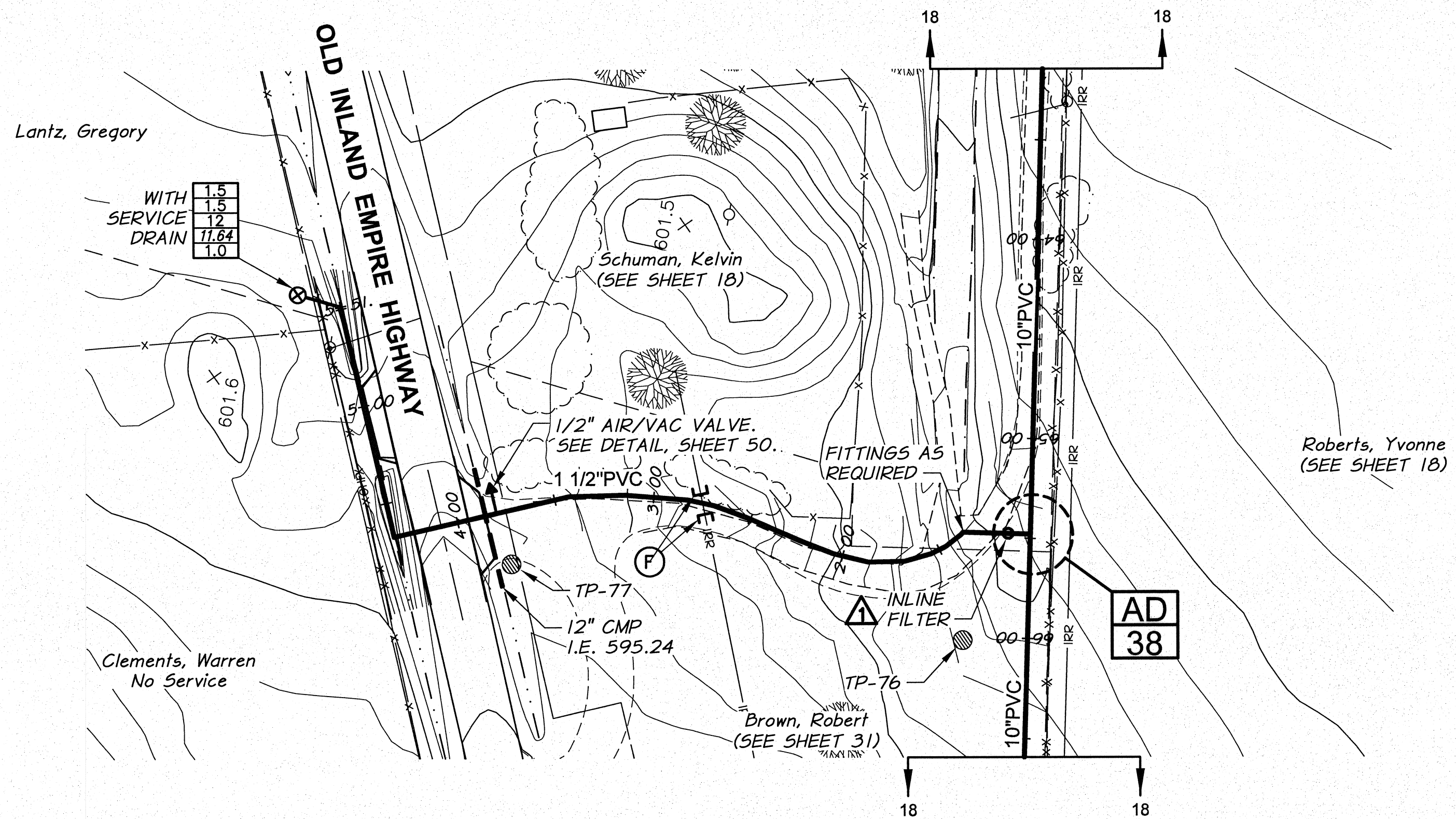


WORK ITEMS

- (A) EXISTING IRRIGATION LINE ALONG OR CROSSING ALIGNMENT. EXACT LOCATION UNKNOWN. REMOVE AND PLUG AS REQUIRED FOR NEW LINE INSTALLATION. INCIDENTAL TO SERVICE WORK. USE FITTINGS AS REQUIRED.
- (F) CUT AND CAP EXISTING IRRIGATION THIS LOCATION ONLY. PROVIDE THRUST BLOCKING FOR CAPS AS REQUIRED BY ENGINEER. (APPROX 2 SQ. FT. EACH)



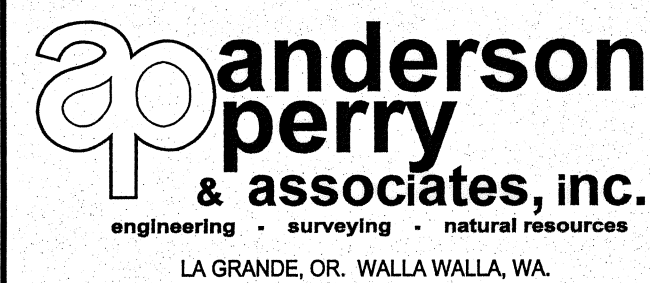
SIGNED 06-04-12
RECORD DRAWINGS

REVISION		BY	DATE
RECORD DRAWINGS		B.M.	5/12
DESIGNED BY	XREFS: TB-BID.dwg		
DRAWN BY	E. ARNTZ		
REVIEWED BY	B. MOORE		

HORIZ. SCALE 1"=50'		VERT. SCALE 1"=10'	
JOB NUMBER 1199-336		DATE 2011	
ACAD FILE: West_Main _F.dwg		COPYRIGHT 2011 BY ANDERSON-PERRY & ASSOC., INC.	

RECORD DRAWINGS

These record drawings have been prepared, in part, on the basis of information compiled and furnished by others. They may contain some discrepancies and omissions, and do not necessarily represent "exact" field conditions. The Owner and the Engineer accept no responsibility for their accuracy.



**BENTON IRRIGATION DISTRICT
IRRIGATION SYSTEM IMPROVEMENTS
PHASE 2B**

BRANCH LINE PIPING
STA. 1+00 TO STA. 5+51

SHEET

32

ARCHIVED