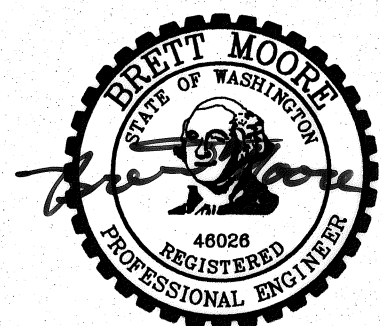
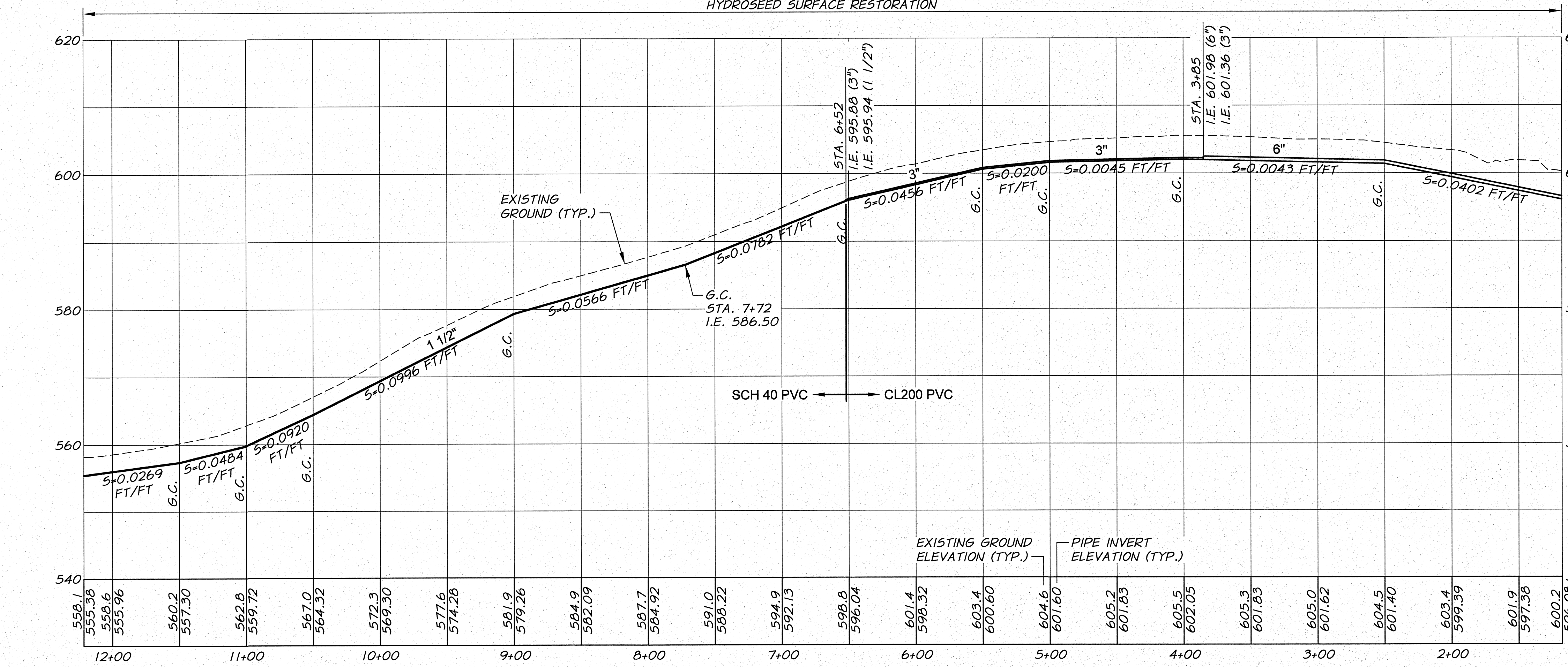
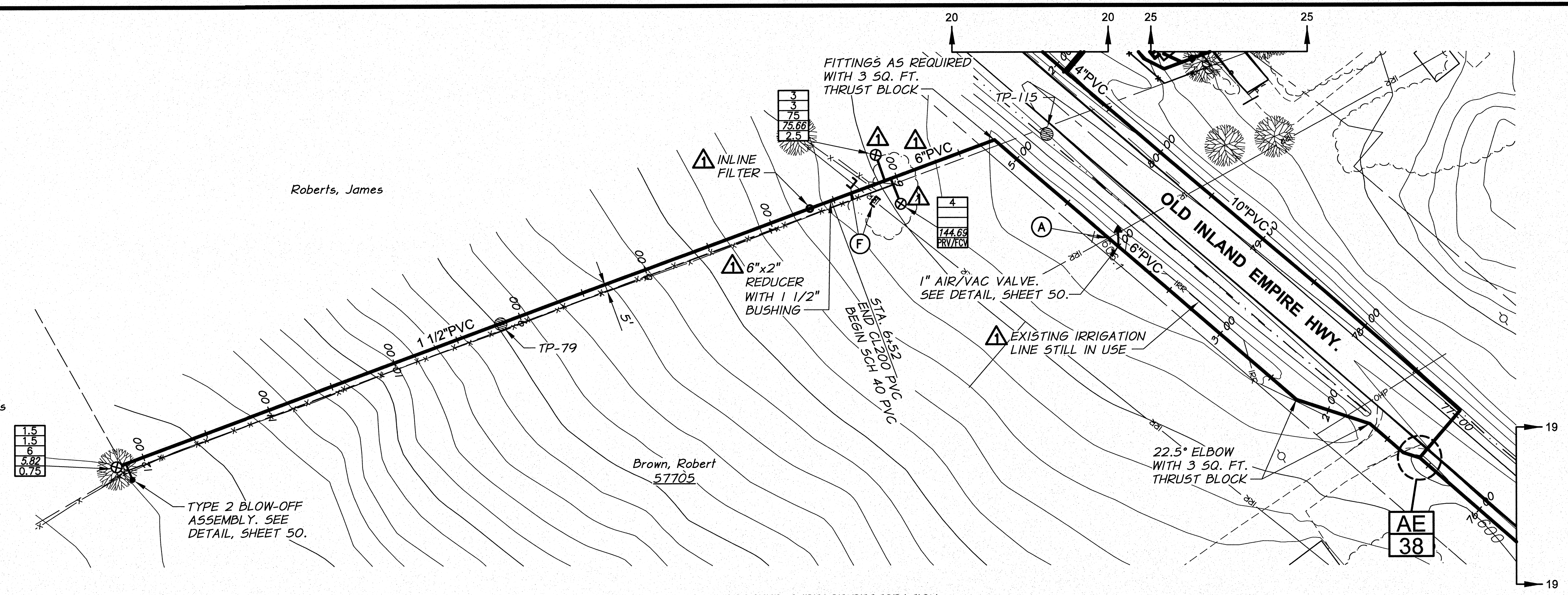


WORK ITEMS

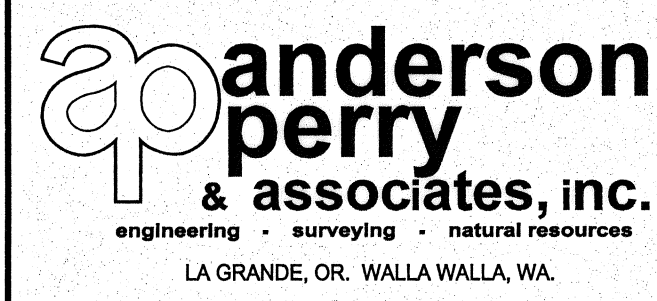
- (A) EXISTING IRRIGATION LINE ALONG OR CROSSING ALIGNMENT. EXACT LOCATION UNKNOWN. REMOVE AND PLUG AS REQUIRED FOR NEW LINE INSTALLATION. INCIDENTAL TO SERVICE WORK. USE FITTINGS AS REQUIRED.
- (F) CUT AND CAP EXISTING IRRIGATION THIS LOCATION ONLY. PROVIDE THRUST BLOCKING FOR CAPS AS REQUIRED BY ENGINEER. (APPROX 2 SQ. FT. EACH)



SIGNED 06-04-12
RECORD DRAWINGS

RECORD DRAWINGS		BY: B.M.	DATE: 5/12
DESIGNED BY: R. HARRIS	XREFS: TB-BID.dwg		
DRAWN BY: E. ARNTZ	JOB NUMBER: 1199-336	DATE: 2011	
REVIEWED BY: B. MOORE	ACAD FILE: West_Main_F.dwg	COPYRIGHT 2011 BY ANDERSON-PERRY & ASSOC., INC.	

RECORD DRAWINGS
These record drawings have been prepared, in part, on the basis of information compiled and furnished by others. They may contain some discrepancies and omissions, and do not necessarily represent "exact" field conditions. The Owner and the Engineer accept no responsibility for their accuracy.



BENTON IRRIGATION DISTRICT
IRRIGATION SYSTEM IMPROVEMENTS
PHASE 2B

BRANCH LINE PIPING
STA. 1+00 TO STA. 8+50