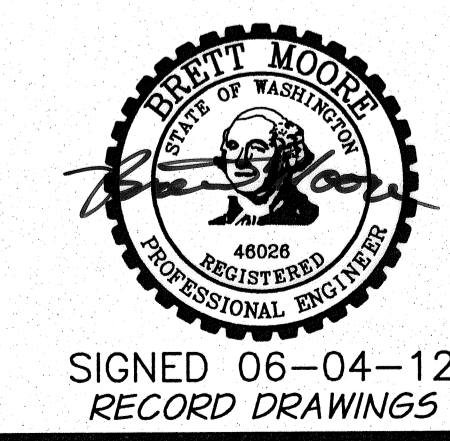
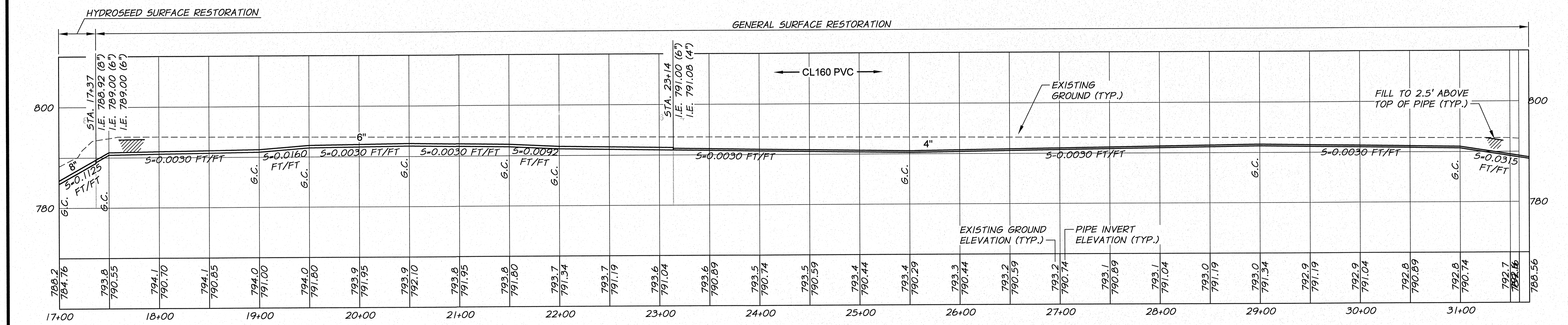
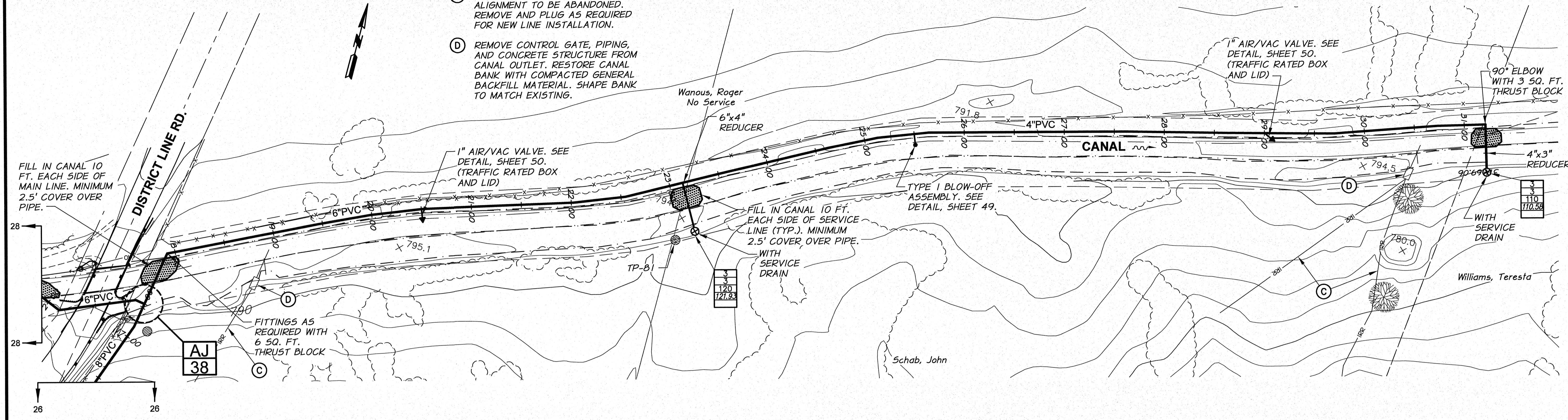


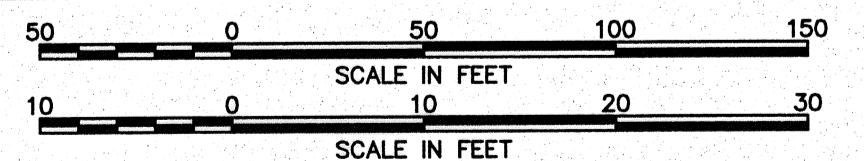
**WORK ITEMS**

- (C) EXISTING IRRIGATION LINE ALONG ALIGNMENT TO BE ABANDONED. REMOVE AND PLUG AS REQUIRED FOR NEW LINE INSTALLATION.
- (D) REMOVE CONTROL GATE, PIPING, AND CONCRETE STRUCTURE FROM CANAL OUTLET. RESTORE CANAL BANK WITH COMPACTED GENERAL BACKFILL MATERIAL. SHAPE BANK TO MATCH EXISTING.

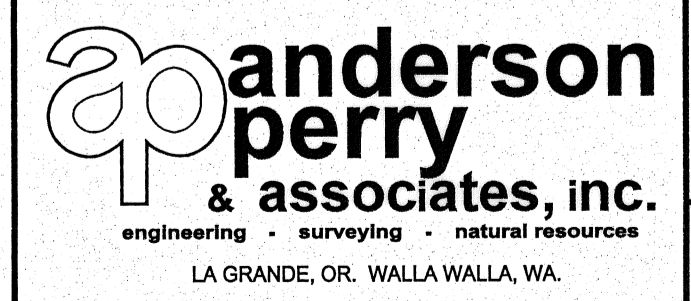


SIGNED 06-04-12  
RECORD DRAWINGS

REVISION	BY	DATE	HORIZ. SCALE 1"=50'	VERT. SCALE 1"=10'
DESIGNED BY R. HARRIS	XREFS: TB-BID.dwg		JOB NUMBER 1199-336	DATE 2011
DRAWN BY E. ARNTZ			ACAD FILE: West_Main_E.dwg	
REVIEWED BY B. MOORE			COPYRIGHT 2011 BY ANDERSON-PERRY & ASSOC., INC.	



**RECORD DRAWINGS**  
These record drawings have been prepared in part, on the basis of information compiled and furnished by others. They may contain some discrepancies and omissions, and do not necessarily represent "exact" field conditions. The Owner and the Engineer accept no responsibility for their accuracy.



**BENTON IRRIGATION DISTRICT**  
IRRIGATION SYSTEM IMPROVEMENTS  
PHASE 2B  
O.I.E. HWY. TO CANAL PIPING  
STA. 17+00 TO STA. 31+69