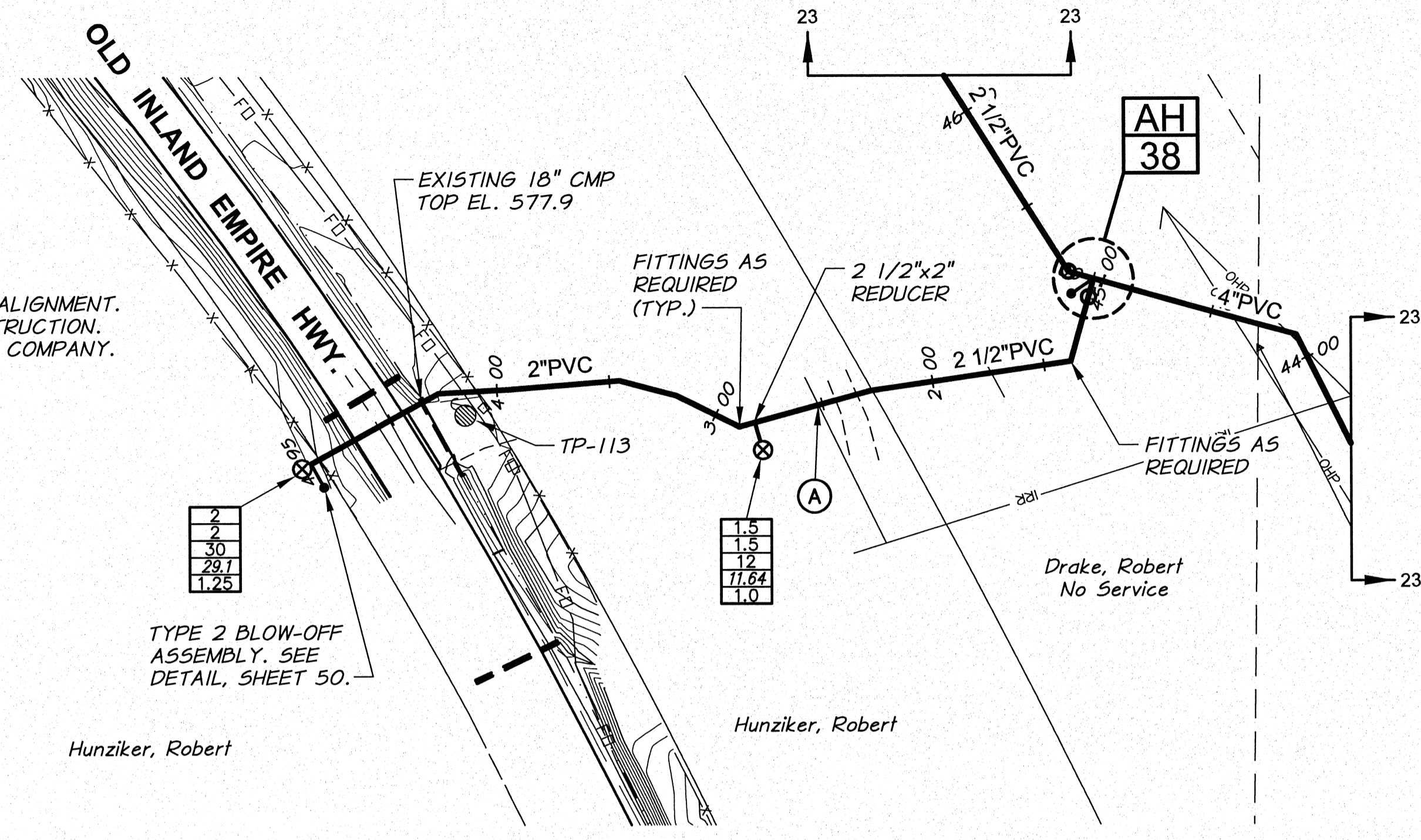


**WORK ITEMS**

- (A) EXISTING IRRIGATION LINE ALONG OR CROSSING ALIGNMENT. EXACT LOCATION UNKNOWN. REMOVE AND PLUG AS REQUIRED FOR NEW LINE INSTALLATION.



**CAUTION!**  
FIBER-OPTIC LINE ALONG ALIGNMENT. POT HOLE PRIOR TO CONSTRUCTION. COORDINATE WITH UTILITY COMPANY.

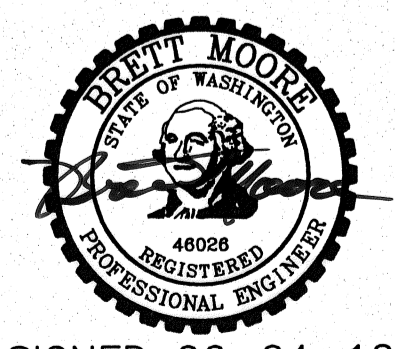
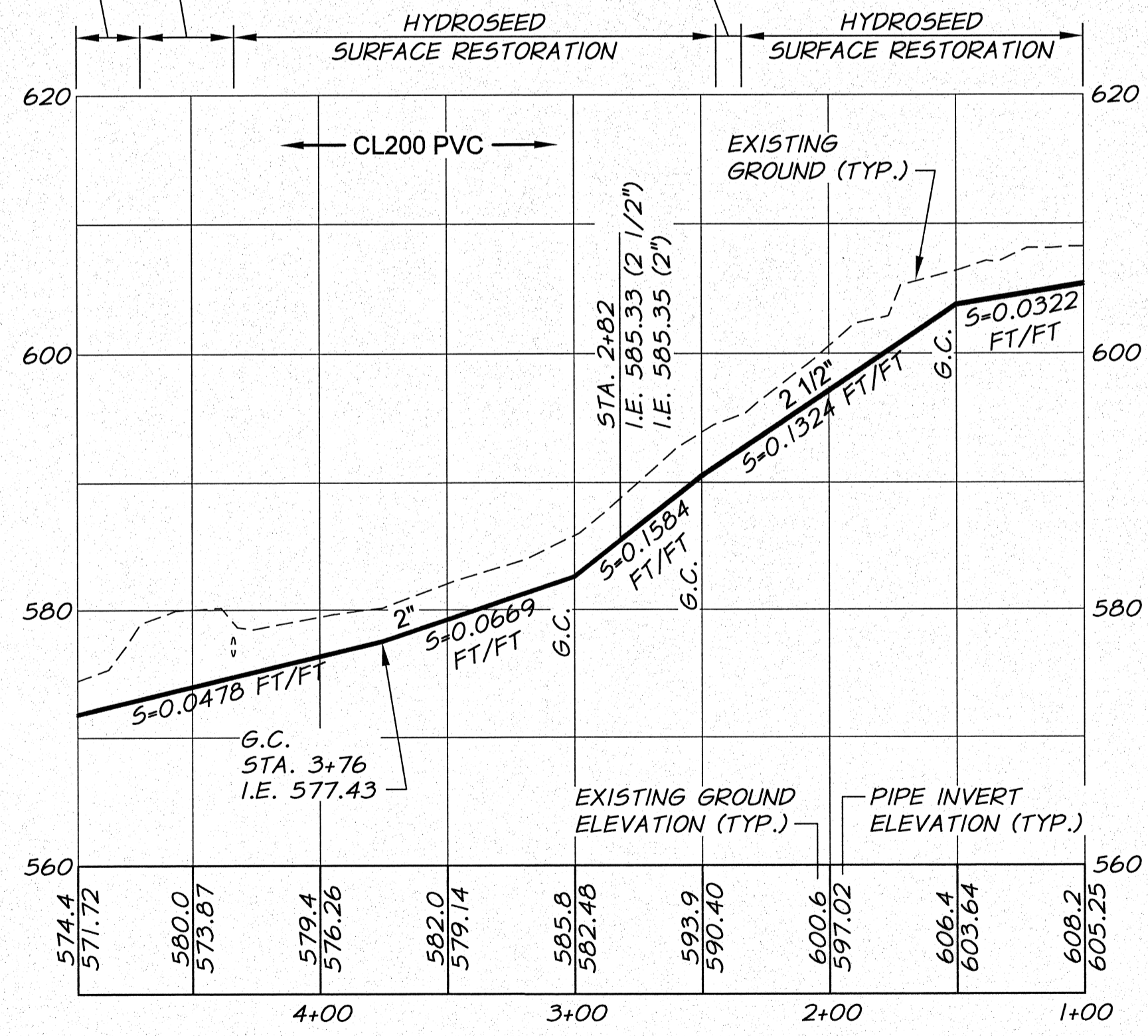


TYPE 2 BLOW-OFF ASSEMBLY. SEE DETAIL, SHEET 50.

**ASPHALT AND GRAVEL SURFACE RESTORATION**

**HYDROSEED SURFACE RESTORATION**

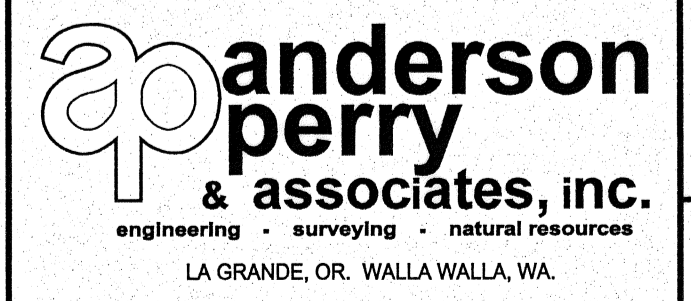
**GRAVEL SURFACE RESTORATION**



SIGNED 06-04-12  
RECORD DRAWINGS

REVISION	BY	DATE	HORIZ. SCALE 1"=50'	VERT. SCALE 1"=10'
DESIGNED BY R. HARRIS			JOB NUMBER 1199-336	DATE 2011
DRAWN BY E. ARNTZ			ACAD FILE West_Main_E.dwg	
REVIEWED BY B. MOORE			COPYRIGHT 2011 BY ANDERSON-PERRY & ASSOC., INC.	

**RECORD DRAWINGS**  
These record drawings have been prepared, in part, on the basis of information compiled and furnished by others. They may contain some discrepancies and omissions, and do not necessarily represent "exact" field conditions. The Owner and the Engineer accept no responsibility for their accuracy.



**BENTON IRRIGATION DISTRICT**  
IRRIGATION SYSTEM IMPROVEMENTS  
PHASE 2B  
  
O.I.E. HWY. PIPING  
STA. 1+00 TO STA. 4+95

SHEET  
**24**