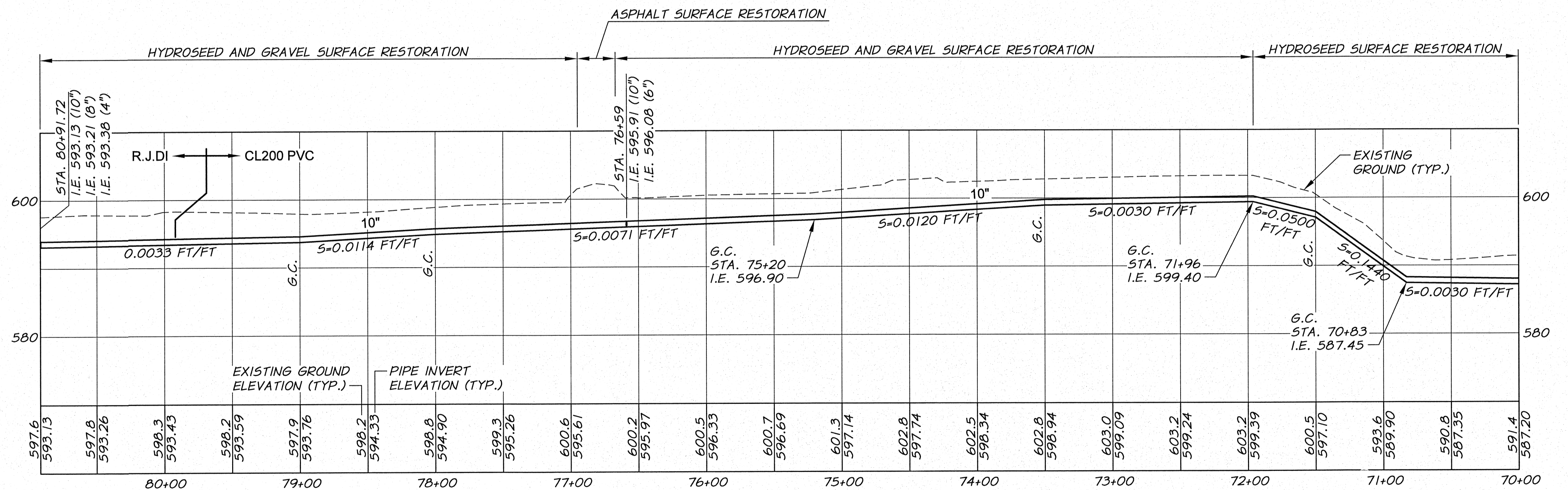
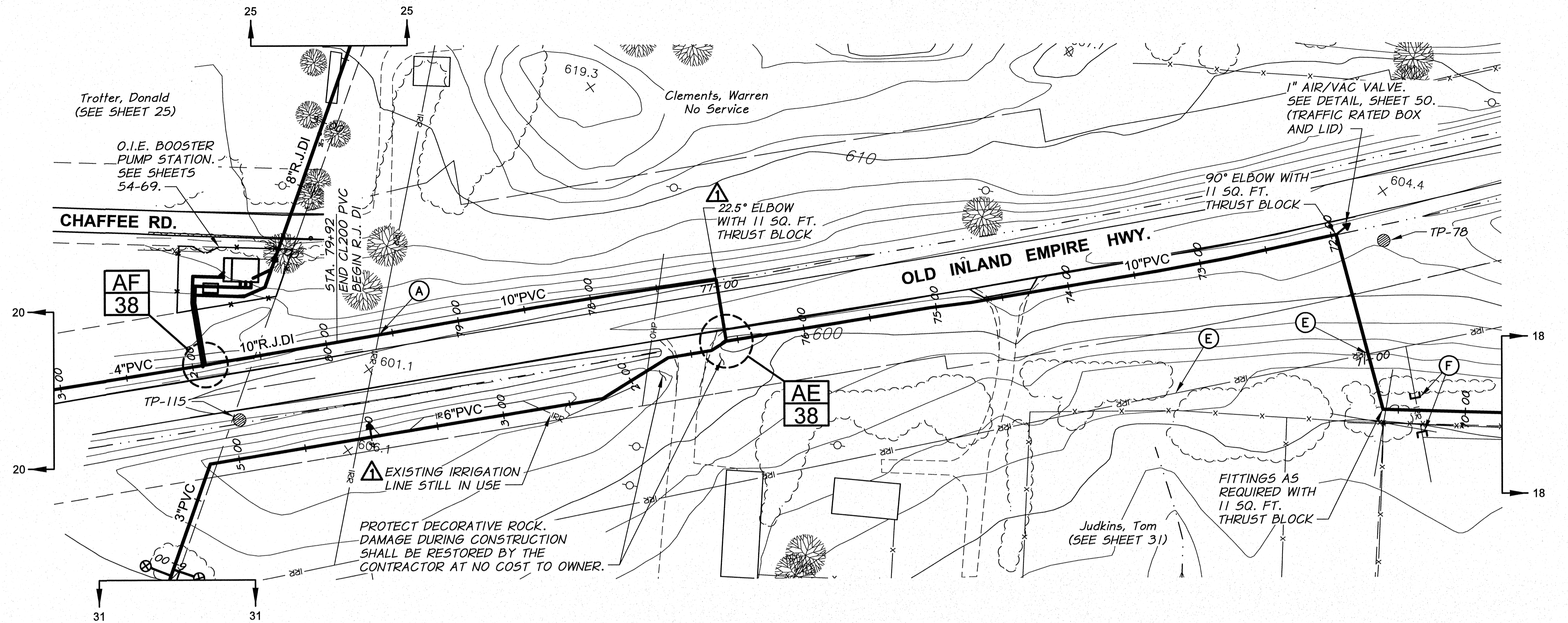


WORK ITEMS

- (A) EXISTING IRRIGATION LINE ALONG OR CROSSING ALIGNMENT. EXACT LOCATION UNKNOWN. REMOVE AND PLUG AS REQUIRED FOR NEW LINE INSTALLATION.
- (E) EXISTING IRRIGATION LINE ALONG OR CROSSING ALIGNMENT TO REMAIN. EXACT LOCATION UNKNOWN. POT HOLE PRIOR TO CONSTRUCTION. FOR MAIN LINE CROSSING CONFLICT, LOWER EXISTING LINE UNDER NEW LINE AS REQUIRED. SEE DETAIL, SHEET 51. FOR MAIN LINE PARALLEL LINE CONFLICT, ADJUST LOCATION OF NEW MAIN LINE AS REQUESTED BY THE ENGINEER TO PROVIDE CLEARANCE BETWEEN LINES. FOR NEW SERVICE LINE CROSSING EXISTING LINE, CONSTRUCT NEW SERVICE LINE UNDER THE EXISTING LINE, UNLESS OTHERWISE APPROVED BY THE ENGINEER. WORK TO BE INCIDENTAL TO SERVICE WORK. USE FITTINGS AS REQUIRED.
- (F) CUT AND CAP EXISTING IRRIGATION THIS LOCATION ONLY. PROVIDE THRUST BLOCKING FOR CAPS AS REQUIRED BY ENGINEER (APPROX 2 SQ. FT. EACH).

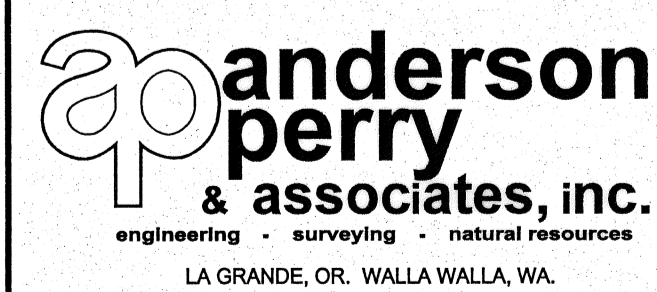


SIGNED 06-04-12
RECORD DRAWINGS

RECORD DRAWINGS		BY	B.M.	DATE	5/12	
DESIGNED BY	R. HARRIS	XREFS:	TB-BID.dwg			
DRAWN BY	E. ARNTZ	JOB NUMBER	1199-336			
REVIEWED BY	B. MOORE	ACAD FILE	West_Main_C.dwg			
		HORIZ. SCALE		1"=50'		
		VERT. SCALE		1"=10'		
		DATE				2011
COPYRIGHT 2011 BY ANDERSON-PERRY & ASSOC., INC.						

RECORD DRAWINGS

These record drawings have been prepared, in part, on the basis of information compiled and furnished by others. They may contain some discrepancies and omissions, and do not necessarily represent "exact" field conditions. The Owner and the Engineer accept no responsibility for their accuracy.



BENTON IRRIGATION DISTRICT
IRRIGATION SYSTEM IMPROVEMENTS
PHASE 2B

POWER PLANT TO O.I.E. HWY. PIPING
STA. 70+00 TO STA. 80+91.72

SHEET

19