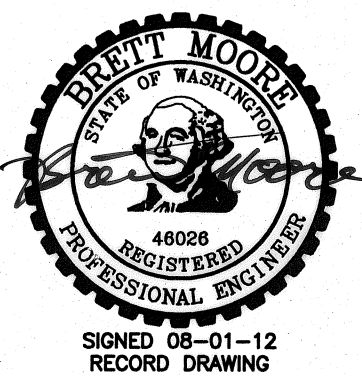
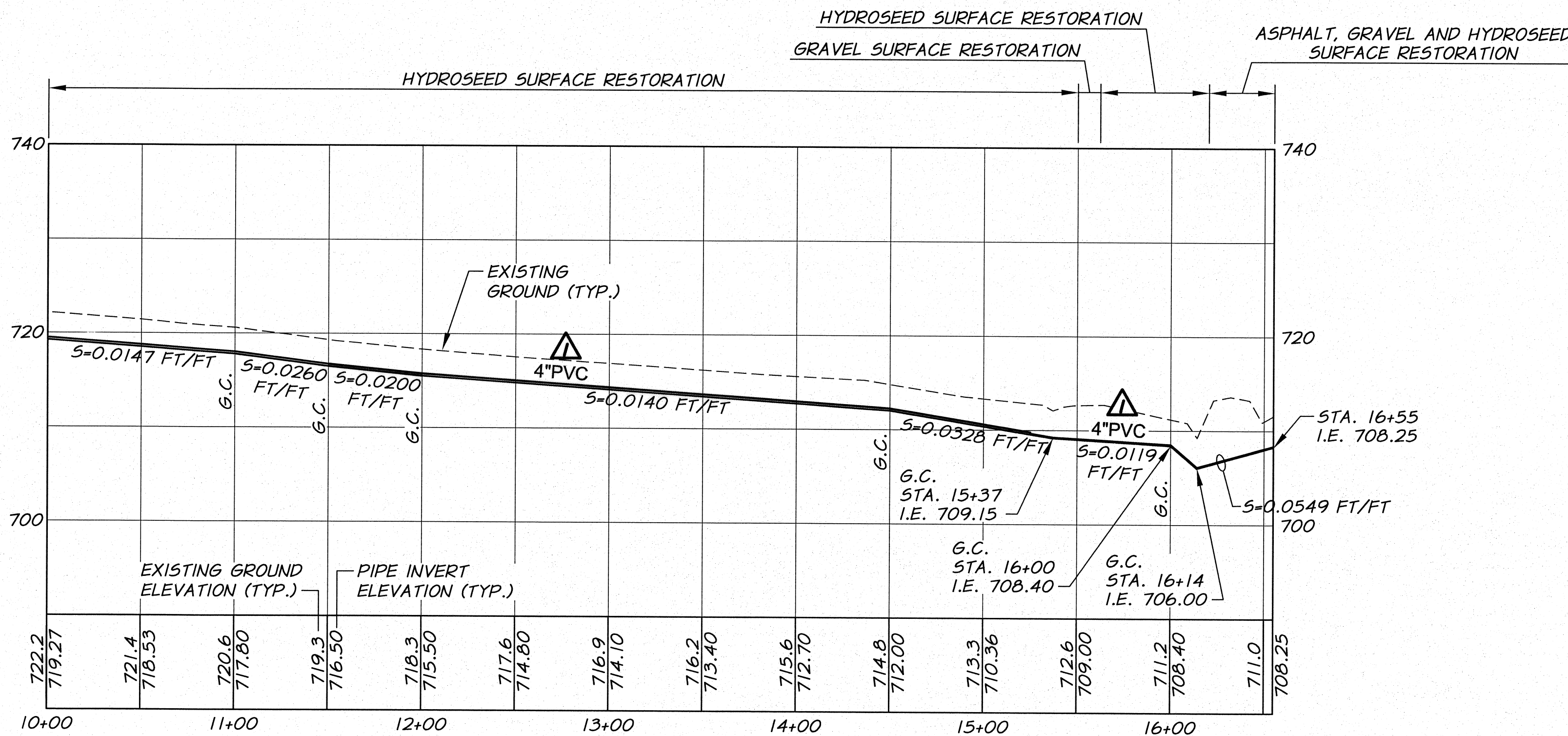
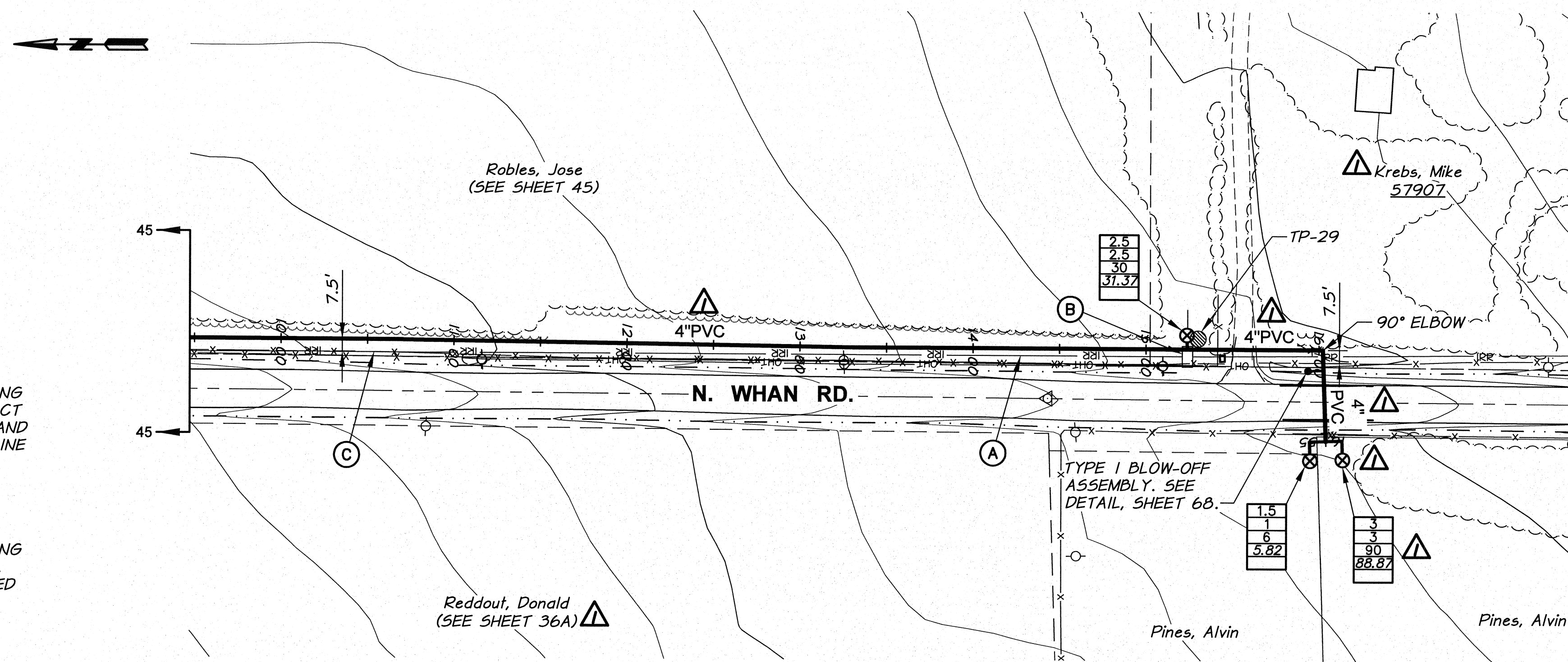


WORK ITEMS

- (A) EXISTING IRRIGATION LINE ALONG OR CROSSING ALIGNMENT. EXACT LOCATION UNKNOWN. REMOVE AND PLUG AS REQUIRED FOR NEW LINE INSTALLATION.
- (B) EXISTING IRRIGATION CONTROL STRUCTURE TO BE REMOVED.
- (C) EXISTING IRRIGATION LINE ALONG ALIGNMENT TO BE ABANDONED. REMOVE AND PLUG AS REQUIRED FOR NEW LINE INSTALLATION.

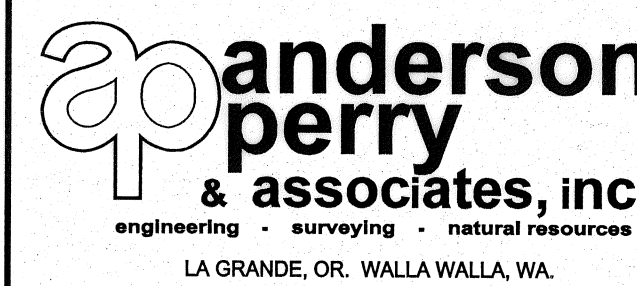


REVISION		BY	DATE
RECORD DRAWING		E.H.	4/12
DESIGNED BY	XREFS: TB-BID.dwg		
DRAWN BY	E. ARNTZ		
REVIEWED BY	J. HOLLOPETER		

50 0 50 100 150 SCALE IN FEET	
10 0 20 30 SCALE IN FEET	
HORIZ. SCALE 1"=50'	VERT. SCALE 1"=10'
JOB NUMBER 1199-336	DATE 2010
ACAD FILE: North_C.dwg	
COPYRIGHT 2010 BY ANDERSON-PERRY & ASSOC., INC.	

RECORD DRAWINGS

These record drawings have been prepared, in part, on the basis of information compiled and furnished by others. They may contain some discrepancies and omissions, and do not necessarily represent "exact" field conditions. The Owner and the Engineer accept no responsibility for their accuracy.



**BENTON IRRIGATION DISTRICT
IRRIGATION SYSTEM IMPROVEMENTS
PHASE 2A**

**NORTH - N. WHAN ROAD PIPING
STA. 10+00 TO STA. 16+55**

SHEET

46

ARCHIVED