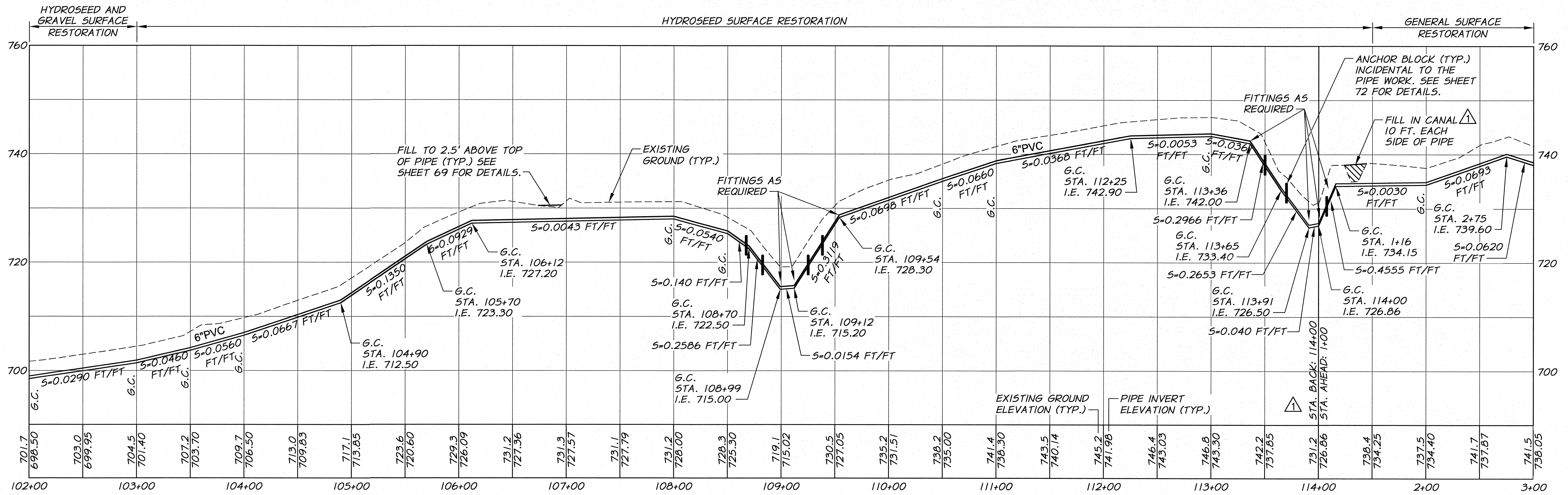


WORK ITEMS

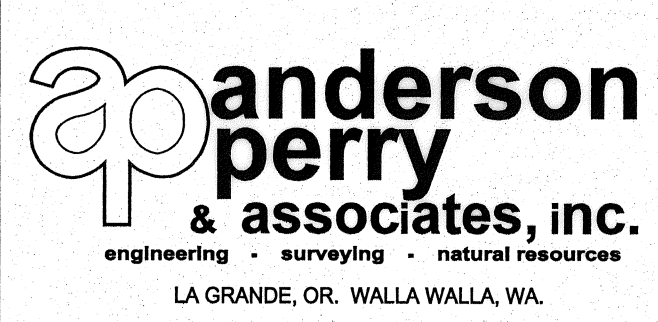
- (A) EXISTING IRRIGATION LINE ALONG OR CROSSING ALIGNMENT. EXACT LOCATION UNKNOWN. REMOVE AND PLUG AS REQUIRED FOR NEW LINE INSTALLATION.
- (D) REMOVE CONTROL GATE, PIPING, AND CONCRETE STRUCTURE FROM CANAL OUTLET. RESTORE CANAL BANK WITH COMPACTED GENERAL BACKFILL MATERIAL. SHAPE BANK TO MATCH EXISTING. PAID UNDER "IRRIGATION CONTROL STRUCTURE REMOVAL" BID ITEM.



RECORD DRAWING		E.H.	4/12
ADDENDUM NO. 1		R.H.	9/10
DESIGNED BY	R. HARRIS	DATE	4/12
DRAWN BY	E. ARNTZ	DATE	9/10
REVIEWED BY	J. HOLLOPETER		

HORIZ. SCALE	1" = 50'
VERT. SCALE	1" = 10'
DESIGNED BY	R. HARRIS
DRAWN BY	E. ARNTZ
REVIEWED BY	J. HOLLOPETER
JOB NUMBER	1199-336
DATE	2010
ACAD FILE	North_B.dwg
COPYRIGHT 2010 BY ANDERSON-PERRY & ASSOC., INC.	

RECORD DRAWINGS
 These record drawings have been prepared, in part, on the basis of information compiled and furnished by others. They may contain some discrepancies and omissions, and do not necessarily represent "exact" field conditions. The Owner and the Engineer accept no responsibility for their accuracy.



BENTON IRRIGATION DISTRICT
 IRRIGATION SYSTEM IMPROVEMENTS
 PHASE 2A
 NORTH - MORGAN TO SUNRISE PIPING
 STA. 102+00 TO STA. 3+00