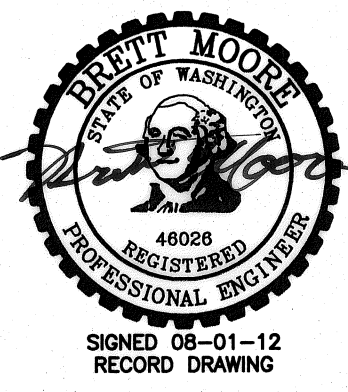
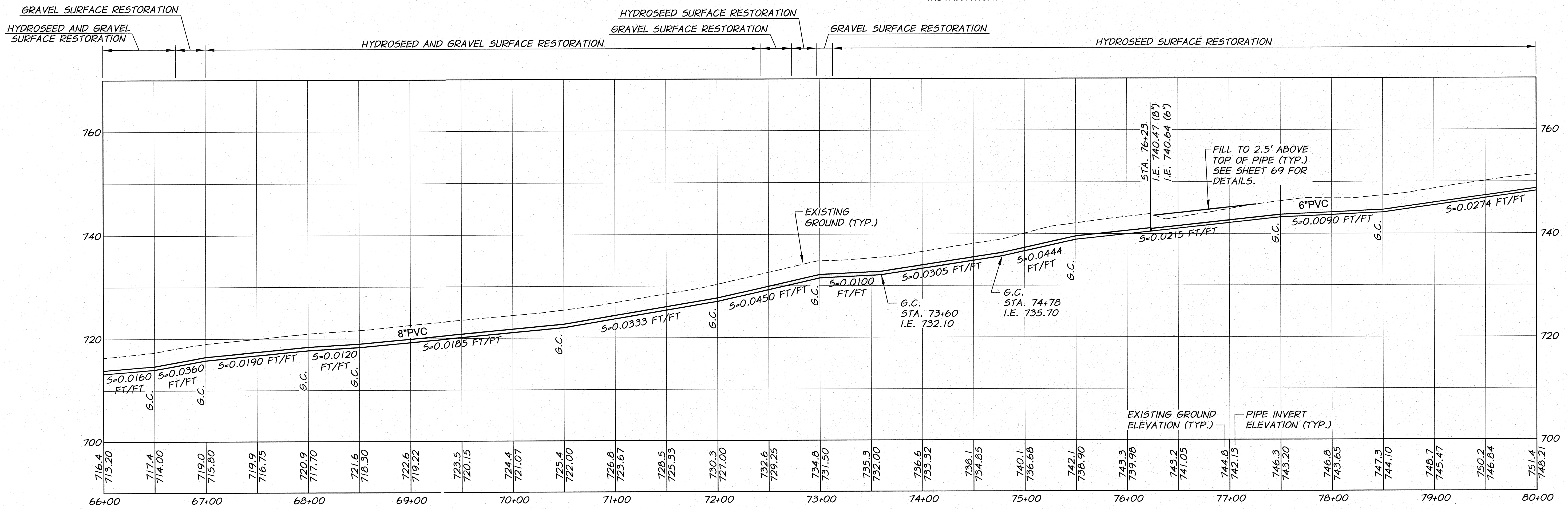
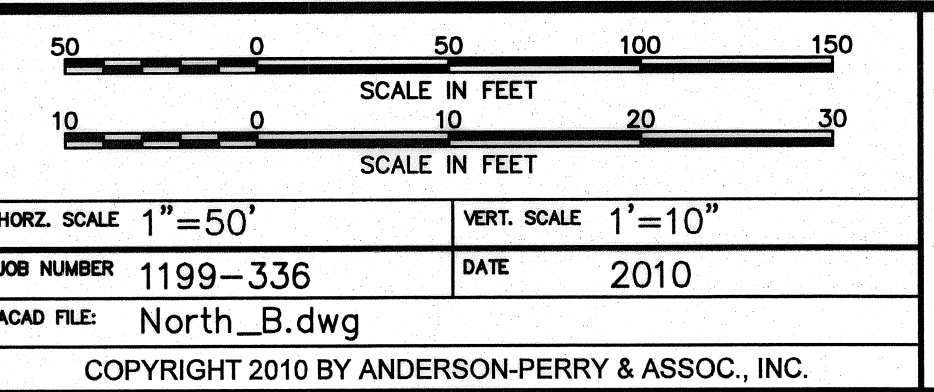


**WORK ITEMS**

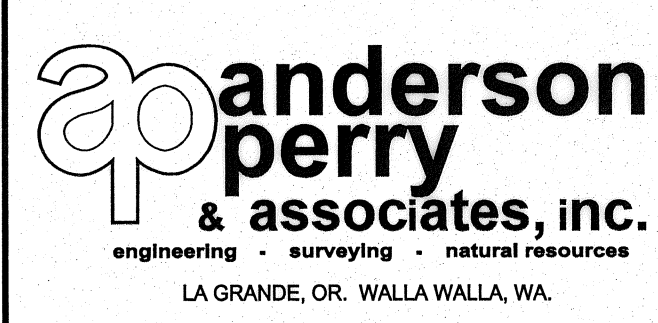
- (A) EXISTING IRRIGATION LINE ALONG OR CROSSING ALIGNMENT. EXACT LOCATION UNKNOWN. REMOVE AND PLUG AS REQUIRED FOR NEW LINE INSTALLATION.
- (B) EXISTING IRRIGATION CONTROL STRUCTURE TO BE REMOVED.
- (C) EXISTING IRRIGATION LINE ALONG ALIGNMENT TO BE ABANDONED. REMOVE AND PLUG AS REQUIRED FOR NEW LINE INSTALLATION.



<b>RECORD DRAWING</b>		BY: E.H.	DATE: 4/12
DESIGNED BY: R. HARRIS	XREFS: TB-BID.dwg		
DRAWN BY: E. ARNTZ	JOB NUMBER: 1199-336		
REVIEWED BY: J. HOLLOPETER	DATE: 2010		
	ACAD FILE: North_B.dwg		
	COPYRIGHT 2010 BY ANDERSON-PERRY & ASSOC., INC.		



**RECORD DRAWINGS**  
 These record drawings have been prepared, in part, on the basis of information compiled and furnished by others. They may contain some discrepancies and omissions, and do not necessarily represent "exact" field conditions. The Owner and the Engineer accept no responsibility for their accuracy.



**BENTON IRRIGATION DISTRICT**  
 IRRIGATION SYSTEM IMPROVEMENTS  
 PHASE 2A  
 NORTH - MORGAN TO SUNRISE PIPING  
 STA. 66+00 TO STA. 80+00