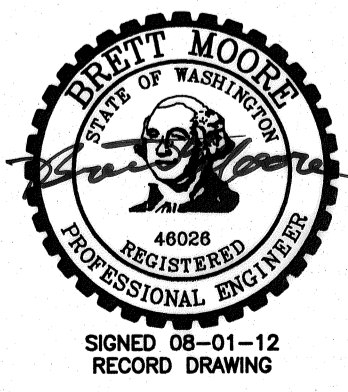
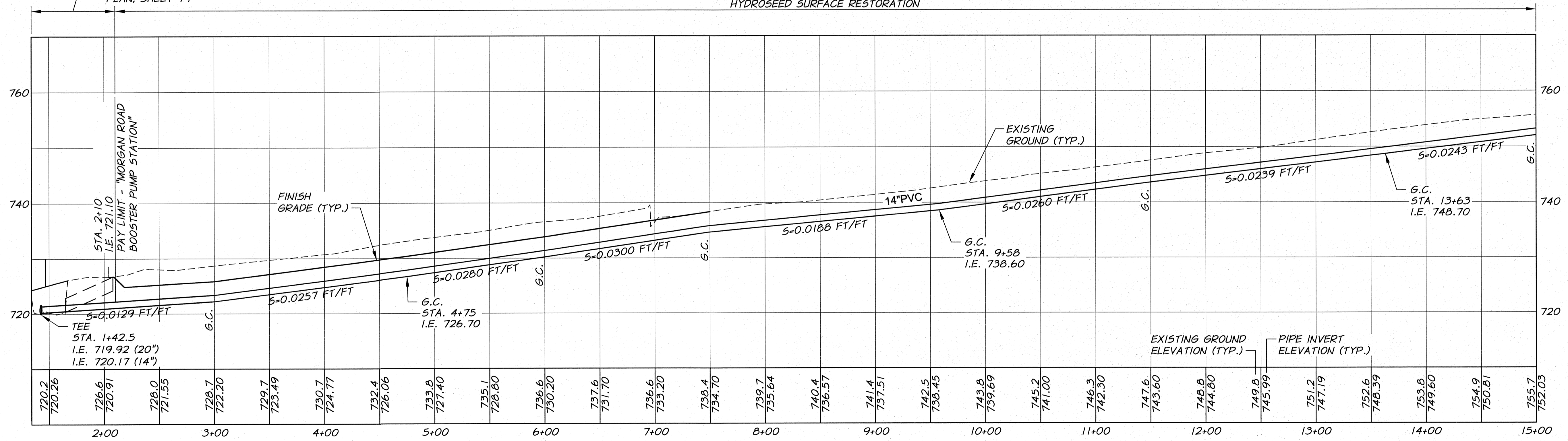


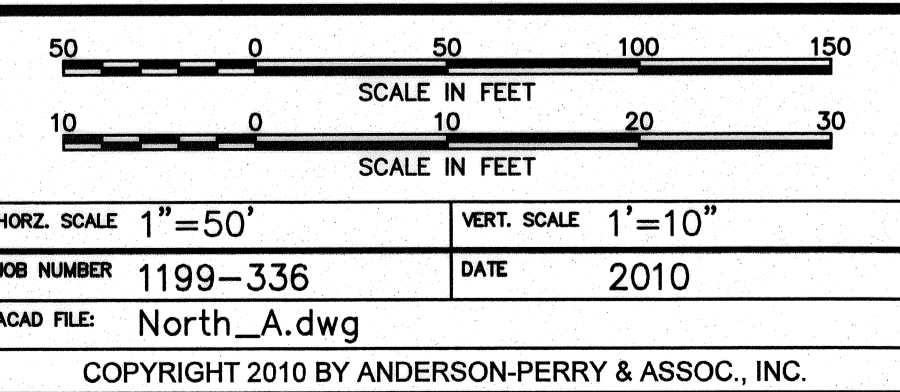
- WORK ITEMS**
- (A) EXISTING IRRIGATION LINE ALONG OR CROSSING ALIGNMENT. EXACT LOCATION UNKNOWN. REMOVE AND PLUG AS REQUIRED FOR NEW LINE INSTALLATION.
 - (B) EXISTING IRRIGATION CONTROL STRUCTURE TO BE REMOVED.

ASPHALT AND GRAVEL SURFACE RESTORATION SEE PUMP STATION SITE PLAN, SHEET 74

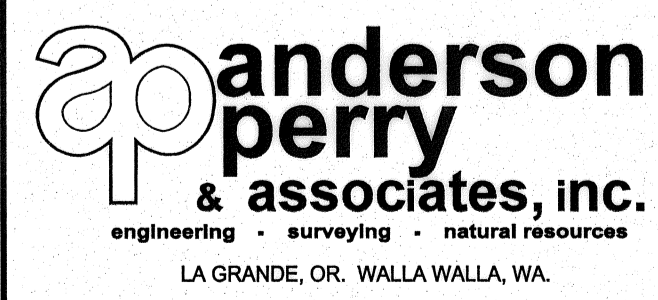
SECTION
N.T.S.



RECORD DRAWING		BY	E.H.	DATE	4/12
DESIGNED BY	R. HARRIS	XREFS:	TB-BID.dwg		
DRAWN BY	E. ARNTZ	JOB NUMBER	1199-336		
REVIEWED BY	J. HOLLOPETER	DATE	2010		
		ACAD FILE:	North_A.dwg		
		COPYRIGHT 2010 BY ANDERSON-PERRY & ASSOC., INC.			



RECORD DRAWINGS
These record drawings have been prepared, in part, on the basis of information compiled and furnished by others. They may contain some discrepancies and omissions, and do not necessarily represent "exact" field conditions. The Owner and the Engineer accept no responsibility for their accuracy.



BENTON IRRIGATION DISTRICT
IRRIGATION SYSTEM IMPROVEMENTS
PHASE 2A
NORTH - MORGAN TO SUNRISE PIPING
PUMPSTATION TO STA. 15+00

SHEET
34

ARCHIVED