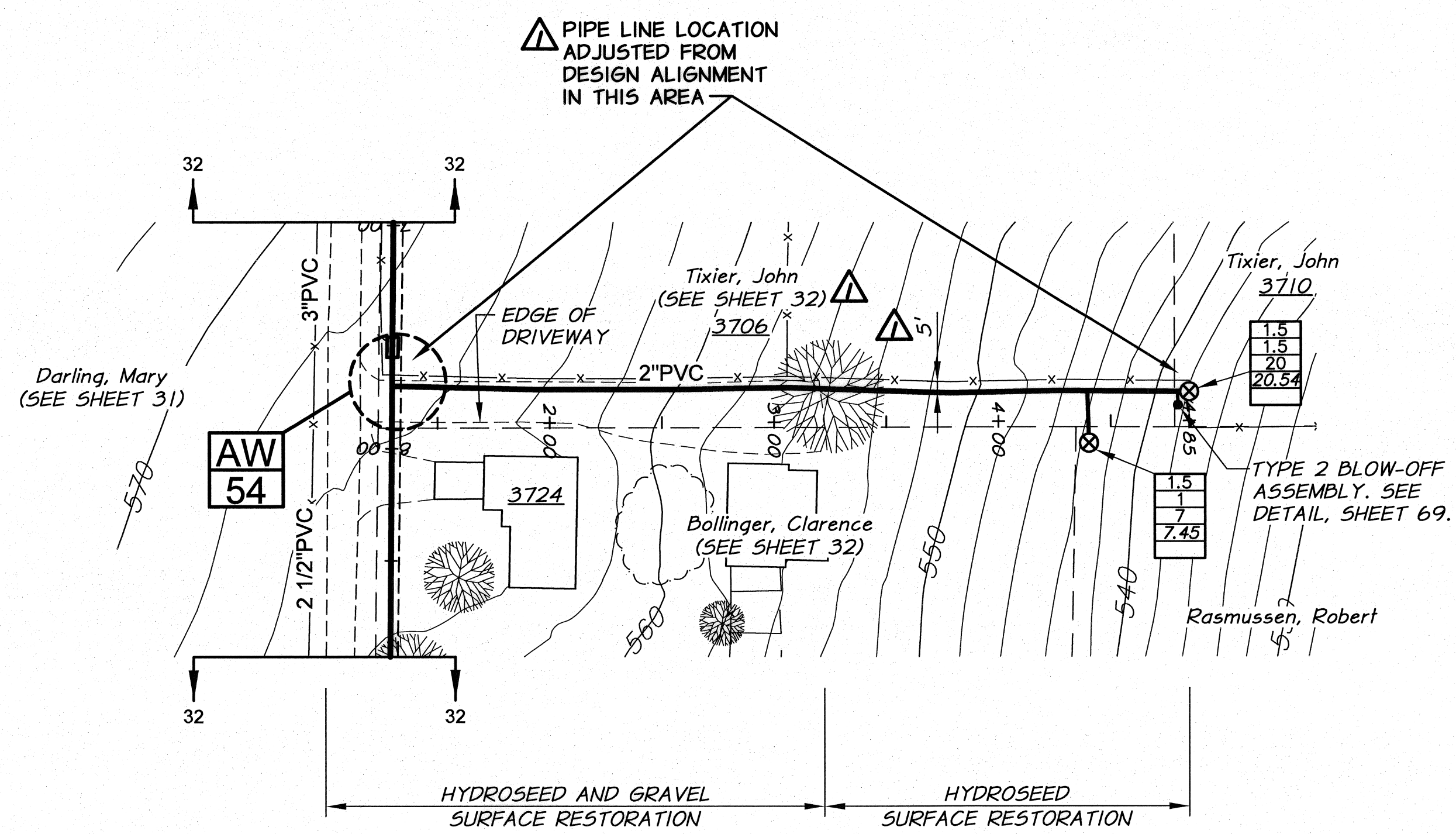
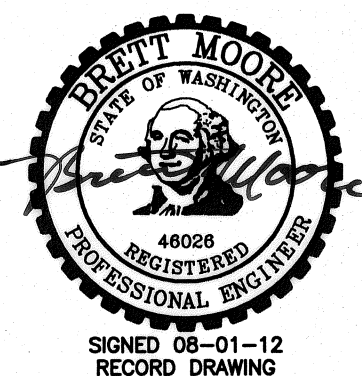


NOTE:
 MAINTAIN 2.5' MIN. COVER AND
 CONTINUOUS DOWNWARD SLOPE
 BEGINNING STA. 11+65 TO END

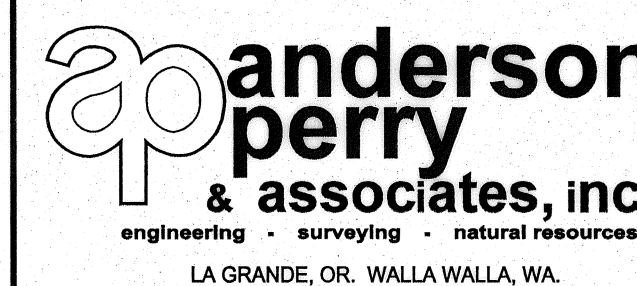


NOTE:
 MAINTAIN 2.5' MIN.
 COVER AND GRADE
 TO DRAIN AWAY
 FROM MAIN LINE.



REVISION		BY	DATE	HORIZ. SCALE 1"=50'	VERT. SCALE 1"=10'
RECORD DRAWING		E.H.	4/12	50 0 50 100 150	SCALE IN FEET
DESIGNED BY R. HARRIS		XREFS: TB-BID.dwg		10 0 10 20 30	SCALE IN FEET
DRAWN BY E. ARNTZ		JOB NUMBER 1199-336		DATE 2010	
REVIEWED BY J. HOLLOPETER		ACAD FILE: East_B.dwg		COPYRIGHT 2010 BY ANDERSON-PERRY & ASSOC., INC.	

RECORD DRAWINGS
 These record drawings have been prepared, in part, on the basis of information compiled and furnished by others. They may contain some discrepancies and omissions, and do not necessarily represent "exact" field conditions. The Owner and the Engineer accept no responsibility for their accuracy.



BENTON IRRIGATION DISTRICT
 IRRIGATION SYSTEM IMPROVEMENTS
 PHASE 2A
 EAST - W. CORRAL CREEK RD. PIPING
 STA. 12+00 TO 16+30 AND STA. 1+00 TO 4+85

SHEET
33