

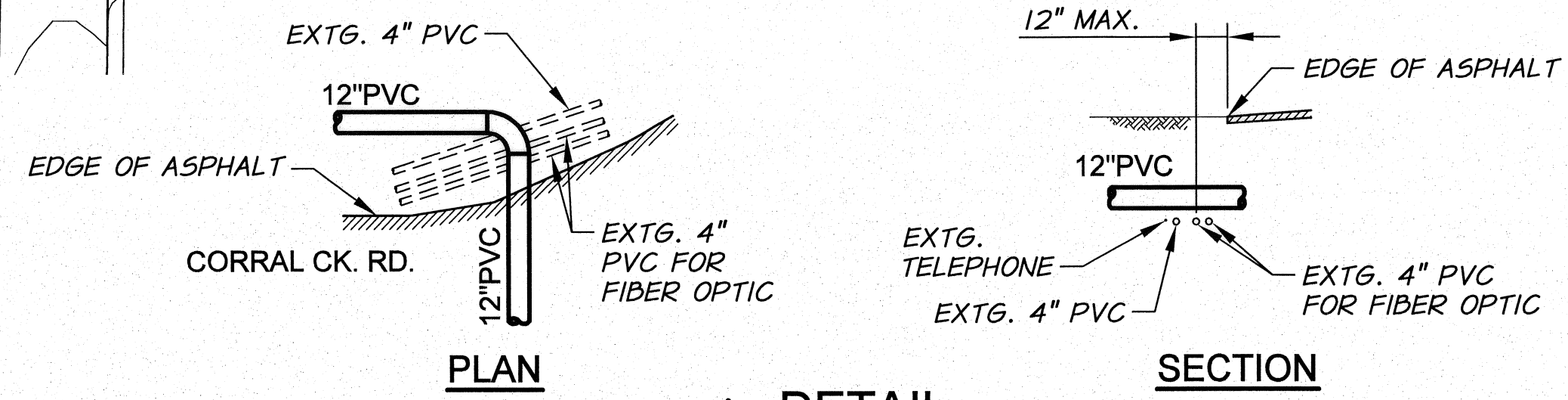
NOTE: PROTECT ORCHARD LIMBS AS REQUIRED DURING CONSTRUCTION. EXPENSE FOR DAMAGE TO TREES WILL BE AT CONTRACTOR'S COST, AND NO COST TO THE OWNER.

EXISTING 12\"/>

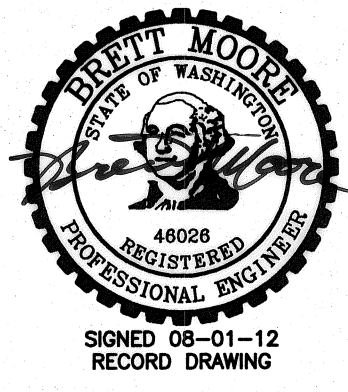
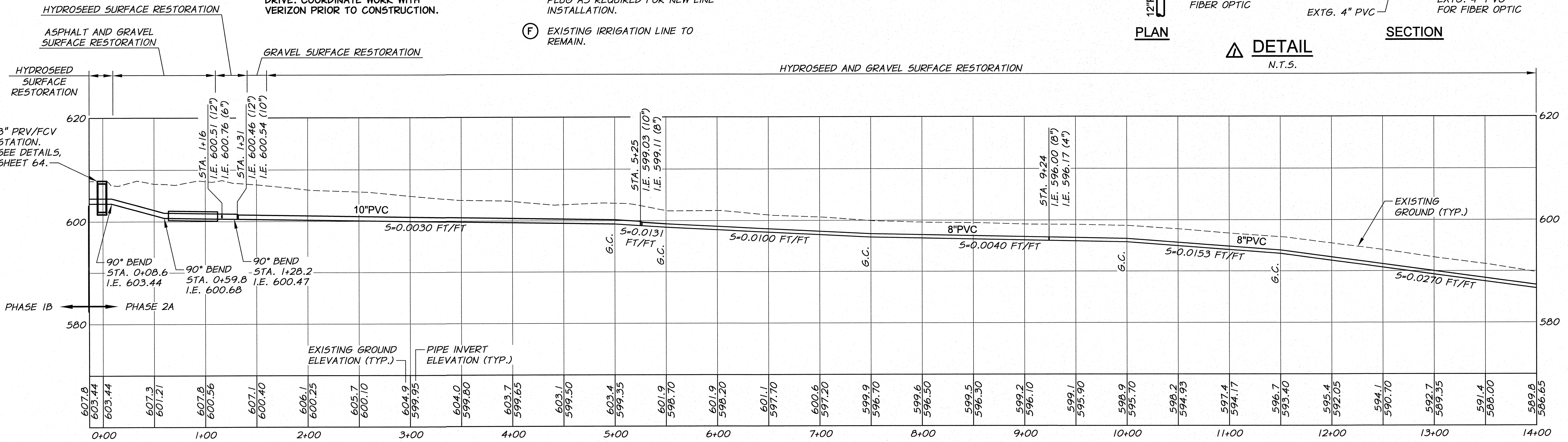
NOTE: CAUTION! FIBER OPTIC LINE OCCURS AT THE INTERSECTION OF HORNE DRIVE AND W. CORRAL CREEK DRIVE AND ON THE EAST RIGHT-OF-WAY OF HORNE DRIVE. COORDINATE WORK WITH VERIZON PRIOR TO CONSTRUCTION.

WORK ITEMS

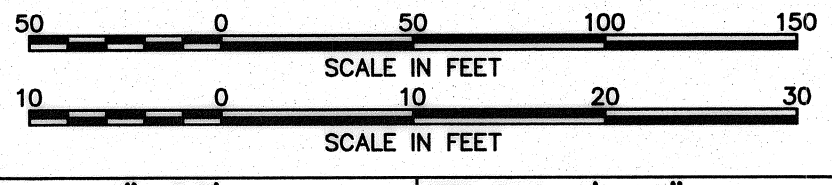
- (A) EXISTING IRRIGATION LINE ALONG OR CROSSING ALIGNMENT. EXACT LOCATION UNKNOWN. REMOVE AND PLUG AS REQUIRED FOR NEW LINE INSTALLATION.
- (F) EXISTING IRRIGATION LINE TO REMAIN.



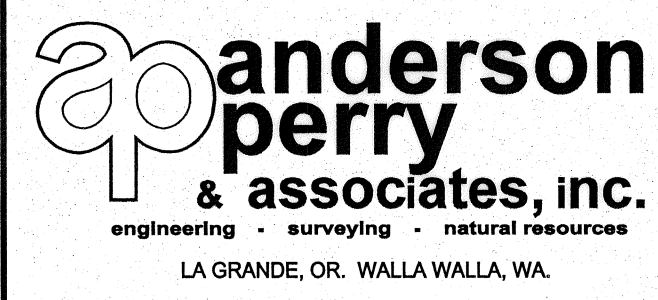
DETAIL
N.T.S.



RECORD DRAWING		E.H. 4/12	
DESIGNED BY	R. HARRIS	DATE	4/12
DRAWN BY	E. ARITZ	JOB NUMBER	1199-336
REVIEWED BY	J. HOLLOPETER	DATE	2010
XREFS: TB-BID.dwg		ACAD FILE:	East_B.dwg
COPYRIGHT 2010 BY ANDERSON-PERRY & ASSOC., INC.			



RECORD DRAWINGS
These record drawings have been prepared, in part, on the basis of information compiled and furnished by others. They may contain some discrepancies and omissions, and do not necessarily represent "exact" field conditions. The Owner and the Engineer accept no responsibility for their accuracy.



BENTON IRRIGATION DISTRICT
IRRIGATION SYSTEM IMPROVEMENTS
PHASE 2A
EAST - W. CORRAL CREEK RD. PIPING
STA. 0+60 TO STA. 14+00

SHEET
30