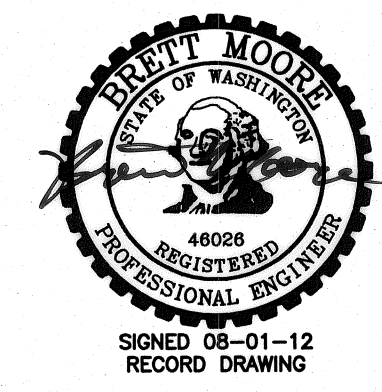
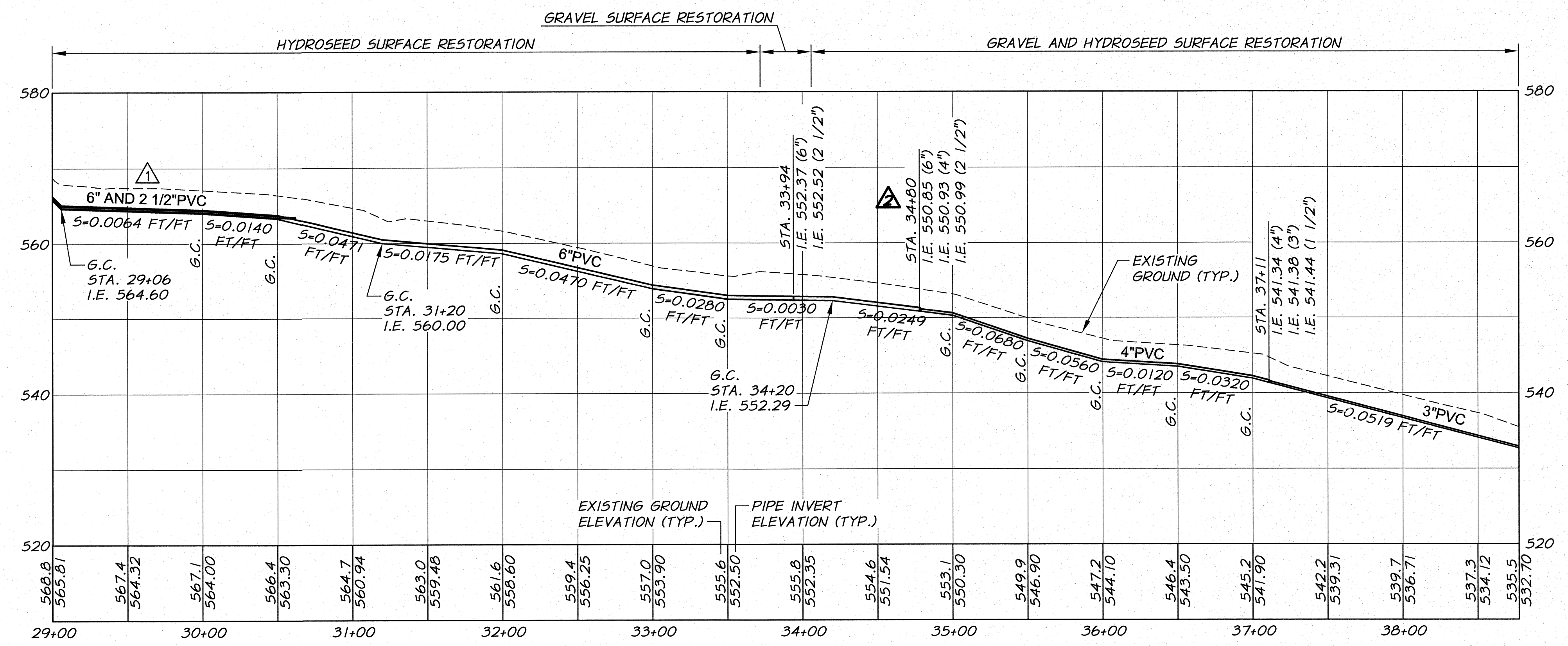
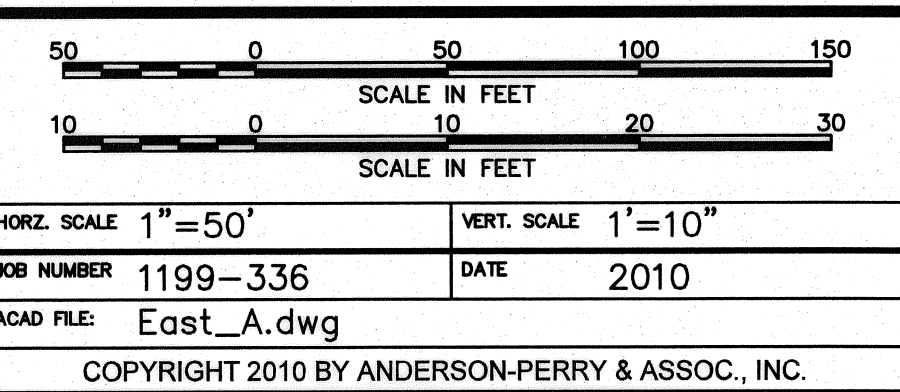


WORK ITEMS

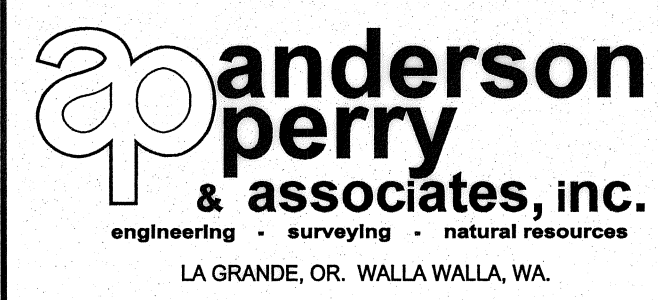
- (A) EXISTING IRRIGATION LINE ALONG OR CROSSING ALIGNMENT. EXACT LOCATION UNKNOWN. REMOVE AND PLUG AS REQUIRED FOR NEW LINE INSTALLATION.



RECORD DRAWING		E.H.	4/12
ADDENDUM NO. 2		R.H.	9/10
DESIGNED BY	R. HARRIS	DATE	
DRAWN BY	E. ARNTZ	JOB NUMBER	1199-336
REVIEWED BY	J. HOLLOPETER	ACAD FILE	East_A.dwg
		DATE	2010



RECORD DRAWINGS
 These record drawings have been prepared, in part, on the basis of information compiled and furnished by others. They may contain some discrepancies and omissions, and do not necessarily represent "exact" field conditions. The Owner and the Engineer accept no responsibility for their accuracy.



BENTON IRRIGATION DISTRICT
 IRRIGATION SYSTEM IMPROVEMENTS
 PHASE 2A
 EAST - HORNE TO MASON PIPING
 STA. 29+00 TO STA. 38+77

SHEET
26