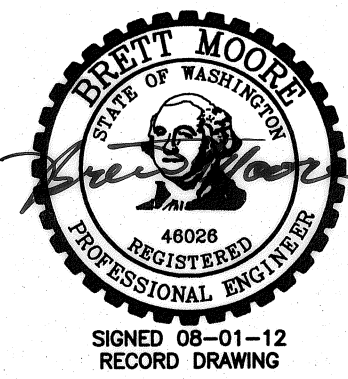
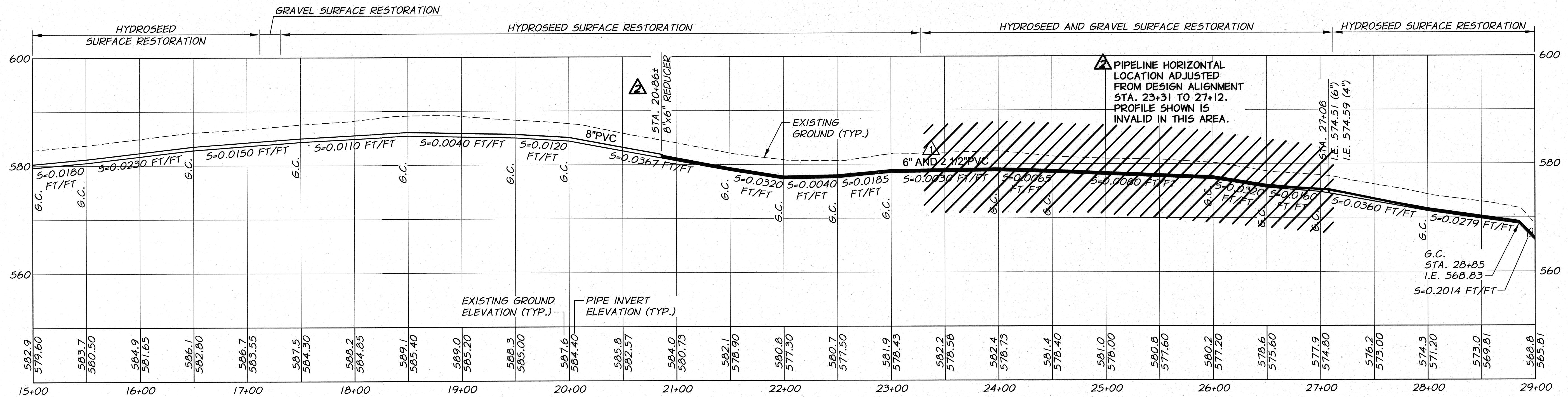
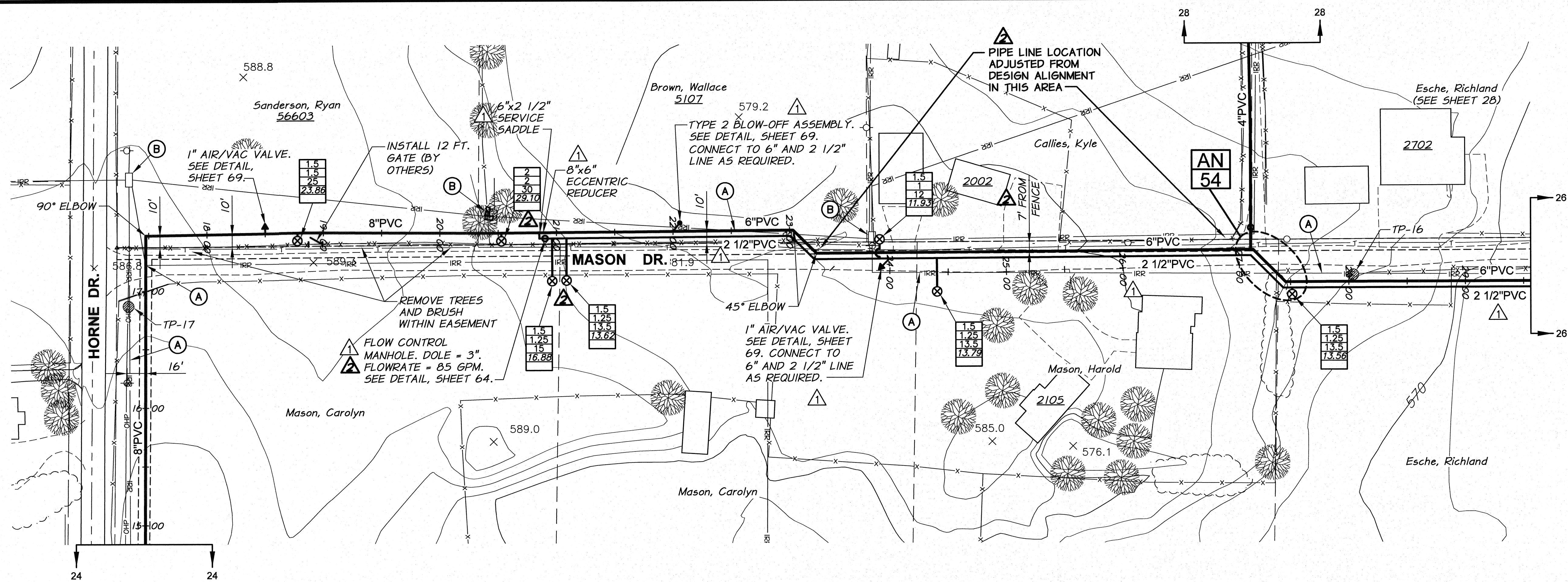


WORK ITEMS

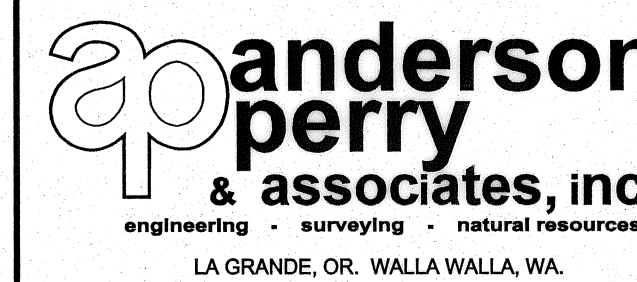
- (A) EXISTING IRRIGATION LINE ALONG OR CROSSING ALIGNMENT. EXACT LOCATION UNKNOWN. REMOVE AND PLUG AS REQUIRED FOR NEW LINE INSTALLATION.
- (B) EXISTING IRRIGATION CONTROL STRUCTURE TO BE REMOVED.



RECORD DRAWING		E.H.	4/12
ADDENDUM NO. 2		R.H.	9/10
DESIGNED BY	R. HARRIS	DATE	
DRAWN BY	E. ARNTZ	DATE	2010
REVIEWED BY	J. HOLLOPETER	DATE	

50 0 50 100 150 SCALE IN FEET	
10 0 10 20 30 SCALE IN FEET	
HORIZ. SCALE	1" = 50'
VERT. SCALE	1" = 10'
DESIGNED BY	R. HARRIS
DRAWN BY	E. ARNTZ
REVIEWED BY	J. HOLLOPETER
JOB NUMBER	1199-336
DATE	2010
ACAD FILE	East_A.dwg
COPYRIGHT 2010 BY ANDERSON-PERRY & ASSOC., INC.	

RECORD DRAWINGS
 These record drawings have been prepared, in part, on the basis of information compiled and furnished by others. They may contain some discrepancies and omissions, and do not necessarily represent "exact" field conditions. The Owner and the Engineer accept no responsibility for their accuracy.



BENTON IRRIGATION DISTRICT
IRRIGATION SYSTEM IMPROVEMENTS
PHASE 2A
EAST - HORNE TO MASON PIPING
STA. 15+00 TO STA. 29+00

SHEET

25

ARCHIVED