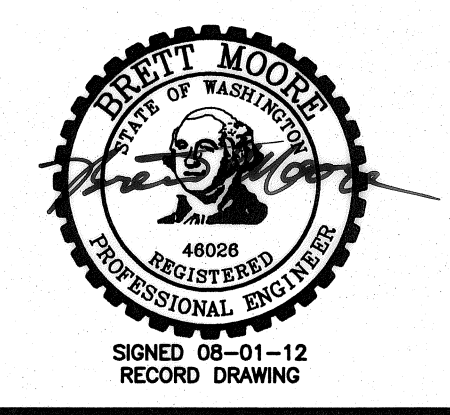
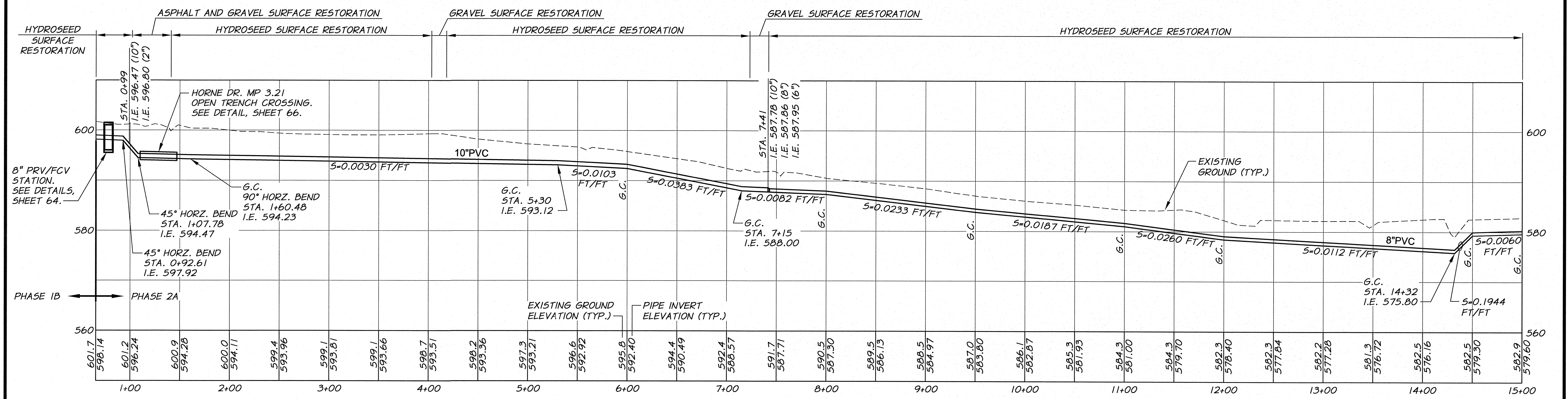
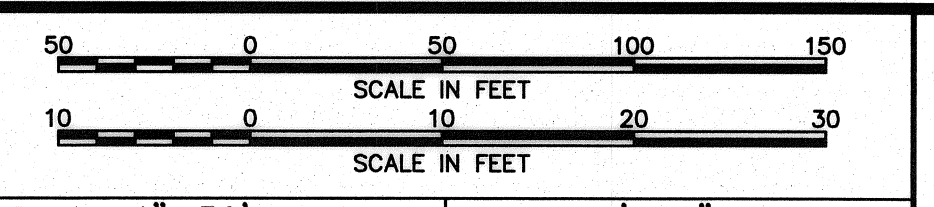


WORK ITEMS

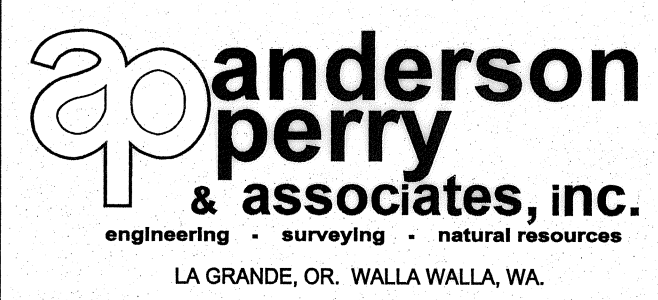
- (A) EXISTING IRRIGATION LINE ALONG OR CROSSING ALIGNMENT. EXACT LOCATION UNKNOWN. REMOVE AND PLUG AS REQUIRED FOR NEW LINE INSTALLATION.
- (B) EXISTING IRRIGATION CONTROL STRUCTURE TO BE REMOVED.
- (C) EXISTING IRRIGATION LINE ALONG ALIGNMENT TO BE ABANDONED. REMOVE AND PLUG AS REQUIRED FOR NEW LINE INSTALLATION.



| | | | |
|----------------------------|---|----------|------------|
| RECORD DRAWING | | BY: E.H. | DATE: 4/12 |
| DESIGNED BY: R. HARRIS | XREFS: TB-BID.dwg | | |
| DRAWN BY: E. ARNTZ | JOB NUMBER: 1199-336 | | |
| REVIEWED BY: J. HOLLOPETER | DATE: 2010 | | |
| | ACAD FILE: East_A.dwg | | |
| | COPYRIGHT 2010 BY ANDERSON-PERRY & ASSOC., INC. | | |



RECORD DRAWINGS
 These record drawings have been prepared, in part, on the basis of information compiled and furnished by others. They may contain some discrepancies and omissions, and do not necessarily represent "exact" field conditions. The Owner and the Engineer accept no responsibility for their accuracy.



BENTON IRRIGATION DISTRICT
 IRRIGATION SYSTEM IMPROVEMENTS
 PHASE 2A
 EAST - HORNE TO MASON PIPING
 STA. 0+90 TO STA. 15+00

SHEET
24