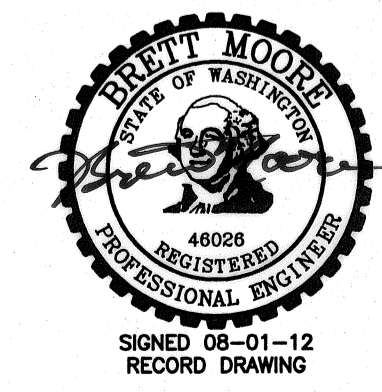
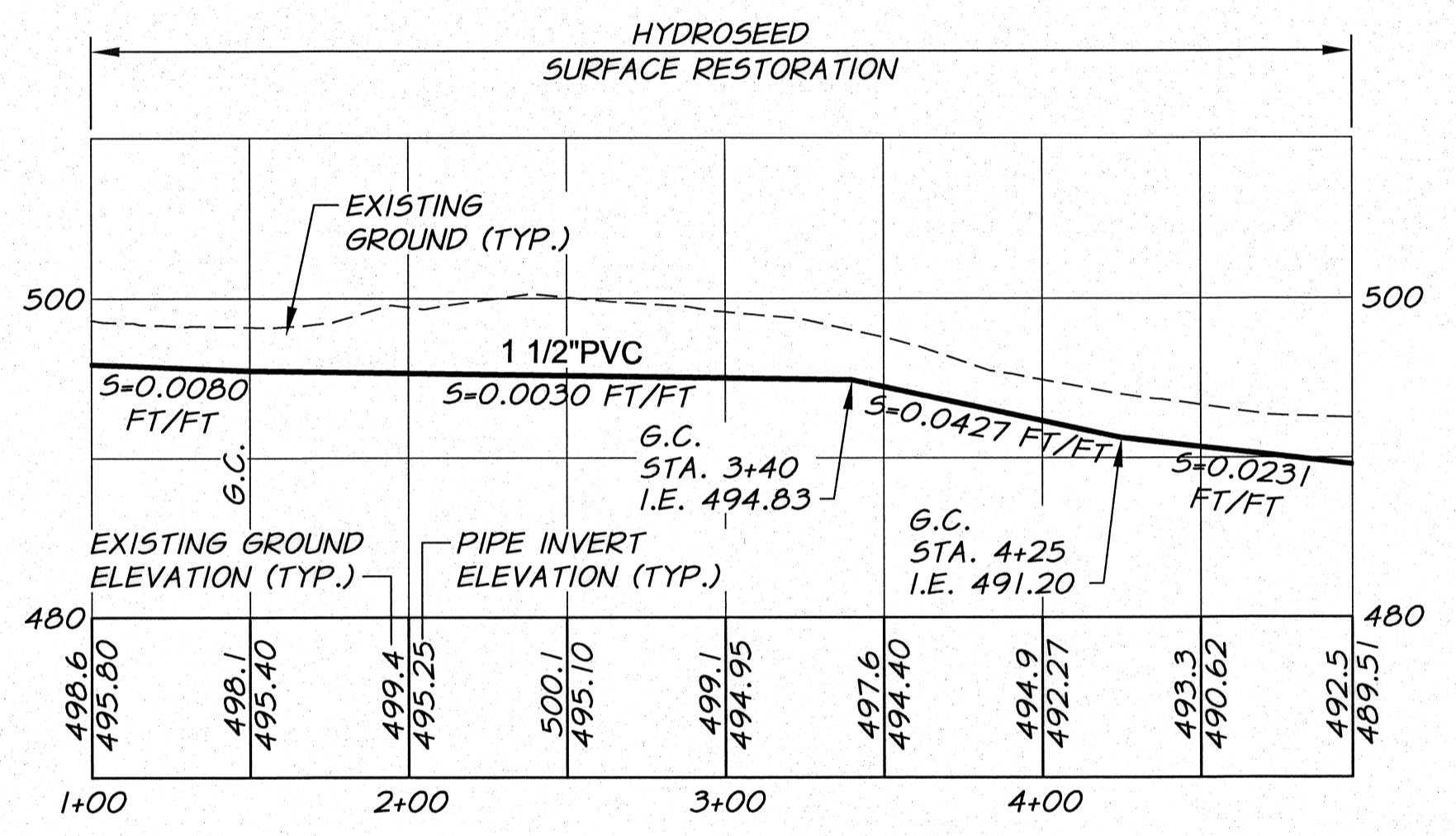
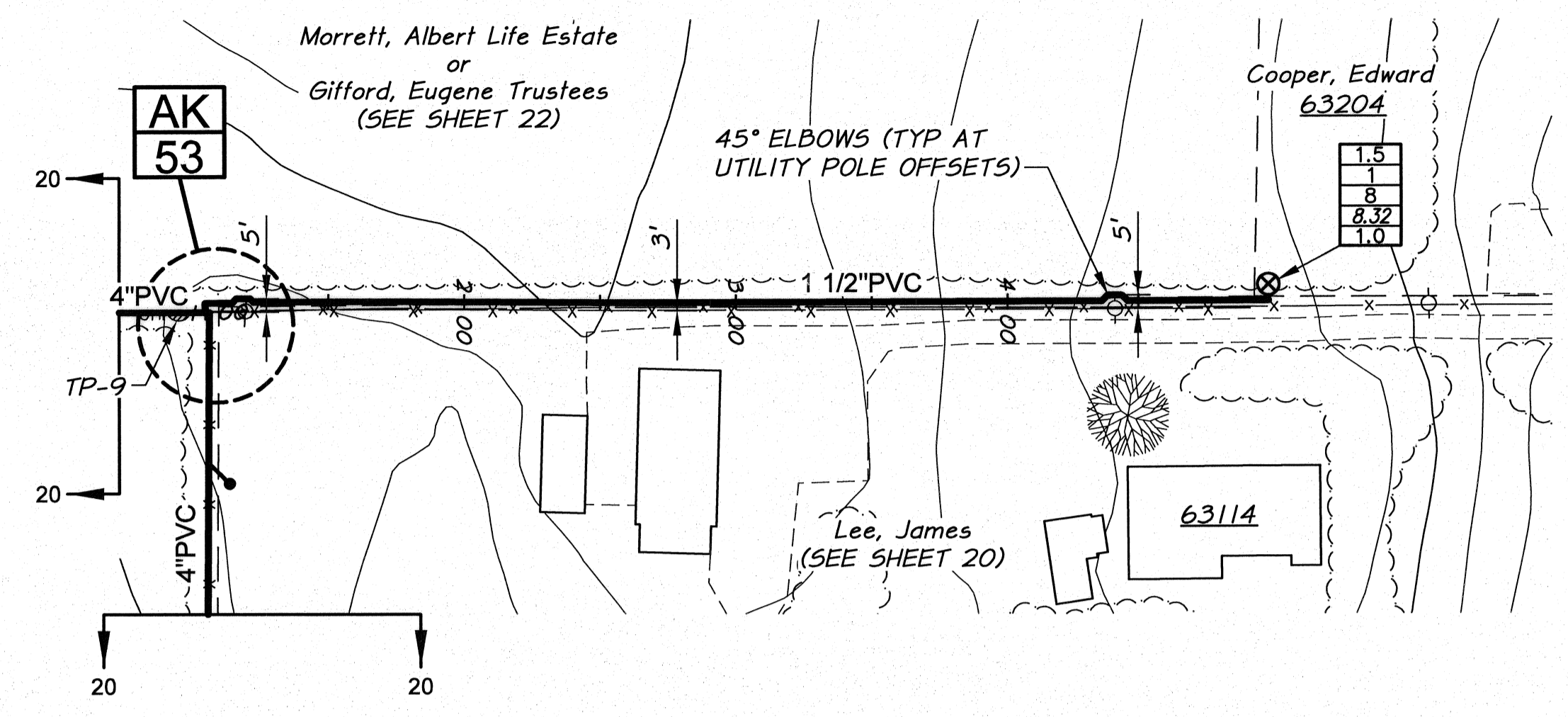


1" AIR/VAC VALVE. SEE DETAIL, SHEET 6.9.

NOTE:  
MAINTAIN 2.5' MIN. COVER AND GRADE TO DRAIN BACK TO MAIN LINE

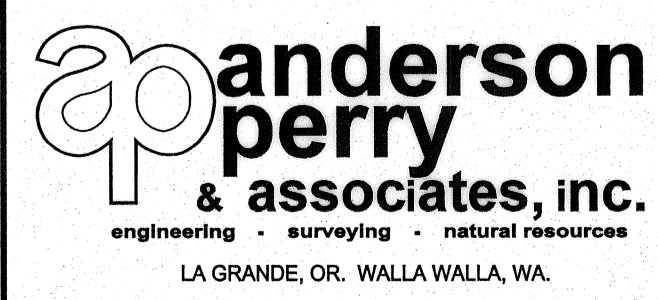
**WORK ITEMS**

- (C) EXISTING IRRIGATION LINE ALONG ALIGNMENT TO BE ABANDONED. REMOVE AND PLUG AS REQUIRED FOR NEW LINE INSTALLATION.



RECORD DRAWING		BY: E.H.	DATE: 4/12
DESIGNED BY: R. HARRIS	XREFS: TB-BID.dwg	JOB NUMBER: 1199-336	DATE: 2010
DRAWN BY: E. ARNTZ		ACAD FILE: North_East_B.dwg	
REVIEWED BY: J. HOLLOPETER		COPYRIGHT 2010 BY ANDERSON-PERRY & ASSOC., INC.	

**RECORD DRAWINGS**  
These record drawings have been prepared, in part, on the basis of information compiled and furnished by others. They may contain some discrepancies and omissions, and do not necessarily represent "exact" field conditions. The Owner and the Engineer accept no responsibility for their accuracy.



**BENTON IRRIGATION DISTRICT**  
IRRIGATION SYSTEM IMPROVEMENTS  
PHASE 2A  
NORTH EAST - HORNE TO HIGHLAND EXT. PIPING  
STA. 1+00 TO 4+35 (WEST) AND STA. 1+00 TO 4+90 (EAST)

SHEET  
**22**