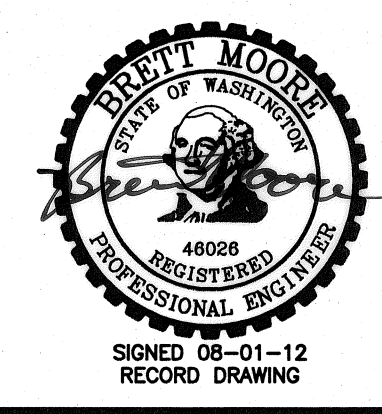
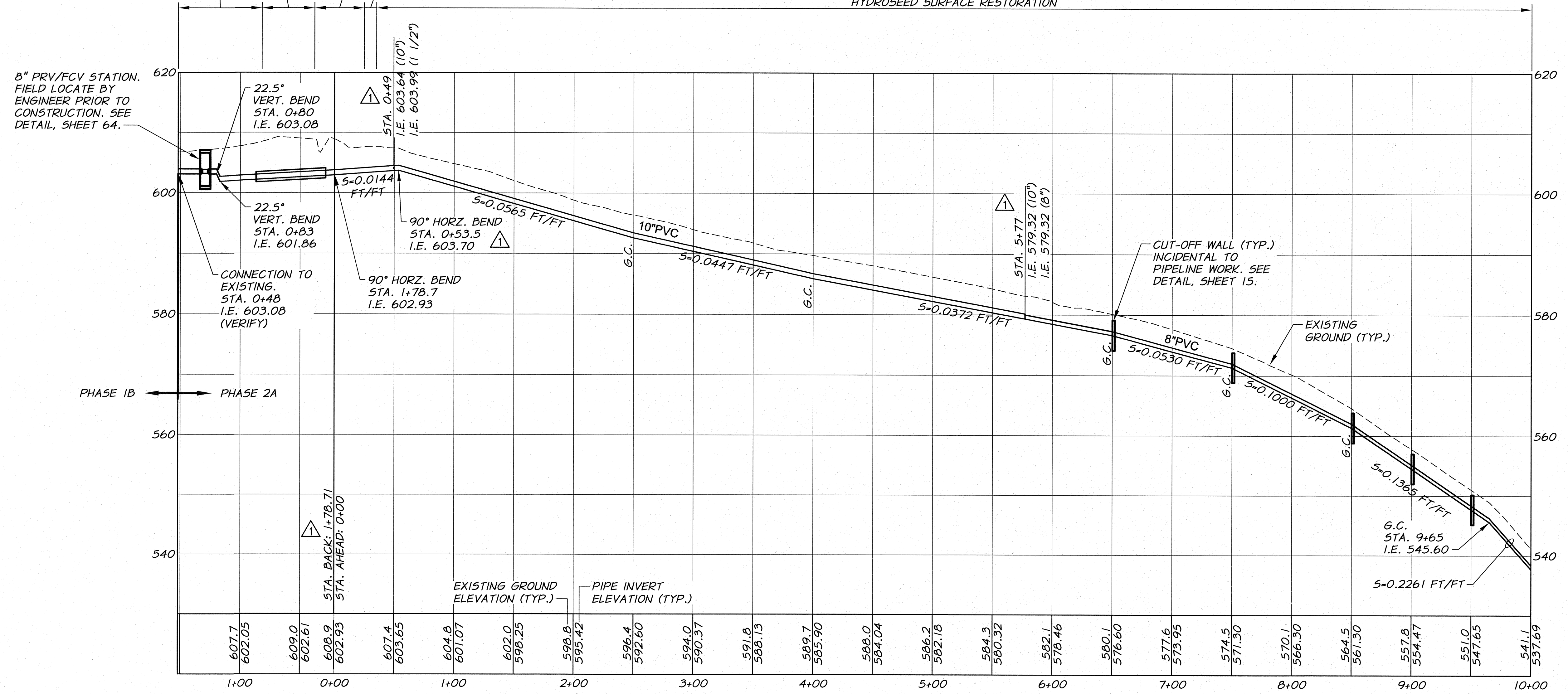


**WORK ITEMS**

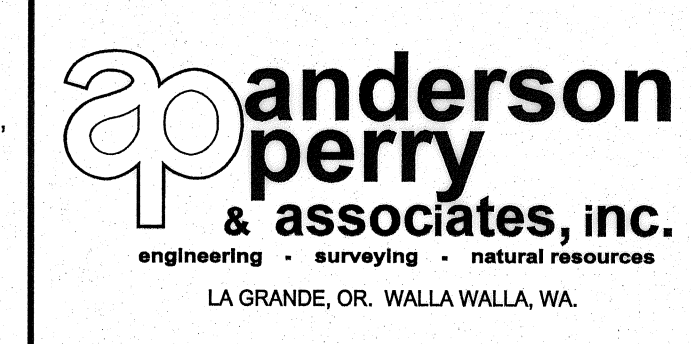
- (A) EXISTING IRRIGATION LINE ALONG OR CROSSING ALIGNMENT. EXACT LOCATION UNKNOWN. REMOVE AND PLUG AS REQUIRED FOR NEW LINE INSTALLATION.
- (B) EXISTING IRRIGATION CONTROL STRUCTURE TO BE REMOVED.

ASPHALT AND GRAVEL SURFACE RESTORATION  
 HYDROSEED SURFACE RESTORATION  
 GRAVEL SURFACE RESTORATION  
 HYDROSEED SURFACE RESTORATION



ADDENDUM NO. 1	R.H. 9/10	HORIZ. SCALE 1"=50'	VERT. SCALE 1"=10'
DESIGNED BY R. HARRIS	DATE 9/10	JOB NUMBER 1199-336	DATE 2010
DRAWN BY E. ARNTZ	ACAD FILE: North_East_B.dwg	COPYRIGHT 2010 BY ANDERSON-PERRY & ASSOC., INC.	
REVIEWED BY J. HOLLOPETER			

**RECORD DRAWINGS**  
 These record drawings have been prepared, in part, on the basis of information compiled and furnished by others. They may contain some discrepancies and omissions, and do not necessarily represent "exact" field conditions. The Owner and the Engineer accept no responsibility for their accuracy.



**BENTON IRRIGATION DISTRICT**  
 IRRIGATION SYSTEM IMPROVEMENTS  
 PHASE 2A  
 NORTH EAST - HORNE TO HIGHLAND EXT. PIPING  
 STA. 1+00 TO STA. 11+00