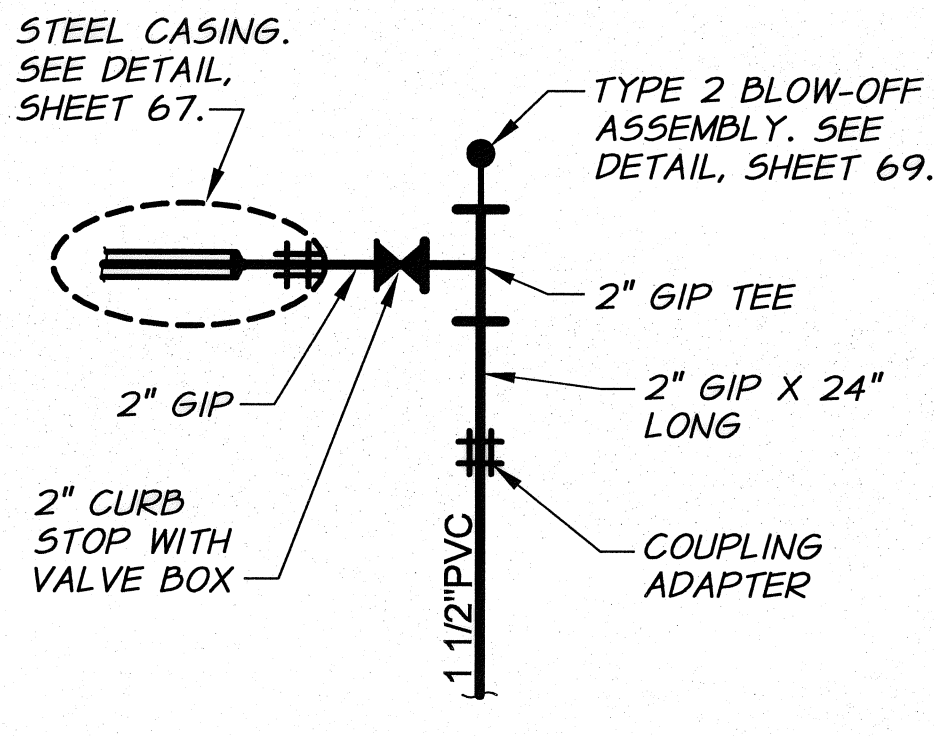
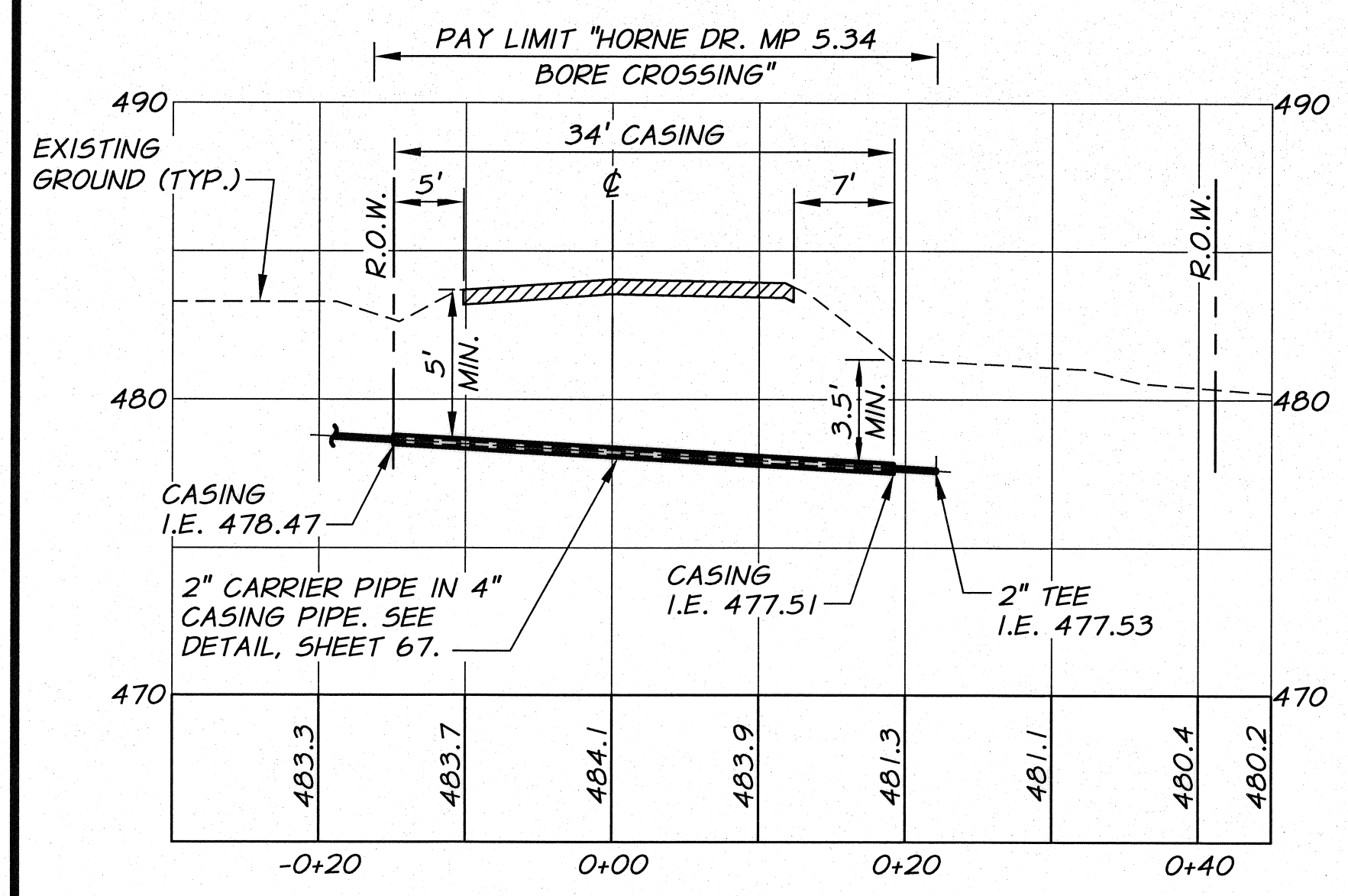


PLAN



DETAIL A
N.T.S.

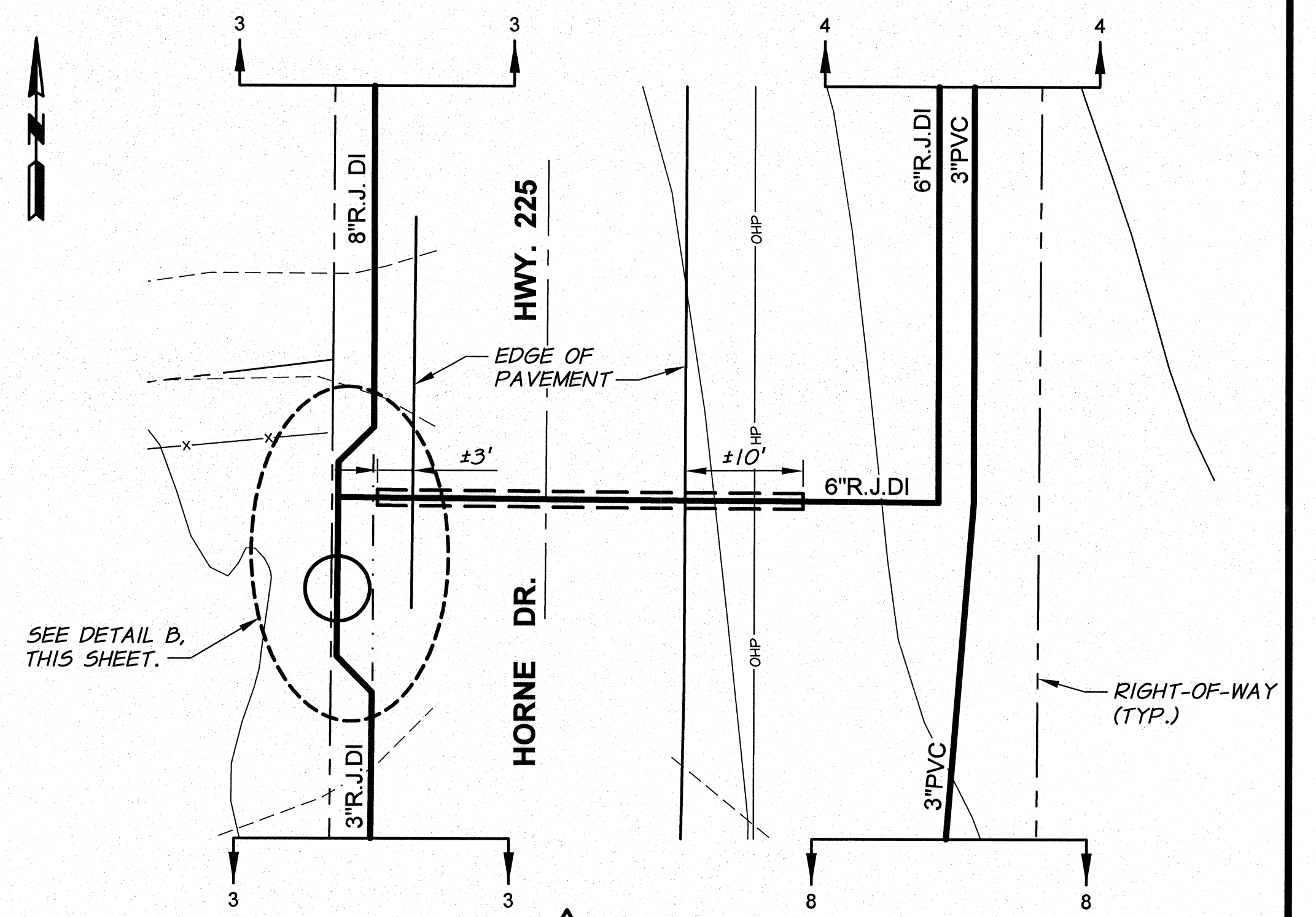


PROFILE

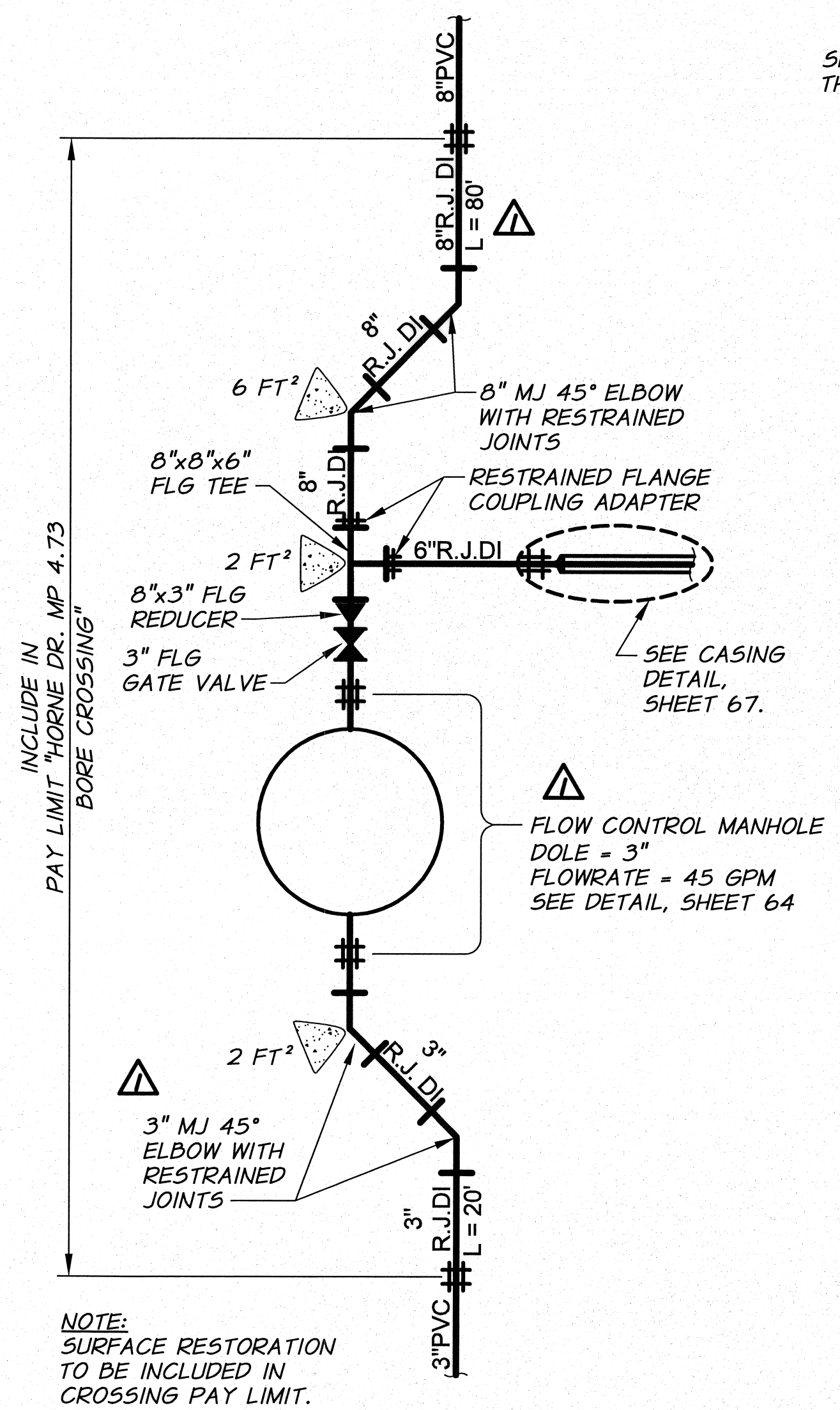
HORNE DR. MP 5.34 BORE CROSSING DETAIL

REF: SHEET 12
1"=10' HORZ.
1"=5' VERT.

NOTE:
SEE SHEET 67
FOR TYPICAL
CASING DETAILS.

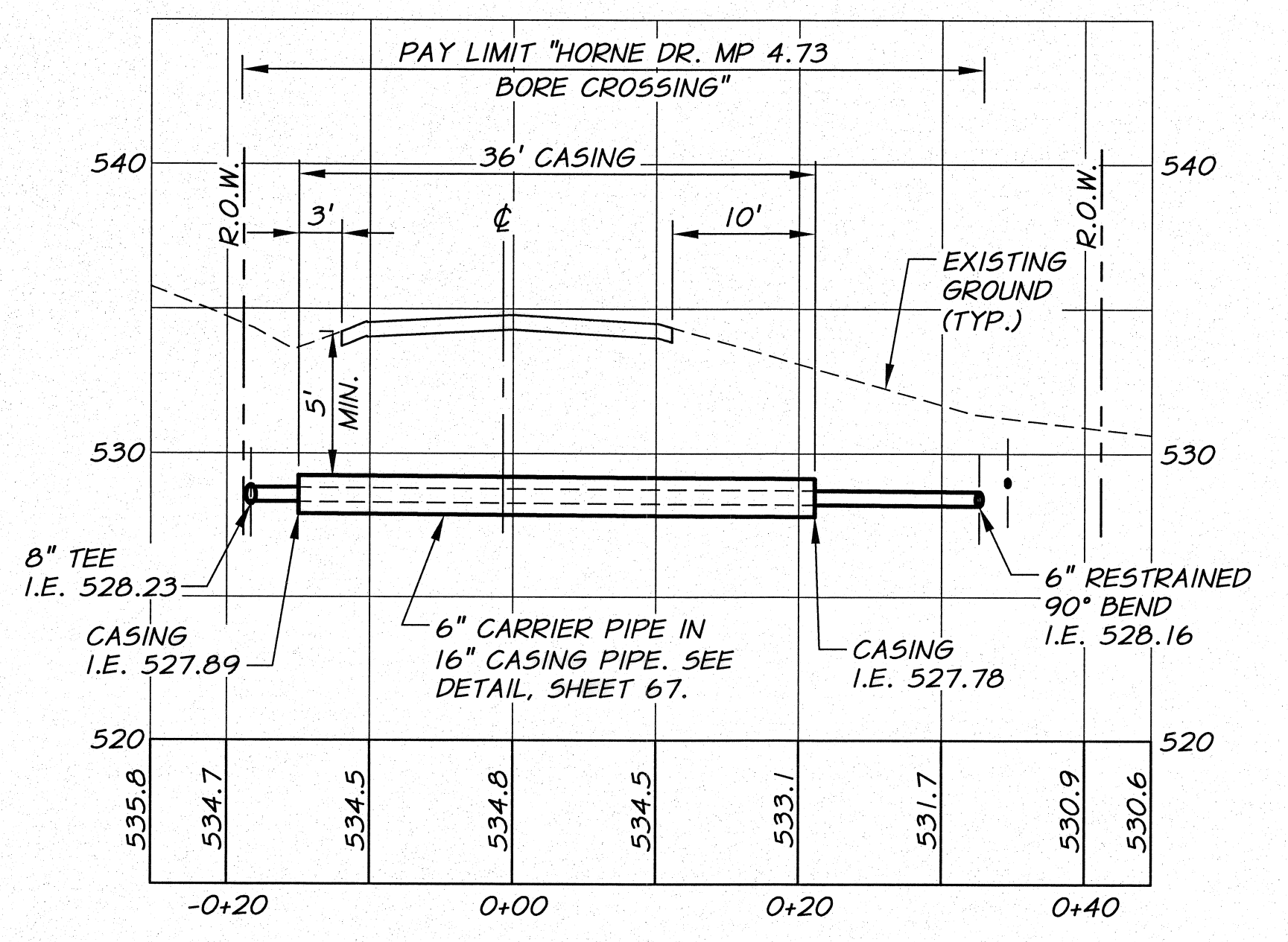


PLAN



DETAIL B
N.T.S.

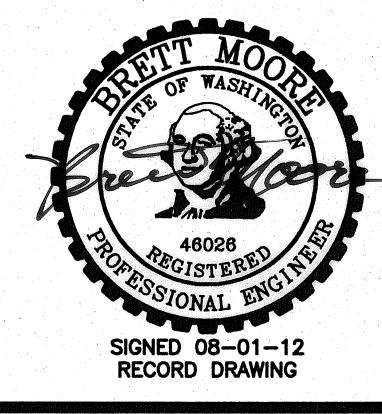
NOTE:
SURFACE RESTORATION
TO BE INCLUDED IN
CROSSING PAY LIMIT.



PROFILE

HORNE DR. MP 4.71 BORE CROSSING DETAIL

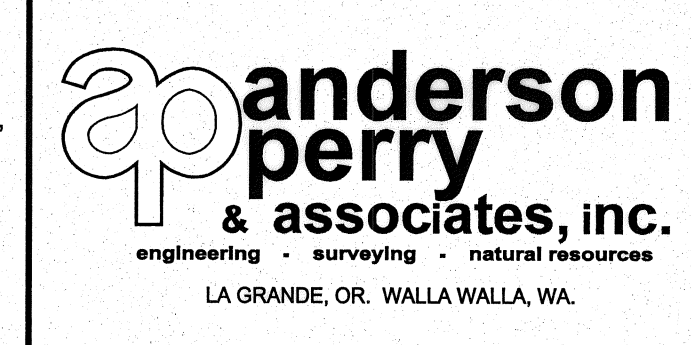
REF: SHEETS 3 AND 8
1"=10' HORZ.
1"=5' VERT.



RECORD DRAWING		E.H. 4/12		10 0 10 20 30 HORZ. SCALE IN FEET	
DESIGNED BY R. HARRIS		XREFS: TB-BID.dwg		5 0 5 10 15 VERT. SCALE IN FEET	
DRAWN BY D. CHRISTMAN		JOB NUMBER 1199-336		DATE 2010	
REVIEWED BY J. HOLLOPETER		ACAD FILE: HorneXingPNP.dwg		COPYRIGHT 2010 BY ANDERSON-PERRY & ASSOC., INC.	

RECORD DRAWINGS

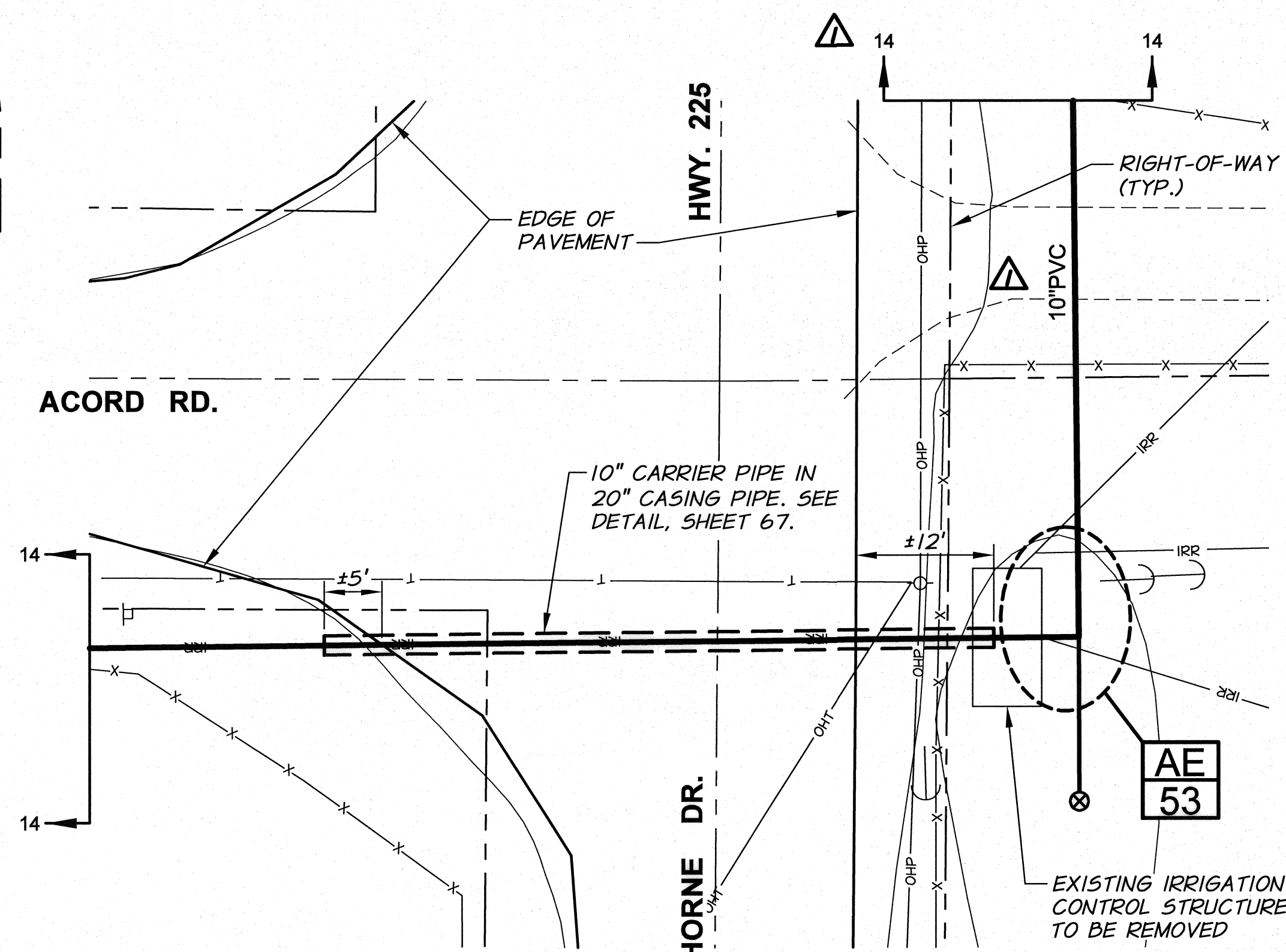
These record drawings have been prepared, in part, on the basis of information compiled and furnished by others. They may contain some discrepancies and omissions, and do not necessarily represent "exact" field conditions. The Owner and the Engineer accept no responsibility for their accuracy.



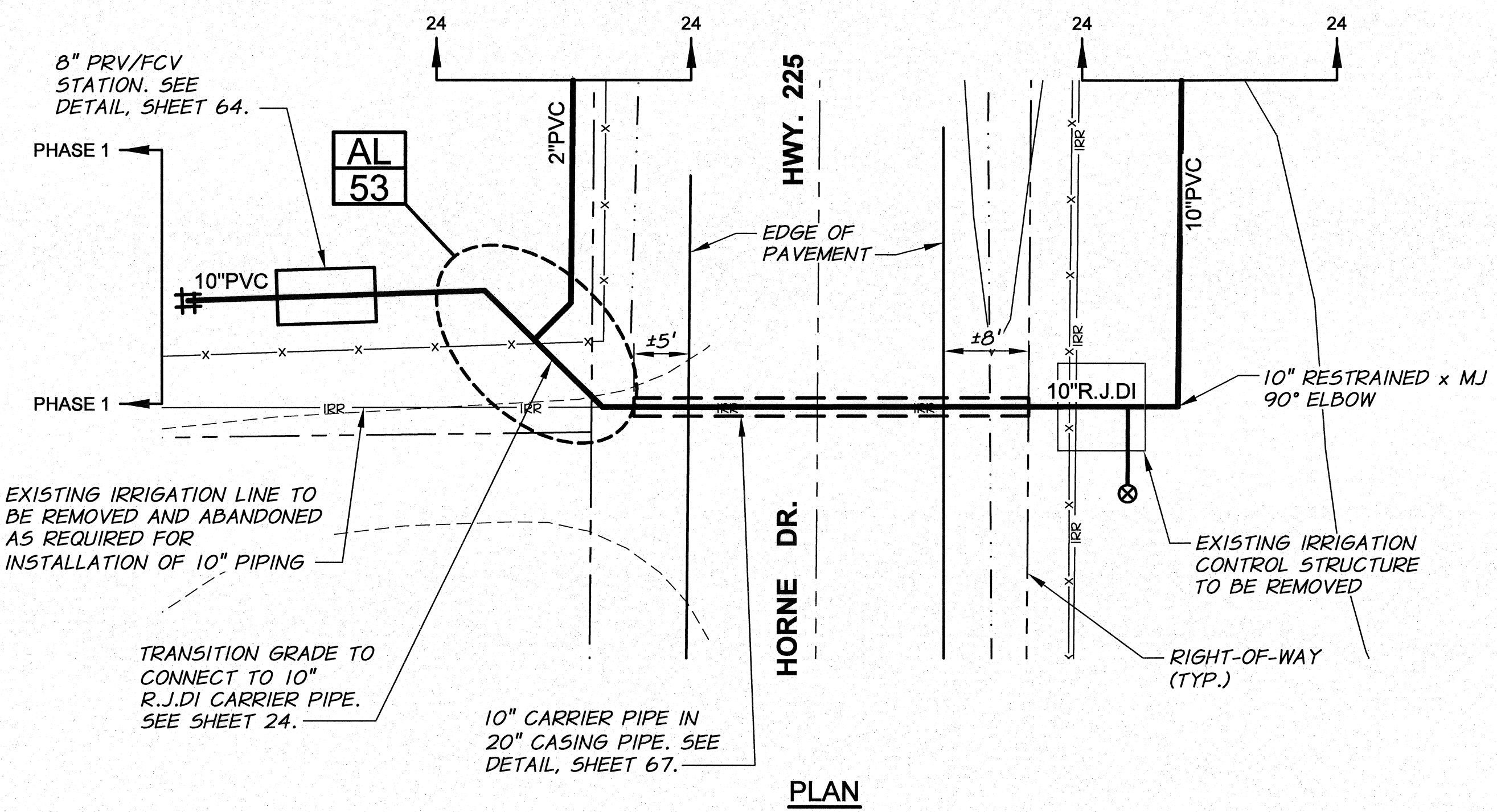
**BENTON IRRIGATION DISTRICT
IRRIGATION SYSTEM IMPROVEMENTS
PHASE 2A**

HORNE DR.-HWY 225 CROSSING DETAILS
MP 5.34 AND MP 4.73 - PLAN AND PROFILE

SHEET
65

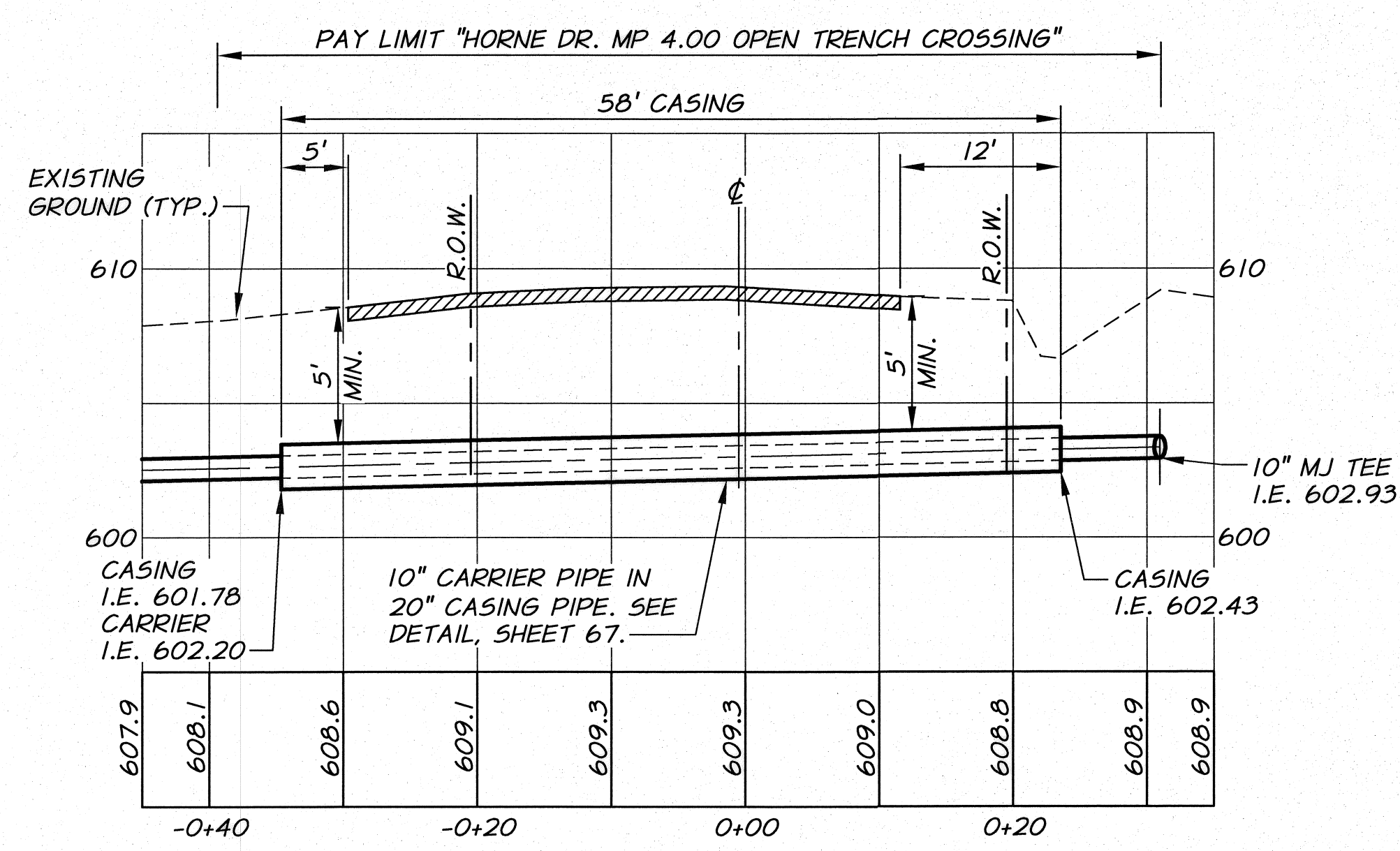


PLAN



PLAN

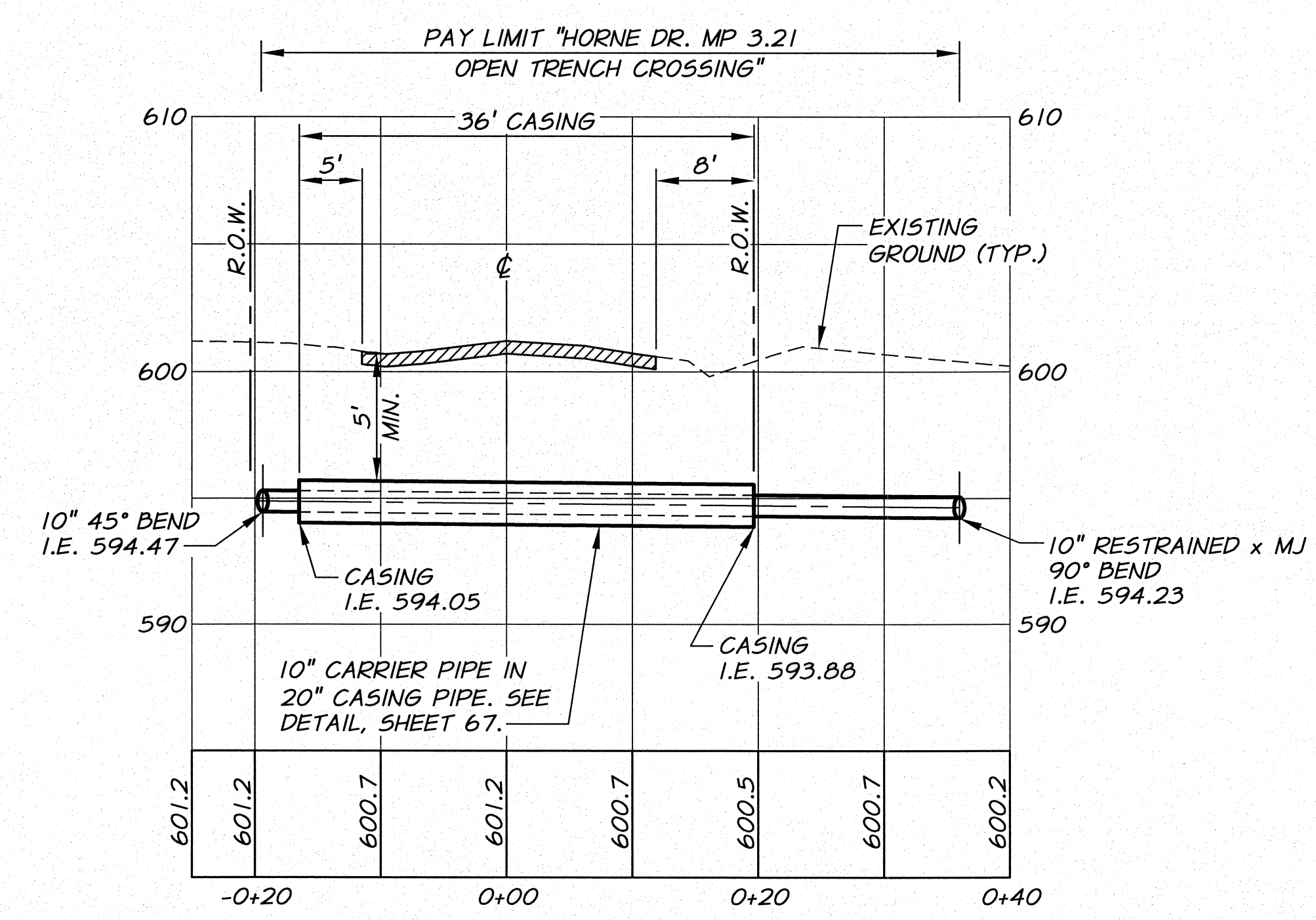
NOTE:
SURFACE RESTORATION
TO BE INCLUDED IN
CROSSING PAY LIMIT.



PROFILE

HORNE DR. MP 4.00 OPEN TRENCH CROSSING DETAIL

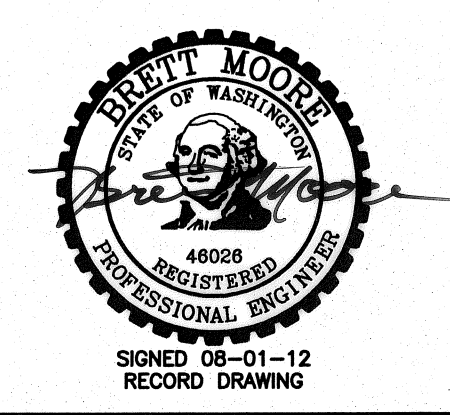
REF: SHEET 14
1"=10' HORZ.
1"=5' VERT.



PROFILE

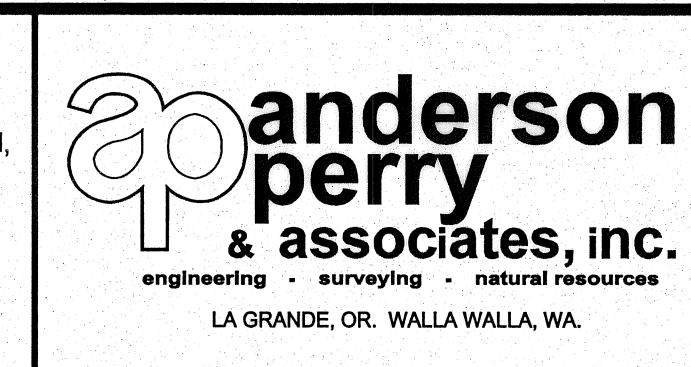
HORNE DR. MP 3.21 OPEN TRENCH CROSSING DETAIL

REF: SHEET 24
1"=10' HORZ.
1"=5' VERT.



RECORD DRAWING		E.H. 4/12		10 0 10 20 30 HORZ. SCALE IN FEET	
DESIGNED BY R. HARRIS	XREFS: TB-BID.dwg	DATE	4/12	5 0 5 10 15 VERT. SCALE IN FEET	
DRAWN BY D. CHRISTMAN		HORZ. SCALE	1"=10'	VERT. SCALE	1"=5'
REVIEWED BY J. HOLLOPETER		JOB NUMBER	1199-336	DATE	2010
		ACAD FILE	HorneXingPNP.dwg		
COPYRIGHT 2010 BY ANDERSON-PERRY & ASSOC., INC.					

RECORD DRAWINGS
These record drawings have been prepared, in part, on the basis of information compiled and furnished by others. They may contain some discrepancies and omissions, and do not necessarily represent "exact" field conditions. The Owner and the Engineer accept no responsibility for their accuracy.



BENTON IRRIGATION DISTRICT
IRRIGATION SYSTEM IMPROVEMENTS
PHASE 2A

HORNE DR.-HWY 225 CROSSING DETAILS
MP 4.00 AND MP 3.21 - PLAN AND PROFILE

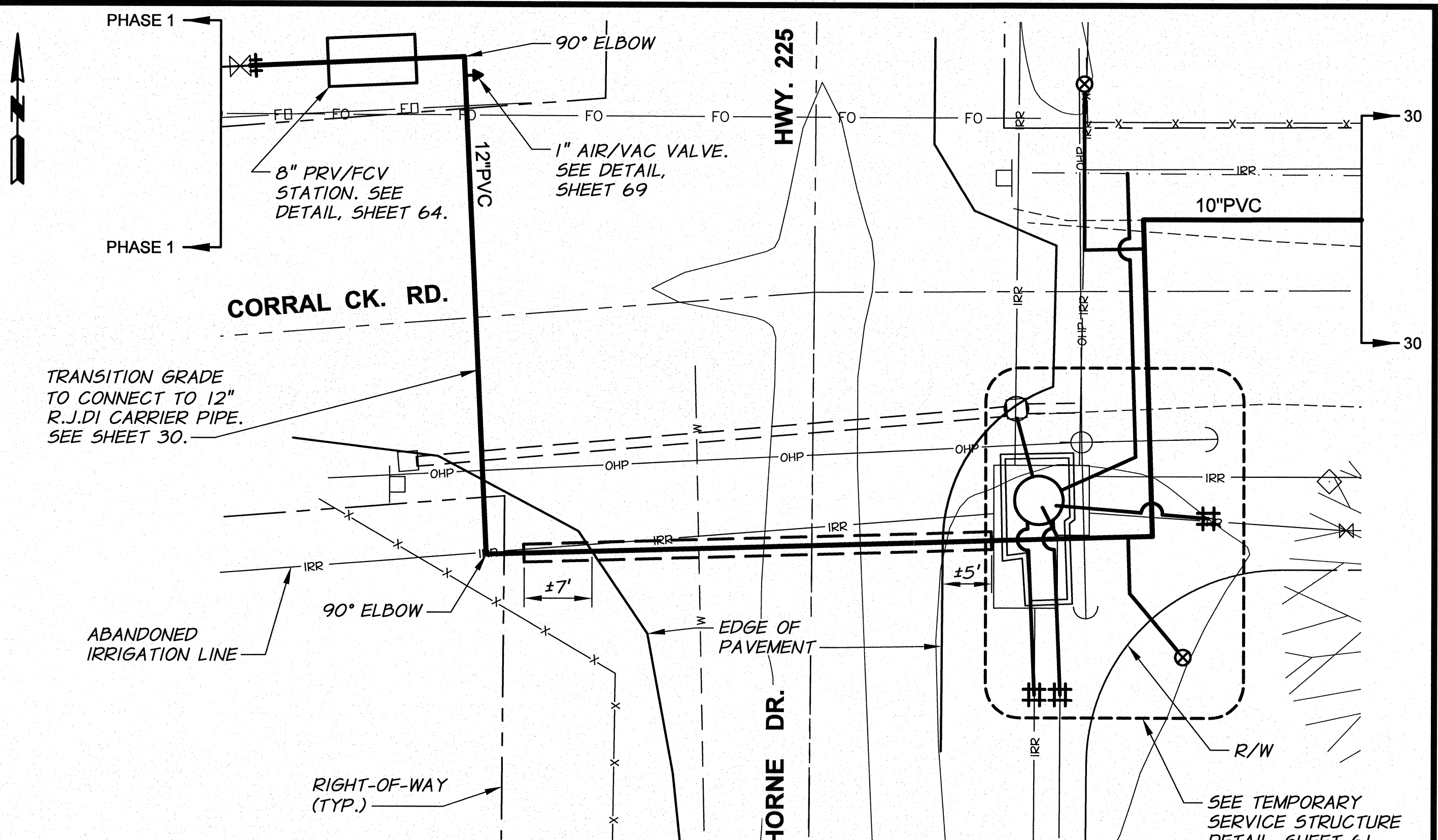
SHEET
66

ARCHIVED

NOTES:

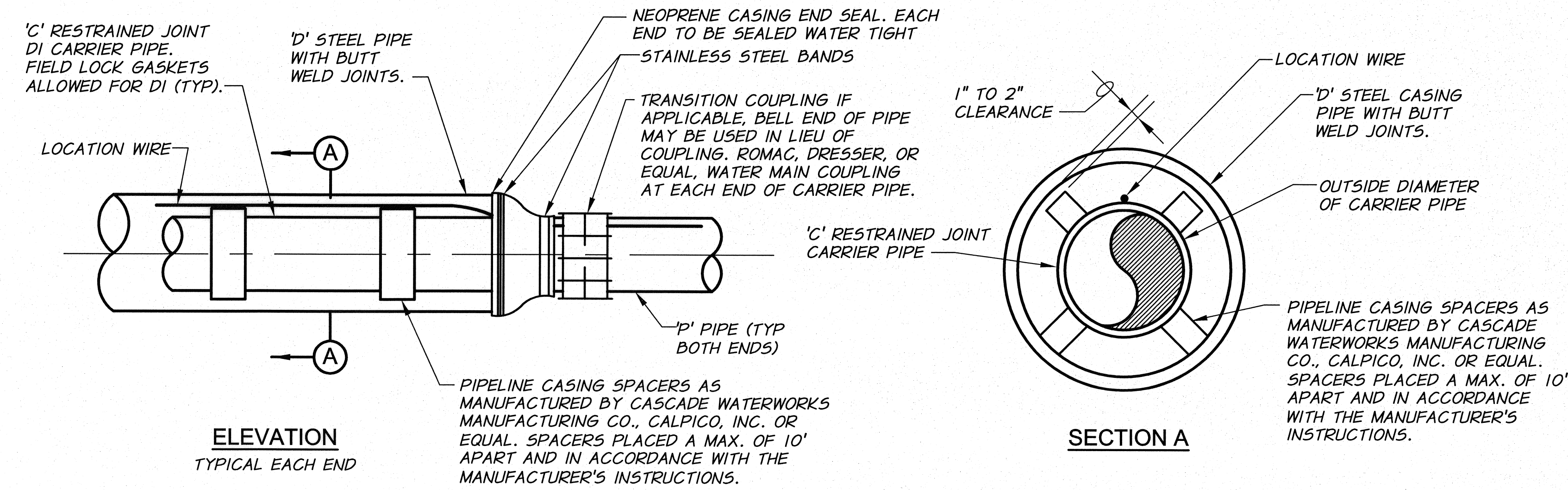
- CARRIER PIPE IN HIGHWAY 225 RIGHT-OF-WAY SHALL BE RESTRAINED JOINT DUCTILE IRON UNLESS STATED OTHERWISE.
- STEEL CASING SHALL HAVE A MINIMUM WALL THICKNESS OF 0.250" FOR 4" CASING AND 0.375" FOR CASING LARGER THAN 4".
- CASING PIPE SHALL BE SEALED WATERTIGHT AT BOTH ENDS.

CROSSING LOCATION	CARRIER PIPE 'C'	CASING PIPE SIZE 'D' X APPROX. LENGTH	IRRIGATION PIPE SIZE 'P'
MP 5.34	2" SCH 40 SOLVENT WELD PVC	4" X 34 FT.	2"
MP 4.73	6" R.J. DI	16" X 37 FT.	6"
MP 4.00	10" R.J. DI	20" X 58 FT.	10"
MP 3.21	10" R.J. DI	20" X 36 FT.	10"
MP 3.00	12" R.J. DI	22" X 48 FT.	12"



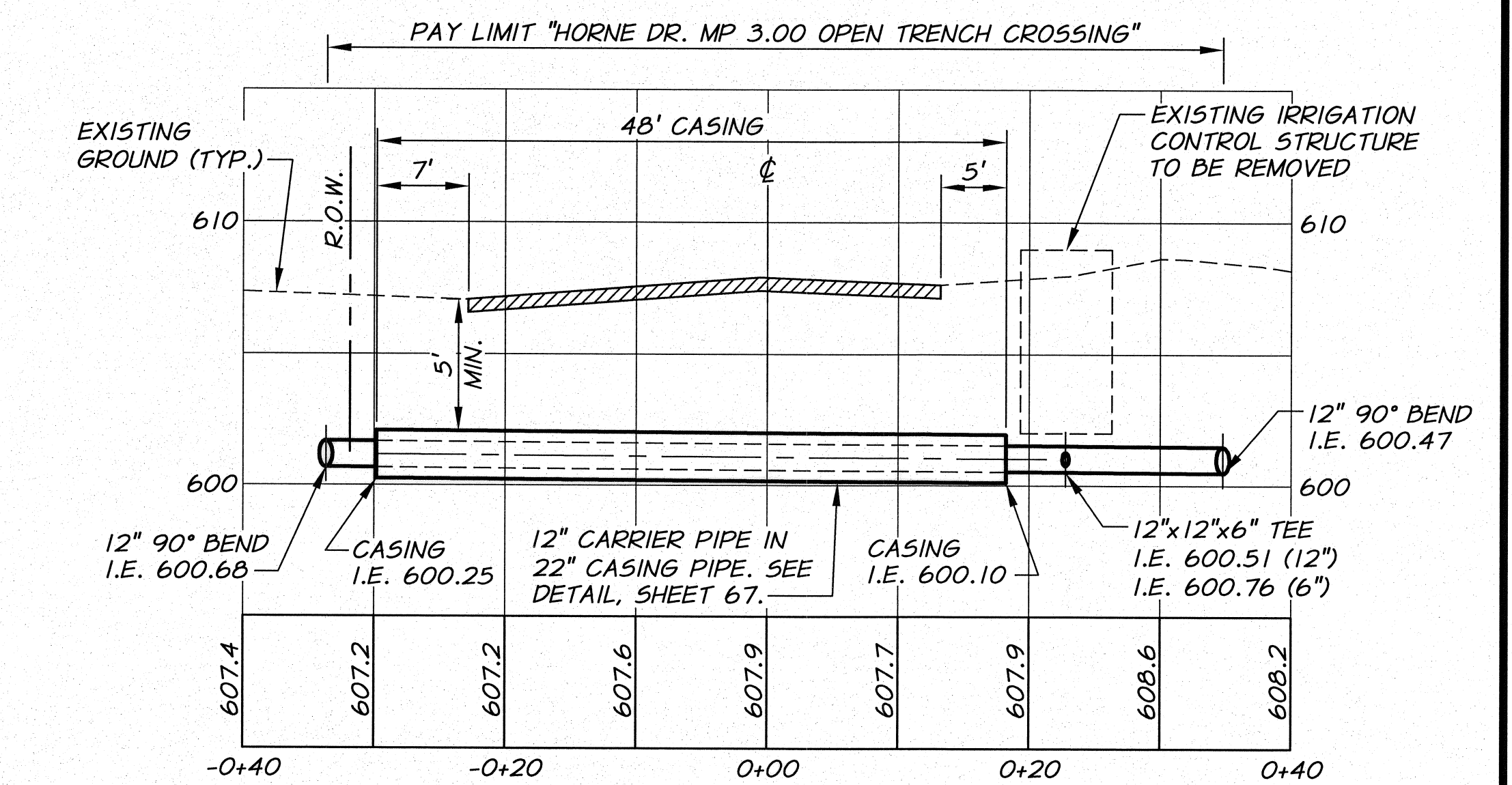
NOTE: SURFACE RESTORATION TO BE INCLUDED IN CROSSING PAY LIMIT.

PLAN



**CASING DETAIL
HORNE DR. CROSSINGS**

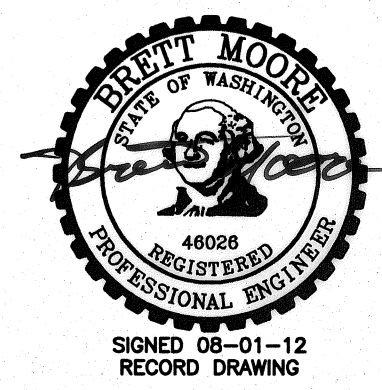
N.T.S.



PROFILE

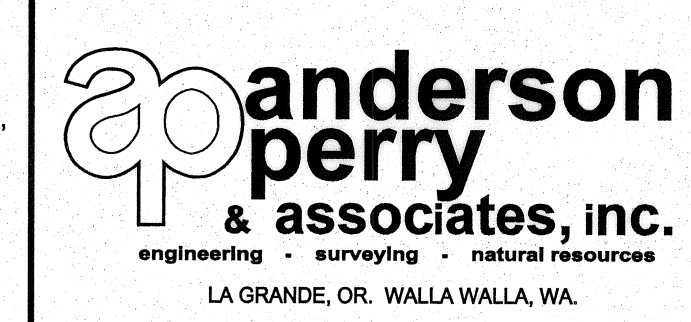
HORNE DR. MP 3.00 OPEN TRENCH CROSSING DETAIL

REF: SHEET 30
1"=10' HORIZ.
1"=5' VERT.



DESIGNED BY	R. HARRIS	XREFS:	TB-BID.dwg
DRAWN BY	D. CHRISTMAN	JOB NUMBER	1199-336
REVIEWED BY	J. HOLLOPETER	ACAD FILE:	HorneXingPNP.dwg
DATE		DATE	
		2010	
COPYRIGHT 2010 BY ANDERSON-PERRY & ASSOC., INC.			

RECORD DRAWINGS
These record drawings have been prepared, in part, on the basis of information compiled and furnished by others. They may contain some discrepancies and omissions, and do not necessarily represent "exact" field conditions. The Owner and the Engineer accept no responsibility for their accuracy.



BENTON IRRIGATION DISTRICT
IRRIGATION SYSTEM IMPROVEMENTS
PHASE 2A
HORNE DR.-HWY 225 CROSSING DETAILS
MP 3.00 - PLAN AND PROFILE

SHEET
67

ARCHIVED