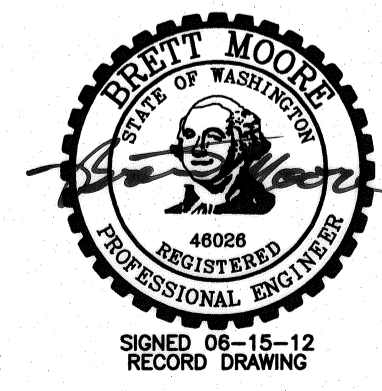
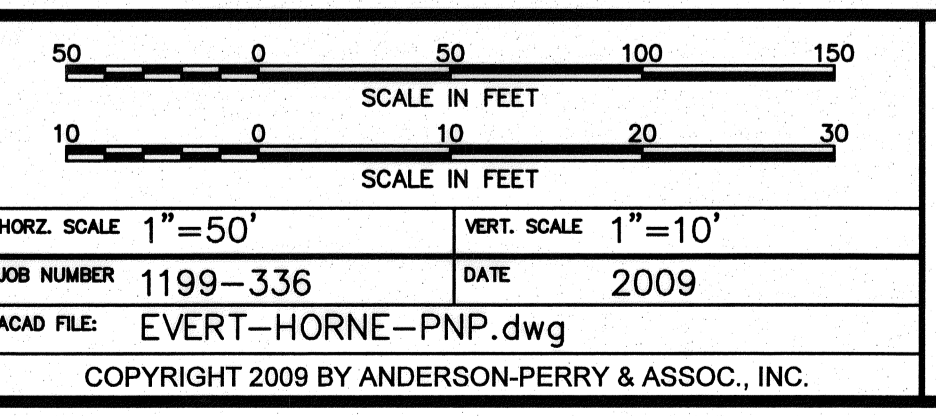


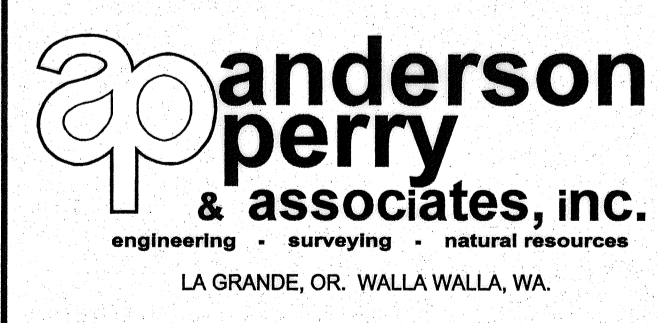
ADDITIVE ALTERNATIVE A - STA. 59+00 TO 60+00, STA. 63+00 TO 72+00  
 ADDITIVE ALTERNATIVE B - STA. 60+00 TO 63+00



<b>RECORD DRAWING</b>		BY	E.H.	DATE	12/11
DESIGNED BY	R. HARRIS	XREFS:	TB-BID.dwg		
DRAWN BY	R. RASMUSSEN	ACAD FILE:	EVERT-HORNE-PNP.dwg		
REVIEWED BY	H. PERRY	COPYRIGHT	2009 BY ANDERSON-PERRY & ASSOC., INC.		



**RECORD DRAWINGS**  
 These record drawings have been prepared, in part, on the basis of information compiled and furnished by others. They may contain some discrepancies and omissions, and do not necessarily represent "exact" field conditions. The Owner and the Engineer accept no responsibility for their accuracy.



**BENTON IRRIGATION DISTRICT**  
 IRRIGATION SYSTEM IMPROVEMENTS  
 PHASE I  
 EVERT ROAD TO HORNE ROAD PIPING  
 PLAN AND PROFILE - STA. 59+00 TO 72+00

SHEET  
**99**