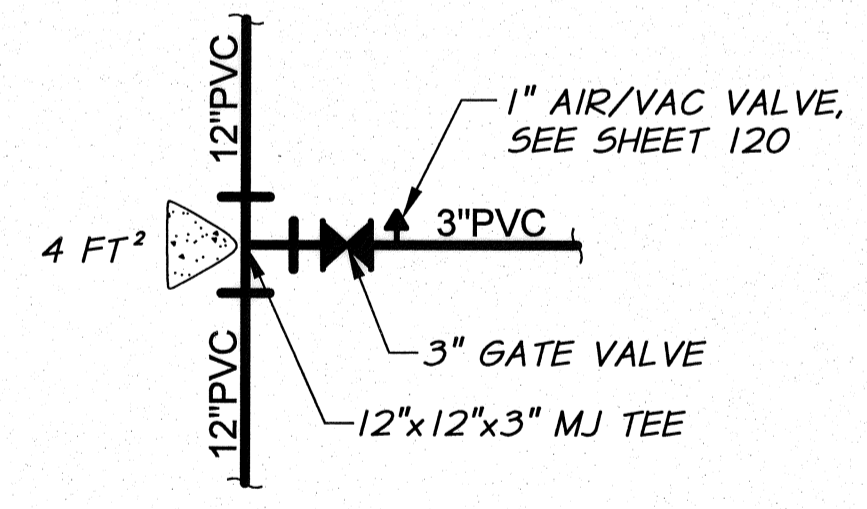
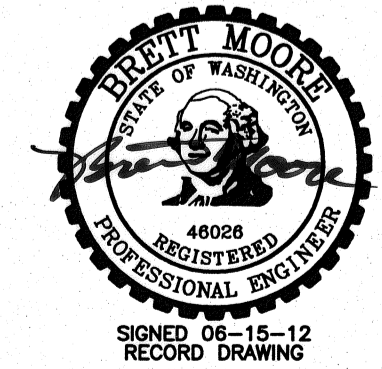


EXISTING IRRIGATION LINE TO BE ABANDONED WITH ADDITIVE ALTERNATIVE B. EXACT LOCATION UNKNOWN. REMOVE AND PLUG AS REQUIRED FOR NEW LINE INSTALLATION.

NOTE: PROVIDE 2.5' MIN. COVER. GRADE TO DRAIN AWAY FROM MAIN LINE.

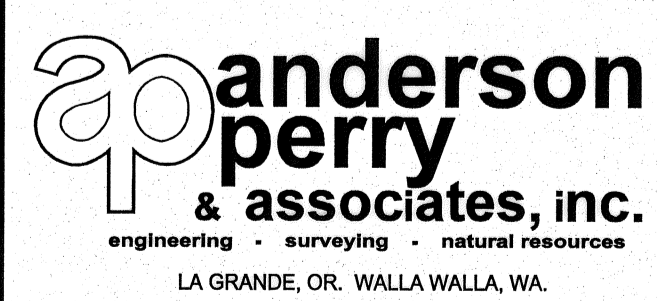


DETAIL
N.T.S.



ADDED SHEET		H.P.	5/10		
DESIGNED BY	R. HARRIS	BY	DATE	HORIZ. SCALE	1"=50'
DRAWN BY	R. RASMUSSEN	XREFS:	TB-BID.dwg	VERT. SCALE	1"=10'
REVIEWED BY	H. PERRY	JOB NUMBER	1199-336	DATE	2009
		ACAD FILE:	EVERT-HORNE-CHNG-PNP.dwg		
COPYRIGHT 2009 BY ANDERSON-PERRY & ASSOC., INC.					

RECORD DRAWINGS
These record drawings have been prepared, in part, on the basis of information compiled and furnished by others. They may contain some discrepancies and omissions, and do not necessarily represent "exact" field conditions. The Owner and the Engineer accept no responsibility for their accuracy.



BENTON IRRIGATION DISTRICT
IRRIGATION SYSTEM IMPROVEMENTS
PHASE I
EVERT ROAD TO HORNE ROAD PIPING
PLAN AND PROFILE - STA. 1+00 TO 7+55

SHEET
98A

ADDITIVE ALTERNATIVE B

ARCHIVED

C:\BENTON\101199_106_PRESSURE_PIPING\PIPING\PIPING\CHNG-PNP.dwg, 5/10, 6/22/2012 10:28:47 AM