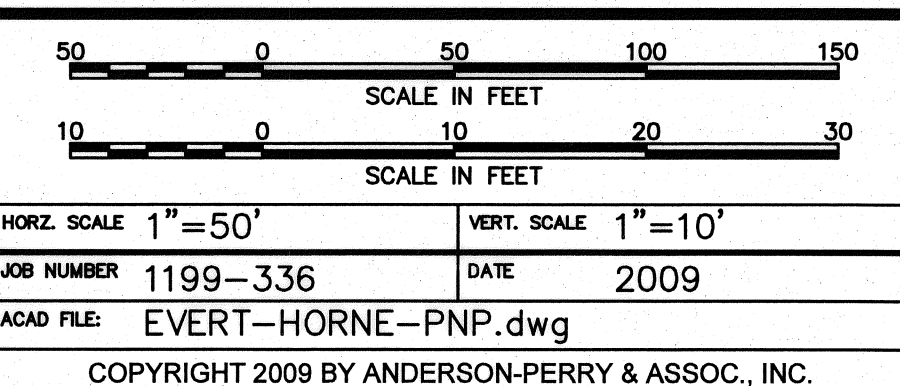
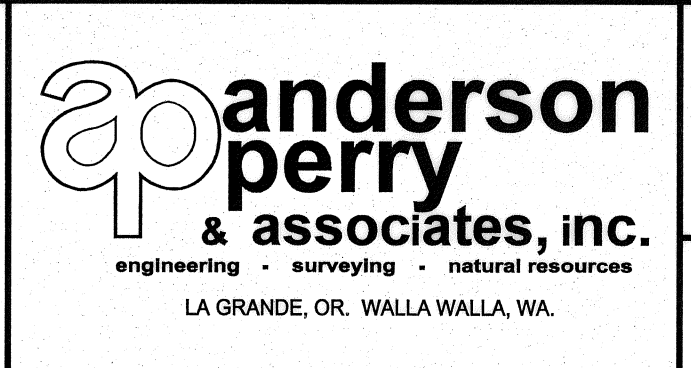


RECORD DRAWING		BY	E.H.	DATE	12/11
DESIGNED BY	R. HARRIS	XREFS:	TB-BID.dwg		
DRAWN BY	R. RASMUSSEN	JOB NUMBER	1199-336		
REVIEWED BY	H. PERRY	DATE	2009		
		ACAD FILE	EVERT-HORNE-PNP.dwg		
		COPYRIGHT 2009 BY ANDERSON-PERRY & ASSOC., INC.			



RECORD DRAWINGS
 These record drawings have been prepared, in part, on the basis of information compiled and furnished by others. They may contain some discrepancies and omissions, and do not necessarily represent "exact" field conditions. The Owner and the Engineer accept no responsibility for their accuracy.



BENTON IRRIGATION DISTRICT
 IRRIGATION SYSTEM IMPROVEMENTS
 PHASE I
 EVERT ROAD TO HORNE ROAD PIPING
 PLAN AND PROFILE - STA. 15+00 TO 30+00

ADDITIVE ALTERNATIVE B
 SHEET
96