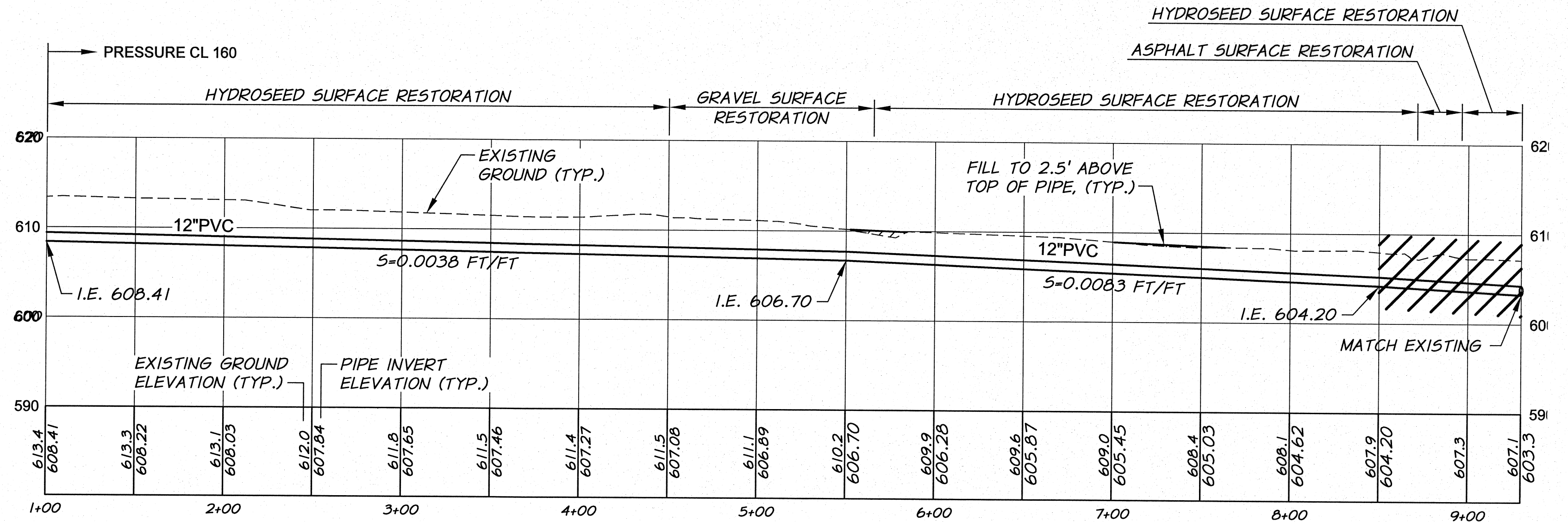
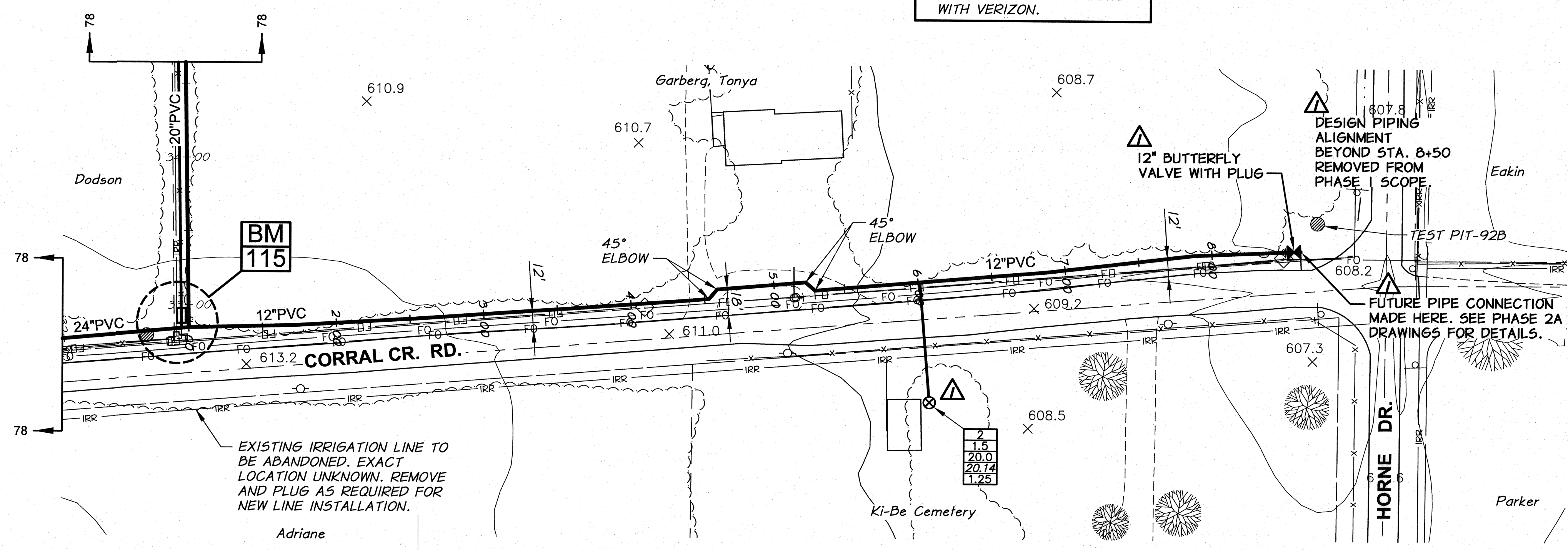
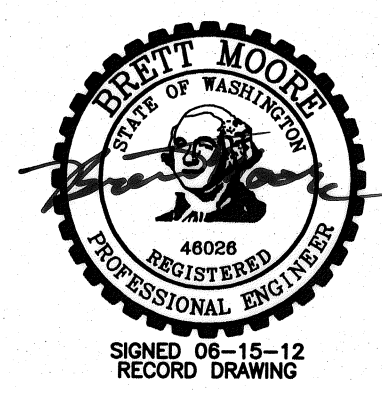


CAUTION
 FIBER OPTIC LINE ON
 NORTH SIDE OF CORRAL
 CREEK ROAD. COORDINATE
 WITH VERIZON.

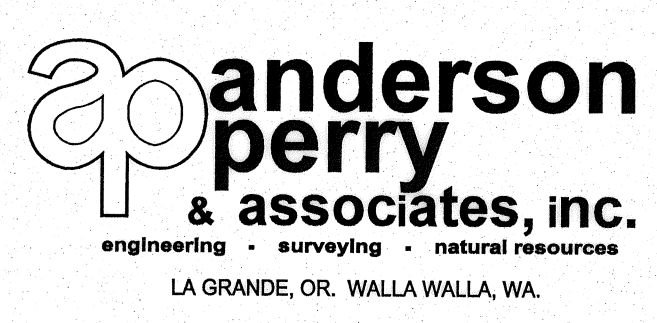


△ DESIGN PIPING ALIGNMENT BEYOND STA. 8+50 REMOVED FROM PHASE I SCOPE.



REVISION		BY	DATE	HORIZ. SCALE 1"=50'	VERT. SCALE 1"=10'
△ RECORD DRAWING		E.H.	12/11	1"=50'	1"=10'
DESIGNED BY	R. HARRIS	XREFS: TB-BID.dwg			
DRAWN BY	R. RASMUSSEN	JOB NUMBER	1199-336	DATE	2009
REVIEWED BY	H. PERRY	ACAD FILE:	HIGHLAND-ACCORD-SUBS.dwg	COPYRIGHT 2009 BY ANDERSON-PERRY & ASSOC., INC.	

RECORD DRAWINGS
 These record drawings have been prepared, in part, on the basis of information compiled and furnished by others. They may contain some discrepancies and omissions, and do not necessarily represent "exact" field conditions. The Owner and the Engineer accept no responsibility for their accuracy.



BENTON IRRIGATION DISTRICT
 IRRIGATION SYSTEM IMPROVEMENTS
 PHASE I
 HIGHLAND ROAD TO ACORD ROAD PIPING
 PLAN AND PROFILE - STA. 1+00 TO 9+30

ADDITIVE ALTERNATIVE B
 SHEET
92