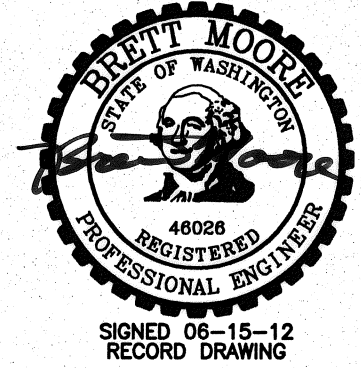
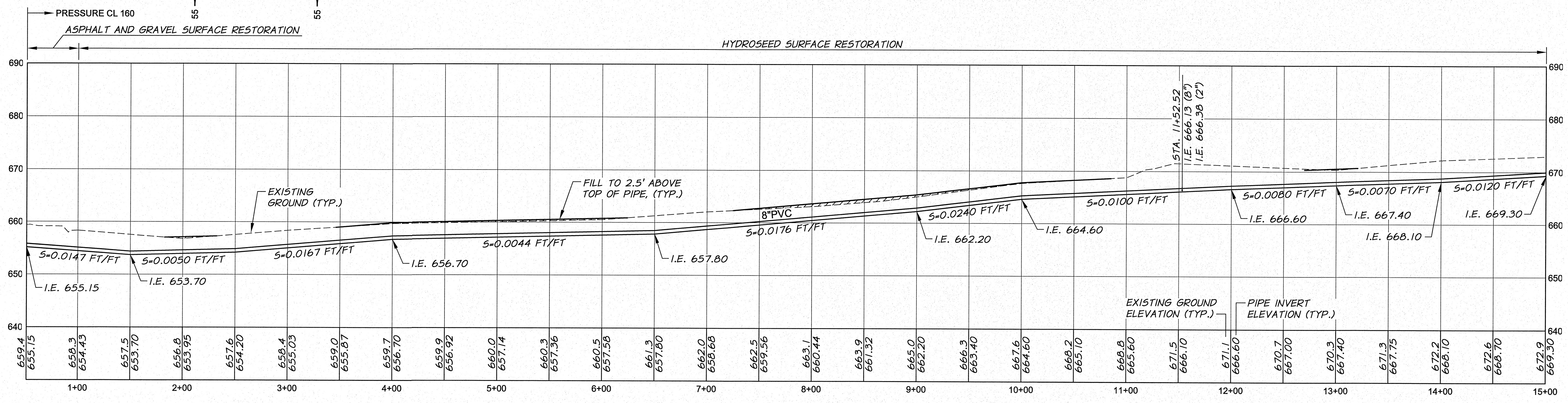
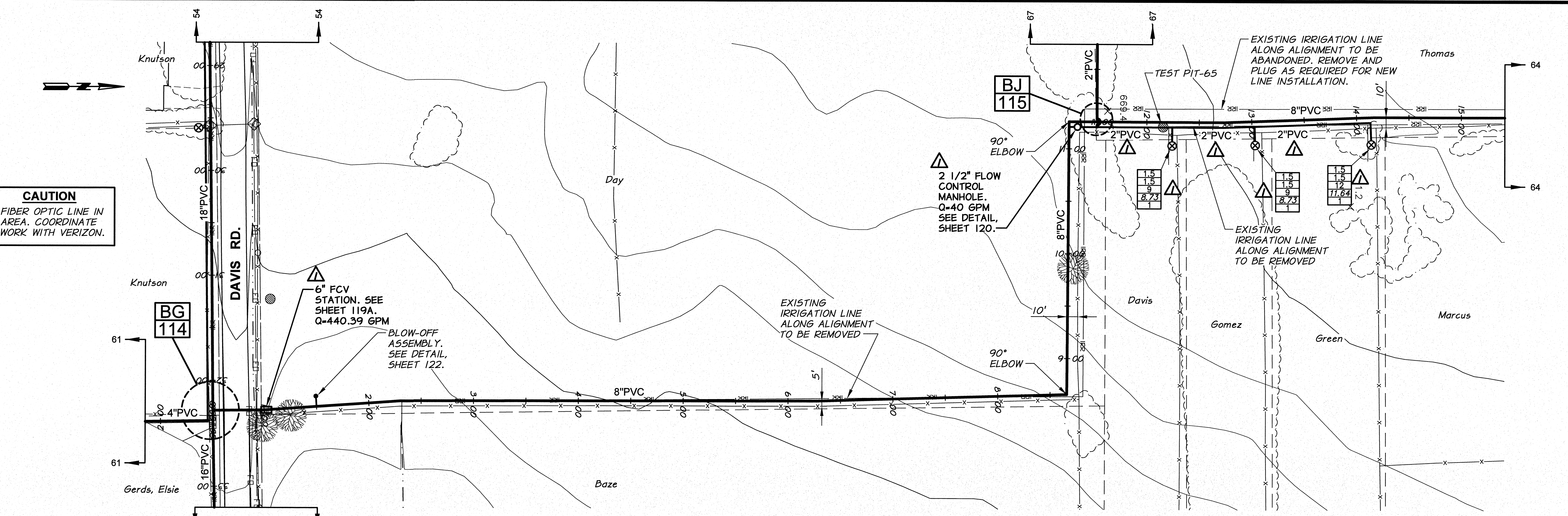
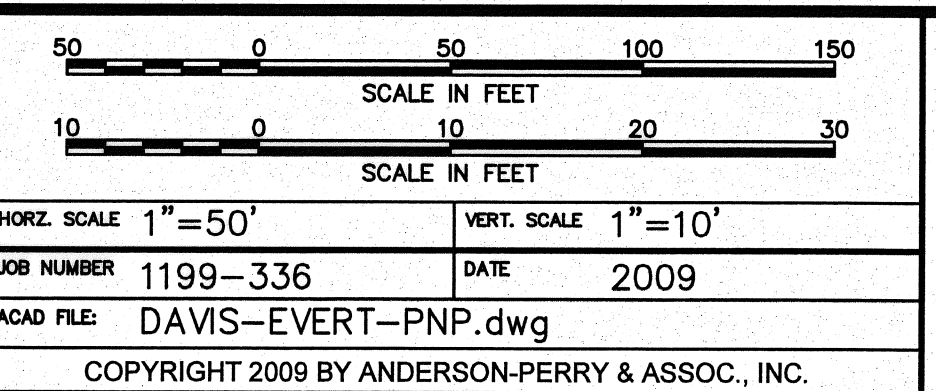


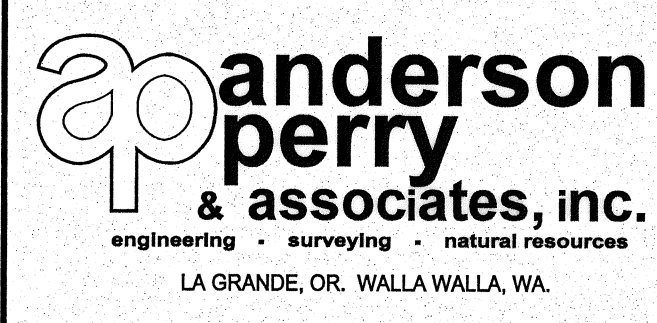
CAUTION
FIBER OPTIC LINE IN AREA. COORDINATE WORK WITH VERIZON.



RECORD DRAWING		BY	E.H.	DATE	12/11
DESIGNED BY	R. HARRIS	XREFS:	TB-BID.dwg		
DRAWN BY	R. RASMUSSEN	HORIZ. SCALE	1"=50'		
REVIEWED BY	H. PERRY	VERT. SCALE	1"=10'		
		JOB NUMBER	1199-336		
		DATE	2009		
		ACAD FILE	DAVIS-EVERT-PNP.dwg		
		COPYRIGHT	2009 BY ANDERSON-PERRY & ASSOC., INC.		



RECORD DRAWINGS
These record drawings have been prepared, in part, on the basis of information compiled and furnished by others. They may contain some discrepancies and omissions, and do not necessarily represent "exact" field conditions. The Owner and the Engineer accept no responsibility for their accuracy.



BENTON IRRIGATION DISTRICT
IRRIGATION SYSTEM IMPROVEMENTS
PHASE I
DAVIS ROAD TO EVERT ROAD PIPING
PLAN AND PROFILE - STA. 0+51 TO 15+00

ADDITIVE ALTERNATIVE B
SHEET
63